

# FY 2013-2014 Annual Report

*JULY 1, 2013 TO JUNE 30, 2014*



*Chris Lee, Executive Director  
Des Moines County Conservation  
13700 Washington Rd.  
West Burlington, IA 52655  
(319) 753-8260  
[www.dmcconservation.com](http://www.dmcconservation.com)*

*Des Moines County Conservation is dedicated to the sustainability of natural resources through land stewardship, conservation education, and by providing quality outdoor recreation opportunities.*

## Table of Contents

<b>TABLE OF CONTENTS .....</b>	<b>1</b>
<b>EXECUTIVE SUMMARY .....</b>	<b>2</b>
<b>YEAR AT A GLANCE .....</b>	<b>3</b>
<b>OUTDOOR RECREATION .....</b>	<b>4</b>
A BIG YEAR FOR BIG HOLLOW .....	4
TRAIL IMPROVEMENTS .....	5
NESTING BOX PROGRAM .....	6
MAINTENANCE .....	6
<b>CONSERVATION EDUCATION .....</b>	<b>8</b>
PROGRAMS .....	8
VOLUNTEERS .....	9
NATURE CENTER UPGRADES .....	9
PADDLING MADE POSSIBLE .....	10
<b>LAND STEWARDSHIP .....</b>	<b>11</b>
HABITAT IMPROVEMENT AWARD .....	11
STAFF CHANGE .....	11
<b>ADMINISTRATION .....</b>	<b>12</b>
PROFESSIONAL DEVELOPMENT .....	13
PROFESSIONAL SERVICE .....	13
VALUE OF COUNTY PARKS .....	14
<b>FACTS AND FIGURES .....</b>	<b>15</b>
BIG HOLLOW SHOOTING RANGE .....	15
CAMPING .....	16
CONSERVATION EDUCATION .....	17
FINANCIAL STATEMENT .....	20
<b>ORGANIZATIONAL CHART .....</b>	<b>24</b>
<b>EMPLOYEE DIRECTORY .....</b>	<b>25</b>
<b>BOARD MEMBER DIRECTORY .....</b>	<b>26</b>
<b>CONSERVATION BOARD MEETINGS .....</b>	<b>26</b>

## Executive Summary

By virtually all measures, fiscal year 2013-2014 was what most people would call a “success.” Environmental Education staff delivered more programs to more participants than ever before; 15,243 people attended 318 programs delivered by Des Moines County Conservation throughout the year. That’s an average of over six programs delivered to more than 293 people PER WEEK year-round.

More people camped in Des Moines County parks than in any year prior. Over 3,400 people camped in Des Moines County parks this year. That’s a 118% increase in the number of people camping. While every campground in the county saw some increase in camper numbers, Big Hollow Recreation Area saw the largest increase (320%) thanks to the addition of water and electric services to the new RV campground.

It’s clear that even casual visitation to DMCC parks has increased. A traffic count at Big Hollow found that between April 28 and June 5, 2014, just shy of 6,000 vehicles entered and exited the park. Visitation to Starr’s Cave Nature Center set a new record as well, exceeding the previous visitation record by nearly 25%.

More visitors mean a greater economic impact. We estimate that visitors to Des Moines County Conservation’s main parks contribute over \$2 million annually to the local economy through direct spending. That doesn’t take into account any spending generated from the department’s other, less-developed passive or day use areas such as Hunt Woods, Luckenbill Woods, Hickory Bend Conservation Area or any of the four Mississippi River accesses.

While the numbers are important – and also impressive – they’re not the driving force behind our efforts nor are they our only true measure of success. Our successes are written on the landscape, on the face of every child experiencing that “Wow!” moment of nature discovery, in the smoky Dutch ovens of every camper enjoying a weekend outdoors. Sure, we want to afford those experiences to as many people as possible but not if the quality of the experience is diminished.

So rest assured that as we move forward, we’ll work diligently to care for the land and to provide great places go enjoy and learn about the outdoors. If we generate a couple million bucks for the community in the process, all the better.

See you outside,



Chris Lee, Executive Director  
Des Moines County Conservation

## YEAR AT A GLANCE

Big Hollow Recreation Area saw significant improvements:

- The primitive cabin was finished and opened for rentals.
- The remainder of the campsites in the RV campground had electricity installed.
- A new registration and information kiosk was installed along with a water hydrant with which to fill campers upon arrival to the park.
- As a result, Big Hollow saw a 320% increase in the number of campers over last fiscal year.
- A traffic count revealed that an average of nearly 150 vehicles per day visit the park in the summer months.

Environmental education efforts set all new records this year; 318 educational programs were offered throughout the year to 15,243 participants. That's 81 more programs (+34%) and 5,023 more participants (+49%) than last fiscal year. Over the course of the fiscal year, 10,623 people visited the nature center, 3,374 more than last year (+47%).

Tracy Timmerman was recognized at the 2013 Volunteer of the Year and Rose's Bait and Tackle was recognized as the 2013 Volunteer Group of the Year.

The first segment of the Flint River Trail officially opened to the public.

3,476 people camped in DMCC campgrounds.

Des Moines County Conservation received a Habitat Improvement Award from the Izaak Walton League of America "for outstanding efforts in establishing habitat for wildlife."

DMCC secured over \$225,000 in grants this year. Most of the actual expenditures from those grants will take place in subsequent years.

## Outdoor Recreation

Des Moines County Conservation staff and volunteers work tirelessly to keep the county's parks and conservation areas maintained and open to the public. In addition to the regular maintenance required, they often take on additional projects to improve, enhance, or expand outdoor recreation opportunities for the public. Some of those projects are highlighted here.

### A big year for Big Hollow



Building on the momentum from last year, Des Moines County Conservation completed several major projects at Big Hollow Recreation Area. Though there's still more improvements on the way, there's much more at Big Hollow today than there was just one year ago.

- **Primitive Cabin** – The long-awaited cabin at Big Hollow was completed and opened for public rentals in April 2014. Reservations came quickly and by early summer, the cabin had been reserved for every weekend through August and most of September. From April 1<sup>st</sup> through the end of the fiscal year (June 30), the cabin had been rented for 43 nights including nearly every available weekend. The primitive cabin has no water or electricity and rents for \$25/night with a two-night minimum.



- **Big Hollow RV Campground** – The second half of the electric service was installed at the Big Hollow RV campground at the end of the 2013 camping season. A water hydrant and registration station was installed in early 2014 making the campground fully functional. As a result, Big Hollow experienced a 320% increase in the number of people camping

## Mission Statement

“Des Moines County Conservation is dedicated to the sustainability of natural resources through land stewardship, conservation education, and by providing quality **outdoor recreation** opportunities.”

at the park over last year. Though many campers would like to see a dump station and shower house (both coming soon, once funding is available), it is not uncommon for staff to hear positive comments about the campground. Campers really appreciate the space between each campsite, the double occupancy sites for family groups and the overall layout of the campground.

- **Big Hollow Lake** – Whether it's a visit to the beach or a day spent fishing, Big Hollow Lake continues to be immensely popular. The crappie fishing was slow this year but the bluegill have reached impressive sizes and, along with the voracious bass in the lake, fishing at Big Hollow Lake is good throughout the spring and summer months. Staff installed a fish cleaning station at the boat ramp during the summer of 2014. The station was made possible by donations from the Gerald Rogge Memorial, Randy Kitsch & Steve Dehague Memorial Fishing Tournament, John Vose Memorial and Dean Wilson Memorial.
- **Traffic Count** – Des Moines County Conservation partnered with Southeast Iowa Regional Planning Commission (SEIRPC) in spring of 2014 to measure the traffic volume going in and out of Big Hollow. A traffic counter was installed at the park's entrance on April 28, 2014 and counted traffic into and out of the park until June 5, 2014. In that time, the following data was collected:
  - 5,956 total vehicle trips to park (vehicle trips = total traffic count divided by 2 to account for entering/exiting)
  - Average daily vehicle trips to park: 161
  - Highest one-day number of vehicle trips: 630 (day of Youth Jamboree)
  - Average daily vehicle trips to park, not counting Youth Jamboree day: 148
  - Assuming double occupancy per vehicle, an average of 148 daily vehicle trips equals 30,192 people visiting Big Hollow just between Memorial Day and Labor Day.
  - Using the conservative estimate of 10% park usage the rest of the year, that's just shy of 40,000 visitors to the park annually.



## Trail Improvements

Des Moines County Conservation grew and improved its extensive trail system this year as well. Trail improvements such as widening, clearing, mapping and signage were completed at Hunt Woods, Luckenbill Woods and Big Hollow. The first section of the Flint River Trail was officially opened and numerous additional improvements took place there including the installation





of wayfinding signage and erosion control measures. More improvements and expansions of the county's trail system are planned in the coming years. Currently, Des Moines County Conservation maintains over 23 miles of trails throughout the county.

Park/Area	Miles of off-road trail
Big Hollow Recreation Area	10.3
Flint River Trail	6.2
Hunt Woods	2.3
Luckenbill Woods	2.2
Starr's Cave Park and Preserve	2.2
<b>Total</b>	<b>23.2 miles</b>

### Nesting Box Program

This year, Des Moines County Conservation staff and volunteers expanded the department's nesting box program by installing bluebird boxes. A total of 36 bluebird boxes were placed in a number of locations throughout Big Hollow and along the Flint River Trail. The boxes and related materials were donated by Conservation Board members Jim Steer and Jim Garnjobst. They also helped with the installation. Annually, DMCC staff and volunteers maintain 100 wood duck boxes and now 36 bluebird boxes throughout the county.

### Maintenance

In addition to regular park and facility maintenance and improvement projects, the department's four-person field staff at Big Hollow handles virtually all of the maintenance and upkeep of the department's tools, equipment, areas and facilities.

### Des Moines County Conservation Asset Summary:

- 75 total parks/areas (includes 57 FEMA buyout areas)
- 1,646 total acres
- 16 buildings
- 21 restrooms
- 15 shelter houses
- One cabin
- Six campgrounds
  - 128 total campsites
  - 66 electric campsites
  - 62 primitive campsites
- Six boat ramps
- Six boat docks, two fishing piers
- 18 parking lots (all gravel or natural surface)
- 10 pedestrian bridges
- 23 miles of trail
  - 6.2 miles gravel surface
  - 0.3 miles paved
  - Remainder are natural surface
- One shooting range complex with four ranges
- 23 pond/lake dams
- One beach
- One playground
- 12 park entrance signs
- 100 wood duck boxes
- 8 goose nesting structures
- 36 bluebird boxes

## Des Moines County Conservation Properties

		Acres	Camping	Electrical Hook Ups	Water	Restrooms	Picnicking	Shelter House(s)	Fishing	Hunting	Boating Access	Bicycle Trails	Hiking Trails
1	Big Hollow Recreation Area	798	*	*	*	*	*	*	*	*	*		*
2	Starr's Cave Park & Preserve	180			*	*	*	*					*
3	4 <sup>th</sup> Pumping Plant Recreation Area	6	*	*	*	*	*	*	*		*		
4	Welter Recreation Area	79	*	*	*	*	*	*	*	*	*		
5	Hickory Bend Conservation Area	175								*			
6	Flint River Trail	36										*	*
7	Hawkeye Dolbee Mississippi River Access	10							*		*		
8	Casey Barrow Landing (Mississippi River Access)	2					*	*	*		*		
9	Tama Beach Mississippi River Access	2							*		*		
10	Sullivan Slough (Mississippi River Access)	22							*	*	*		
11	Edgewater Beach Mississippi River Access	1							*				
12	Chautauqua Park	10			*	*	*	*					
13	Waters Roadside Park	2			*	*	*						
14	Kevin J. Gahn Memorial Recreation Area	56					*	*	*				
15	Hunt Woods	58				*	*	*		*			*
16	Luckenbill Woods Refuge	76							*				*
17	Zion Schoolhouse	1				*							
18	Hoover Trail	30											*
19	Buyout Properties (57 individual parcels, no public access)	102											
	<b>Total Acres</b>	<b>1646</b>											



## Conservation Education

DMCC's Conservation Education division continues to offer many outdoor learning opportunities and services to the public.

### Programs

Annual programs include an owl prowl, eagle watch, parent-tot classes, critter catch, nature at night, a kids fishing derby, open climbing wall days, cross country ski rentals, youth ice fishing clinics, the Outdoor Youth Jamboree, summer day camps, and a concert series. Starr's Cave Nature Center is available to the general public for rental; the facilities are also open to local civic groups for monthly meetings and classes.

This year set new records in both the number of programs provided by DMCC staff and the number of participants attending programs. **318 educational programs** were offered throughout the year to **15,243 participants**. That's 81 more programs (+34%) and 5,023 more participants (+49%) than last fiscal year. That's an average of over six programs delivered to more than 293 people PER WEEK year-round. Over the course of the fiscal year, a record-setting 10,623 people visited the nature center, 3,374 more than last year (+47%).



Once again, the highlight of the year's events was the **Youth Jamboree**, an all-day event at Big Hollow that brought in **well over 1,000 participants** and has quickly become one of the biggest and most anticipated events each year.

Participant feedback indicates that DMCC Environmental Education programs aren't just high in quantity; they're high *quality* as well. Point in case, here are a few comments received from program evaluations this year:

*"I can't wait to come again next year. The kids LOVED it!"* – 2<sup>nd</sup> grade teacher, Danville

### Mission Statement

"Des Moines County Conservation is dedicated to the sustainability of natural resources through land stewardship, **conservation education**, and by providing quality outdoor recreation opportunities."

*"Most of [the students] had never been inside a forest or had been hiking, so they loved it...Many of the parents of my students reported that their child talked for days about the trip..." 2<sup>nd</sup> grade teacher, La Harpe*

*"The students are so excited about each presentation and love the hands-on experiences." Pre-K teacher, Burlington*

*"I loved watching my students work together for a common goal. I was impressed by my activity leaders - a lot of them were students who are very quiet in the classroom...Thank you for all your hard work." – 7<sup>th</sup> grade teacher, Burlington*

## Volunteers

DMCC Volunteers were recognized during a celebration dinner in January. **Rose's Bait and Tackle** was recognized as volunteer group of the year for their long term support and donations to our youth and public fishing events. **Tracy Timmerman** was recognized as volunteer of the year for his continued support and efforts in natural resource management. Volunteers continue to make an enormous impact with Des Moines County Conservation.

## Nature Center Upgrades

In June, Des Moines County Conservation was awarded a \$50,000 grant from the **Harry and Virginia Murray Foundation** to upgrade Starr's Cave Nature Center. The grant will be awarded in \$10,000 annual increments over five years. Planned renovations include moving the staff offices to the lower level to optimize visitor services and expand exhibit space in the main exhibit area. Funding from the Murray Foundation will also help fund new interactive exhibits and displays throughout the main level. While most of the work will take place later, a new interactive touch screen kiosk and a remote weather station has already been installed at the nature center.



### Paddling Made Possible

An Alliant Foundation Grant in the amount of \$1,500 secured the final amount of funding needed to add canoes to the department's educational resources. Six Nucanoes – plastic molded, nearly unsinkable canoes were purchased along with a trailer using funds from the Alliant Foundation grant and the Partners for Conservation Foundation. The canoes were used during summer camps and will be used for future programs as well.





## LAND STEWARDSHIP

Des Moines County Conservation applies sound land stewardship efforts on both public and private land throughout the county. From contracted planting services to landowner technical assistance, DMCC's land stewardship efforts are broad and diverse. Below are highlights of DMCC's land stewardship efforts in fiscal year 2013-2014.



- Planted **146 acres** for landowners participating the Conservation Reserve Program (CRP)
- Planted **20 acres** of pollinator prairie restoration
- Completed **100 acres** of prescribed burns on private and public lands.
- Completed **25 acres** of forest management and planted **120 trees**.
- Planted **11 acres** of food plots (sunflowers and beans) and provided **40 acres** of food plot seed to landowners.
- Assisted **84 landowners** by providing habitat and private land assistance through the Acres for Wildlife program.

## Habitat Improvement Award

At the Iowa Association of County Conservation Boards Fall Conference in 2013, Des Moines County Conservation was awarded a Habitat Improvement Award from the Izaak Walton League of America. The award annually recognizes County Conservation Boards throughout the state "for outstanding efforts in establishing habitat for wildlife."



## Staff Change

After four years as Natural Resource Manager, Andrew Mason resigned in April 2014. Jeremy Yost, the department's Conservation Technician was selected to take his place. He officially assumed the role of Natural Resource Manager on June 9.

## Mission Statement

"Des Moines County Conservation is dedicated to the sustainability of natural resources through **land stewardship**, conservation education, and by providing quality outdoor recreation opportunities."

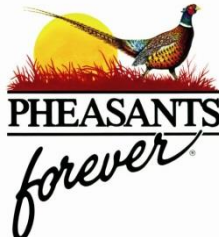
## ADMINISTRATION

Fiscal year 2014 continued the “transitional phase” for Des Moines County Conservation that began in 2013. Some changes in staffing took place with the resignation of Natural Resource Manager Andrew Mason in April. Jeremy Yost, the department’s Conservation Technician, was selected to replace Andrew, leaving the Tech position vacant through the end of the fiscal year. However, some of the staffing issues were mitigated by a quality group of interns and an expanded intern program. Both Dilan Beaird and Patrick Moore returned in the summer of 2014 after serving as Conservation Interns in 2013. Will Reckhemmer joined them for his first summer internship in 2014. Robyn Smalley spent the 2014 summer assisting Environmental Education staff with camps and programs as the department’s intern naturalist, a position left vacant in 2013.

The transitional phase continued at the Board level with the resignation of Board Chair Stacey Rector in November. Then Vice-chair Cathy Ziglar was appointed to fill the Chair position and Angela Vaughan was selected by the Board of Supervisors to fill the vacancy left by Rector.

Much of the department’s administrative efforts this fiscal year were focused first on establishing better strategic goals, then achieving them. A Strategic Plan was approved by the Conservation Board in September and an updated version was approved in January. The plan identified 16 top priorities with development at Big Hollow Recreation Area, the acquisition of the Leopold Recreation Area and the continued development of the Flint River Trail as the top three.

In keeping with those goals, DMCC made headway on the acquisition of the Leopold Recreation Area when it took top score on a Land and Water Conservation Fund (LWCF) grant application. The \$150,000 award all but secured the funding needed to finalize the purchase. Another \$20,000 was awarded toward the project by the Iowa Pheasants Forever Trust Fund. That award was made possible by a partnership between DMCC, the Aldo Leopold Chapter of Pheasants Forever and the Partners for Conservation Foundation. Subsequent grant requests are pending but the department expects to close on the 235 acre “Leopold Recreation Area” in fiscal year 2015.



Big Hollow and the Flint River Trail continued to progress administratively this year as well. Grant requests were written and progress was made on the surveying and permitting of the next phases of those long-term projects.

A new management plan for the property now known as the Kevin J. Gahn Memorial Recreation Area was approved by the board. In addition to extensive natural resource management, the plan establishes a means for the property to be used by organized groups such as Boy Scouts, 4-H clubs and others. The property will also be made publicly available during department-scheduled events.

### **Professional Development**

In fiscal year 2014, Des Moines County Conservation staff attended a number of professional development trainings. Some of those include the following.

- National Association for Interpretation
- Iowa Association of Naturalists
- National Archery In The Schools Program
- Iowa DNR flat water training
- IOWATER training, Des Moines County
- Iowa STEM Fair & Conference
- North American Association of Environmental Educators
- Midwest Environmental Education Conference
- Iowa Association of County Conservation Boards
- County Conservation Directors Association
- Iowa State Association of Counties
- County Conservation Peace Officers Association
- Iowa DNR Basic Shotgun Coach Training
- Pheasants Forever State Habitat Conference
- Iowa Trails Summit

### **Professional Service**

Des Moines County Conservation staff has been involved with the following organizations:

- Keep Burlington Beautiful
- Leopold Heritage Group
- Greater Burlington Convention & Visitors Bureau
- Youth Jamboree Planning Committee
- Planning Committee for the Blondes VS Brunettes Flag football game for the local Alzheimer's Association
- Wildlife rehab through the Des Moines County Wildlife Rehab group
- Aldo Leopold Pheasants Forever
- Downtown Partners, Inc.
- Greater Burlington Young Professionals
- Scholastic Clay Target Program

## Value of County Parks

It's clear that people value outdoor recreation opportunities in Des Moines County. But just how much value do those areas provide to the community? A study published by Iowa State University in 2007 titled, "The Economic Value of Iowa's Natural Resources" provides a way to estimate the economic impact of parks and campgrounds. Using the spending numbers provided in that study, we estimate conservatively that visitors to Des Moines County Conservation's main parks contribute over **\$2 million** annually to the local economy through direct spending. That doesn't take into account any spending generated from the department's other, less-developed passive or day use areas such as Hunt Woods, Luckenbill Woods, Hickory Bend Conservation Area or any of the four Mississippi River accesses.

"Visitors to Des Moines County Conservation's main parks contribute over **\$2 million** annually to the local economy through direct spending."

According to the survey, Des Moines County parks contributed to an estimated \$10,094,653 in expenditures between 2001 and 2006. That equates to just over \$2 million per year during that time. Similar numbers are generated using actual visitor counts from Des Moines County parks multiplied by the same 2006 daily expenditure numbers used in the study.

The Iowa State study estimates around 80,000 people visit Des Moines County parks annually. This estimate is a bit harder to verify since no actual visitor count numbers are available for the county's undeveloped or passive-use parks. However, visitor counts from Big Hollow Recreation Area, Starr's Cave Park and Preserve, the Flint River Trail, and camper counts from the 4<sup>th</sup> Pumping Station and Welter Recreation Area campgrounds indicate annual combined visitation just to those areas is around 60,000 people. Accounting for visitation to the four boat ramps, two roadside parks and three natural resource areas and the study's estimate of county-wide park visitation is probably not far off.



## FACTS AND FIGURES

### Big Hollow Shooting Range

#### Memberships

**FY 2014 Range Membership**

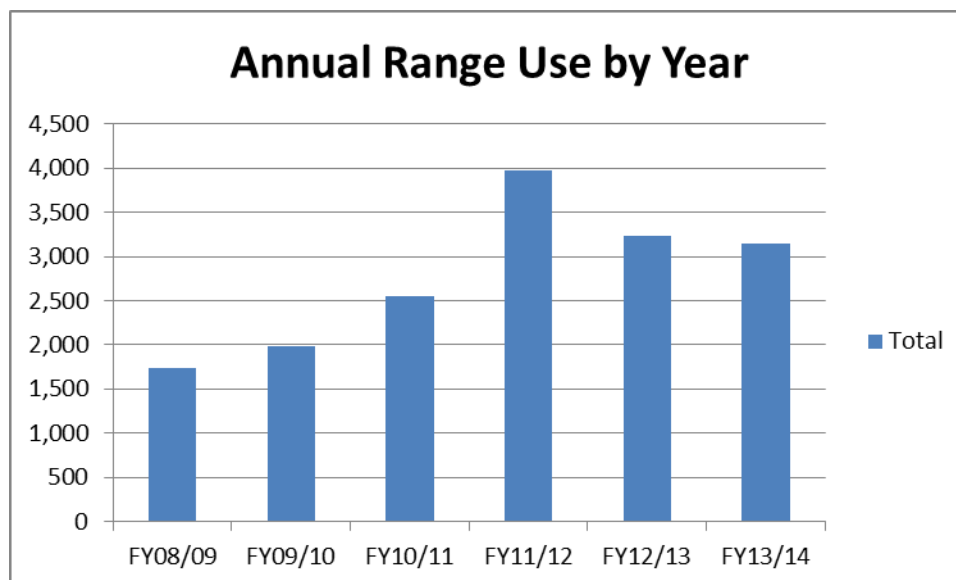
	Life Members	Family	Single	New Family	New Single	Total Paid
<b>FY 08/09</b>	2	167	295	51	46	561
<b>FY 09/10</b>	2	177	306	67	84	636
<b>FY 11/12</b>	2	208	332	94	89	725
<b>FY 12/13</b>	2	299	410	81	95	885
<b>FY 13/14</b>	2	301	348	74	76	799

#### Range Use

**Shooting Range Use By Month**

	Jul	Aug	Sep	Oct	Nov	Dec	Jan	Feb	Mar	Apr	May	Jun	Total
<b>FY08/09</b>	195	203	192	129	213	82	67	56	40	199	202	166	<b>1,744</b>
<b>FY09/10</b>	182	191	235	175	192	88	70	92	181	179	222	176	<b>1,983</b>
<b>FY10/11</b>	233	225	206	277	254	112	95	88	255	282	274	247	<b>2,548</b>
<b>FY11/12</b>	212	303	419	371	324	304	195	197	390	480	383	394	<b>3,972</b>
<b>FY12/13</b>	323	361	489	236	282	209	180	148	197	247	209	358	<b>3,239</b>
<b>FY13/14</b>	372	423	367	296	213	216	109	34	253	289	287	286	<b>3,145</b>
<b>Average</b>	<b>253</b>	<b>284</b>	<b>318</b>	<b>247</b>	<b>246</b>	<b>169</b>	<b>119</b>	<b>103</b>	<b>219</b>	<b>279</b>	<b>263</b>	<b>271</b>	<b>2,772*</b>

\*Daily annualized average = 8 range users per day, year round.



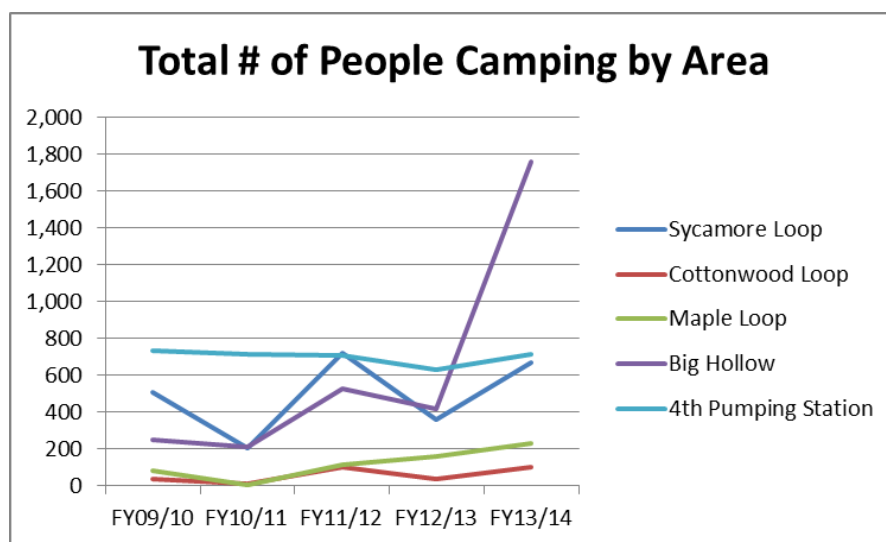
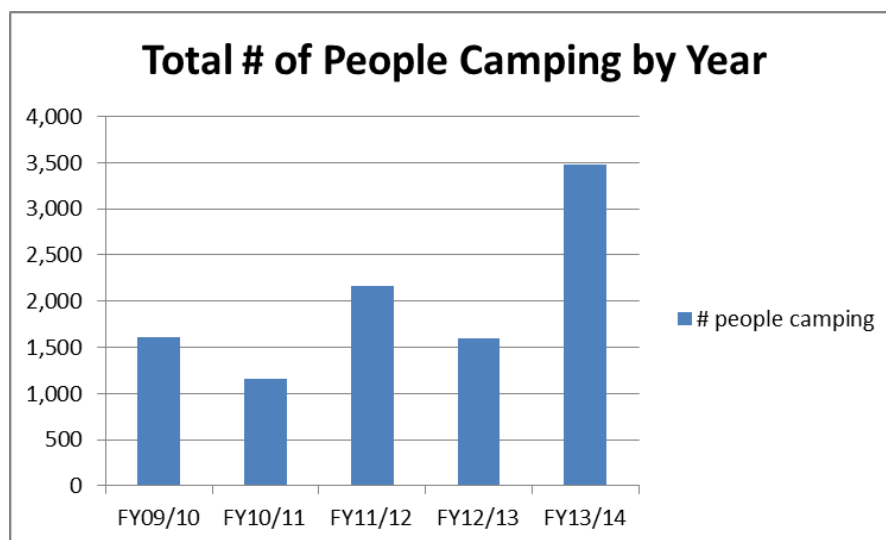
## Camping

Over 3,400 individuals spent 2,737 camping party nights in DMCC parks in FY2014. A 'camping party night' is defined as one group of people camping in one campsite for one night.

### Campground Usage by Year - # of People Camping

Campground	FY09/10	FY10/11	FY11/12	FY12/13	FY13/14
Sycamore Loop	508	206	719	358	669
Cottonwood Loop	38	14	99	36	103
Maple Loop	81	6	115	157	231
Big Hollow	251	211	526	419	1,759
4 <sup>th</sup> Pumping Station	737	717	706	628	714
<b>Totals</b>	<b>1,615</b>	<b>1,154</b>	<b>2,165</b>	<b>1,598</b>	<b>3,476*</b>

\*Represents a 118% increase over the previous year.



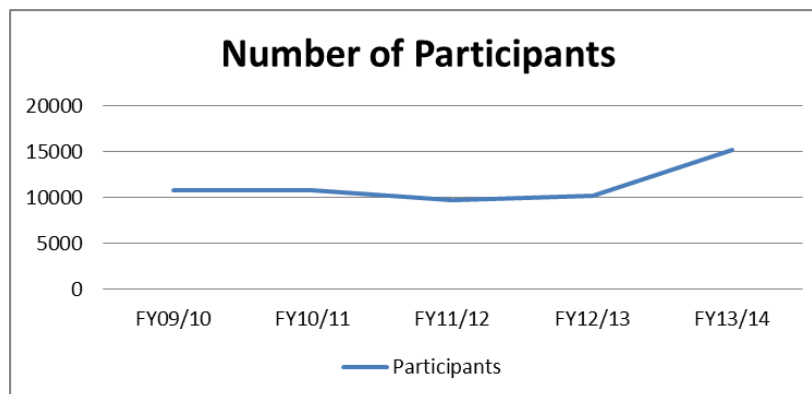
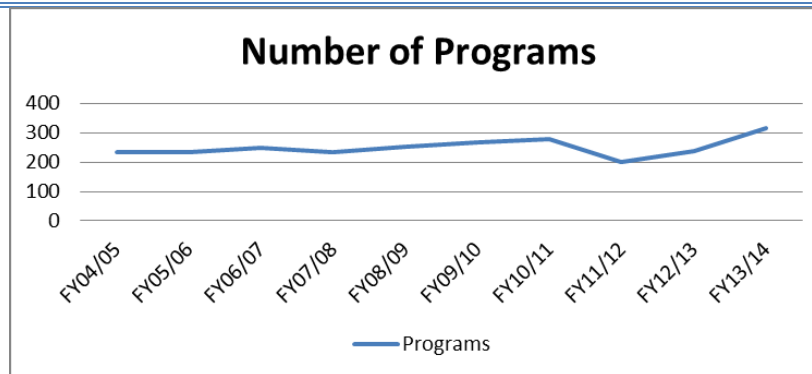
## Conservation Education

### Environmental Education Programs and Attendance - FY 2013/14

		July	Aug	Sept	Oct	Nov	Dec	Jan	Feb	Mar	Apr	May	Jun	Total
Pre – K	Programs	3		7	12	9	3	6	8	9	9	4		70
	Participants	52		256	427	300	111	197	261	279	370	116		2369
1 <sup>st</sup> – 2 <sup>nd</sup>	Programs			5	4	6	4	1	4	5	2	6		37
	Participants			278	201	319	211	67	209	246	120	443		2094
3 <sup>rd</sup> – 5 <sup>th</sup>	Programs	1		5	5	4	3	6	8	9	7	5		53
	Participants	44		223	256	202	154	308	408	519	372	228		2714
6 <sup>th</sup> – 8 <sup>th</sup>	Programs			2	6	4	1		2	4		2		21
	Participants			212	499	321	142		60	250		152		1636
9 <sup>th</sup> – 12 <sup>th</sup>	Programs										1	1		2
	Participants										42	15		57
Home School	Programs			1					1		1	1		4
	Participants			15					28		20	30		93
Care Centers	Programs		2		2	2	1	1	3	3	2			16
	Participants		47		25	30	7	10	57	29	24			229
Youth Groups	Programs	1	1	5	11	6	2	4	5	7	7	3	2	54
	Participants	5	11	134	371	149	40	109	91	151	118	125	53	1357
Civic Groups	Programs			1	1		1						1	4
	Participants			18	100		20						20	158
Public	Programs	1	2	2	3	1		2	6	2	5	6	2	32
	Participants	35	28	75	515	25		110	112	110	1278	1203	25	3516
Professional	Programs		1											1
	Participants		350											350
Hunter/Range	Programs		2				1			3	1		1	8
	Participants		100				27			120	61		45	353
Camps	Programs	8	2										5	15
	Participants	151	36										70	257
Volunteer	Programs							1						1
	Participants							60						60
<b>TOTAL</b>	<b>Programs</b>	<b>14</b>	<b>10</b>	<b>28</b>	<b>44</b>	<b>32</b>	<b>16</b>	<b>21</b>	<b>37</b>	<b>42</b>	<b>35</b>	<b>28</b>	<b>11</b>	<b>318</b>
	<b>Participants</b>	<b>287</b>	<b>572</b>	<b>1,211</b>	<b>2,394</b>	<b>1,346</b>	<b>712</b>	<b>861</b>	<b>1,226</b>	<b>1,704</b>	<b>2,405</b>	<b>2,312</b>	<b>213</b>	<b>15,243</b>

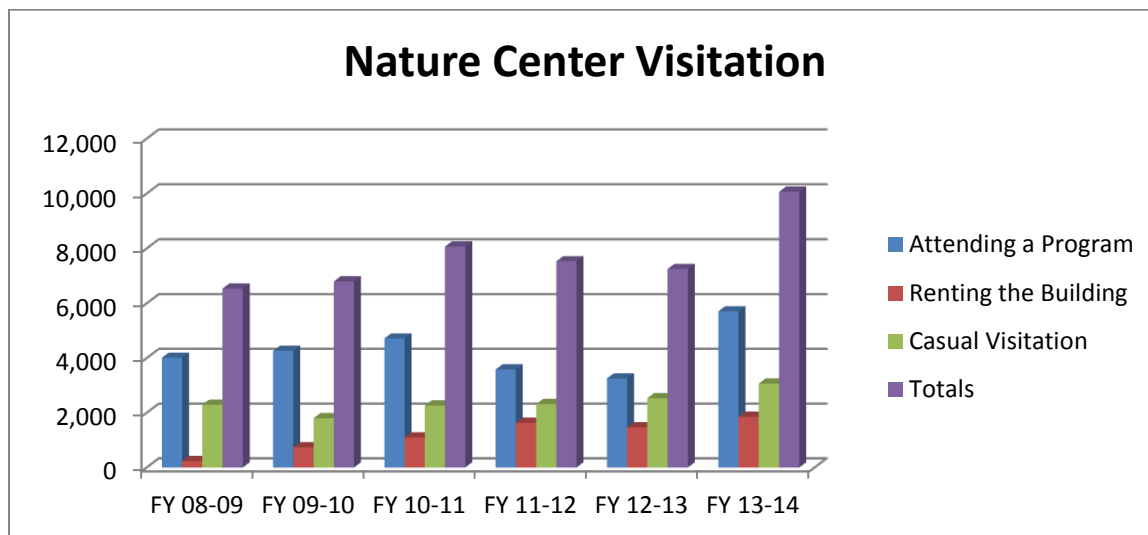
### Program and Participant Analysis FY 2013/14

	Programs		Participants	
	# of Programs	+/- change from previous FY	# of Participants	+/- change from previous FY
<b>Preschool – K</b>	70	13	2,369	34
<b>1<sup>st</sup> – 2<sup>nd</sup></b>	37	6	2,094	378
<b>3<sup>rd</sup> – 5<sup>th</sup></b>	53	27	2,714	1369
<b>6<sup>th</sup> – 8<sup>th</sup></b>	21	17	1636	1354
<b>9<sup>th</sup> – 12<sup>th</sup></b>	2	-3	57	-1
<b>Home Schools</b>	4	4	93	93
<b>Care Centers</b>	16	5	229	76
<b>Youth Groups</b>	54	11	1357	366
<b>Civic Groups</b>	4	-1	158	71
<b>Public</b>	32	2	3,516	1085
<b>Professional Training</b>	1	-2	350	68
<b>Hunter/Range Safety</b>	8	3	353	141
<b>Camps</b>	15	0	257	10
<b>Volunteers</b>	1	0	60	10
<b>Totals</b>	<b>318</b>	<b>82</b>	<b>15,243</b>	<b>5,054</b>



### Starr's Cave Nature Center Visitation

Type of visitation	FY 08-09	FY 09-10	FY 10-11	FY 11-12	FY 12-13	FY 13-14
Attending a Program	4,009	4,259	4,713	3,580	3,252	5,706
Renting the Building	237	737	1,095	1,635	1,465	1,850
Casual Visitation	2,292	1,801	2,262	2,315	2,532	3,067
<b>Totals</b>	<b>6,538</b>	<b>6,797</b>	<b>8,070</b>	<b>7,530</b>	<b>7,249</b>	<b>10,063</b>



## Financial Statement

### Revenue

**0001**

**GENERAL BASIC**

#### *Year-to-date Revenues*

#### ***Account Number***

0001-1-22-6110-412000	BOAT TITLES	1,703.75
0001-1-22-6110-441021	SHOOTING RANGE CERTIFI-NEW	0.00
0001-1-22-6110-441022	SHOOTING RANGE CERTIFI-RENEWALS	0.00
0001-1-22-6110-520031	CAMP FEES-AREA 1 LOWER AUGUSTA	8,132.00
0001-1-22-6110-520034	CAMP FEES-AREA 4 LOWER AUGUSTA	507.00
0001-1-22-6110-520037	CAMP FEE-WELTER REC PARK	982.00
0001-1-22-6110-520038	CAMP FEE-BIG HOLLOW CREEK	0.00
0001-1-22-6110-520039	CAMP FEE-4TH PUMPING PLANT REC	9,908.00
0001-1-22-6110-520041	CAMP FEE-MISC RELATED TO CAMP	0.00
0001-1-22-6110-523044	REC FACILITY RENT-SHOOTING RANGE	0.00
0001-1-22-6110-523045	REC FACILITY RENT-STARR'S CAVE N	1,010.00
0001-1-22-6110-523047	REC FACILITY RENT-SHELTERS	10.00
0001-1-22-6110-612000	RENTALS-EQUIPMENT & MACHINERY	1,296.50
0001-1-22-6110-847000	MISCELLANEOUS REIMB	1,163.16
0001-1-22-6110-847064	MISC REIMB-PLANTING SERVICES	0.00
0001-1-22-6120-529000	PROGRAM FEES	771.25
<b>Grand Total</b>		<b>25,483.66</b>

**0023**

**REAP - COUNTY CONSERVATION**

#### *Year-to-date Revenues*

#### ***Account Number***

0023-2-22-6110-846067	REAP GRANTS-CONTR-EQUAL SHARE	9,848.00
0023-2-22-6110-846068	REAP GRANTS-CONTR-PER CAPITA	12,784.00
0023-4-22-6110-600000	INTEREST ON INVESTMENTS	177.59
<b>Grand Total</b>		<b>22,809.59</b>

**0027**

**COUNTY CONSERVATION RESERVE**

#### *Year-to-date Revenues*

#### ***Account Number***

0027-1-22-6110-441021	SHOOTING RANGE CERTIFI-NEW	5,355.00
0027-1-22-6110-441022	SHOOTING RANGE CERTIFI-RENEWALS	19,908.50
0027-1-22-6110-520000	CABIN RENTALS	1,305.00
0027-1-22-6110-520038	CAMP FEE-BIG HOLLOW CREEK	16,009.00
0027-1-22-6110-520041	CAMP FEE-MISC RELATED TO CAMP	1,660.36
0027-1-22-6110-523044	REC FACILITY RENT-SHOOTING RANGE	150.00
0027-1-22-6110-523046	REC FACILITY RENT-EXCLUSIVE USE	165.00
0027-1-22-6110-523047	REC FACILITY RENT-SHELTERS	330.00
0027-1-22-6110-847000	MISCELLANEOUS REIMB	323.52
0027-1-22-6110-847064	MISC REIMB-PLANTING SERVICES	8,602.50
<b>Grand Total</b>		<b>53,808.88</b>

**Expenditures****0001****GENERAL BASIC**

<i>Account Number</i>		<i>Adjusted Appropriation</i>	<i>Year-to-date Expenditures</i>	<i>Balance</i>	<i>Prct Used</i>
0001-22-0210-000-42360	CONSULTATIONS & SURVEYS	15,000.00	10,079.55	4,920.45	67.20
0001-22-0220-000-62810	BHCRA/PERM IMPROVEMENTS	5,000.00	4,772.88	227.12	95.46
0001-22-6100-000-10010	ADMINISTRATORS/EXEC DIRECTOR	49,000.00	49,613.96	-613.96	101.25
0001-22-6100-000-10050	CORR OFF/P RNGR/OFC MGR/CIV ATTY	42,860.00	43,854.46	-994.46	102.32
0001-22-6100-000-10200	LONGEVITY	800.00	1,600.00	-800.00	200.00
0001-22-6100-000-12600	CONSERVATION BOARD	250.00	519.99	-269.99	208.00
0001-22-6100-000-26000	OFFICE SUPPLIES	2,000.00	2,004.90	-4.90	100.25
0001-22-6100-000-26100	MAGAZINES/PERIODICALS & BOOKS	600.00	263.01	336.99	43.84
0001-22-6100-000-26200	DATA PROCESSING SUPPLIES	2,500.00	1,133.34	1,366.66	45.33
0001-22-6100-000-29400	WEARING APPARREL & UNIFORMS	600.00	371.58	228.42	61.93
0001-22-6100-000-40000	OFC PUBLICATIONS & LEGAL NOTCS	1,200.00	423.54	776.46	35.30
0001-22-6100-000-40200	TYPE PRINT & BIND SERVICES	500.00	164.00	336.00	32.80
0001-22-6100-000-41200	POSTAGE & MAILING	4,000.00	33.17	3,966.83	0.83
0001-22-6100-000-41400	TELECOMMUNICATIONS SRVS	5,000.00	2,501.00	2,499.00	50.02
0001-22-6100-000-42210	SCHOOL OF INSTRUCTION	1,000.00	1,735.87	-735.87	173.59
0001-22-6100-000-44400	OFC & DATA P EQUIP REPR/MAINT	1,300.00	1,866.25	-566.25	143.56
0001-22-6100-000-48000	DUES & MEMBERSHIPS	3,700.00	2,927.00	773.00	79.11
0001-22-6110-000-10020	DEPUTIES/ASSTS/INVESTI/FOREMAN	41,000.00	41,248.39	-248.39	100.61
0001-22-6110-000-10030	CLERKS	33,949.00	29,518.11	4,430.89	86.95
0001-22-6110-000-10050	CORR OFF/P RNGR/OFC MGR/CIV ATTY	40,436.00	41,087.02	-651.02	101.61
0001-22-6110-000-10070	NATURALIST/PARK TECH/RD BIOLOGIS	33,949.00	31,106.17	2,842.83	91.63
0001-22-6110-000-10100	TEMPORARY & PART TIME	7,000.00	10,934.50	-3,934.50	156.21
0001-22-6110-000-10200	LONGEVITY	2,400.00	1,600.00	800.00	66.67
0001-22-6110-000-20200	CHEMICALS & GASES/HERBICIDES	1,000.00	642.32	357.68	64.23
0001-22-6110-000-20300	FERTILIZER & SEED	2,500.00	2,170.44	329.56	86.82
0001-22-6110-000-20400	TREES & SHRUBS	500.00	122.90	377.10	24.58
0001-22-6110-000-21210	PARKS	9,000.00	7,451.88	1,548.12	82.80
0001-22-6110-000-21400	TRAFFIC & ST SIGN MATERIALS	2,000.00	2,546.17	-546.17	127.31
0001-22-6110-000-21910	PARKS	10,000.00	7,999.90	2,000.10	80.00
0001-22-6110-000-21920	BOAT RAMPS	500.00	381.64	118.36	76.33
0001-22-6110-000-21930	SHOPS	1,600.00	943.81	656.19	58.99
0001-22-6110-000-21940	LOWER & UPPER AUGUSTA/WELTER	1,000.00	287.33	712.67	28.73
0001-22-6110-000-21950	STARRS CAVE NATURE CENTER	2,600.00	4,204.71	-1,604.71	161.72
0001-22-6110-000-21960	HOUSES/TRAILER	400.00	155.60	244.40	38.90
0001-22-6110-000-21980	RIVER CORRIDOR AREAS	2,500.00	1,700.00	800.00	68.00
0001-22-6110-000-21990	OTHER	3,500.00	299.38	3,200.62	8.55
0001-22-6110-000-23210	PARKS	2,000.00	1,642.20	357.80	82.11
0001-22-6110-000-23230	SHOPS	400.00	195.99	204.01	49.00
0001-22-6110-000-23250	STARRS CAVE NATURE CENTER	1,000.00	961.28	38.72	96.13
0001-22-6110-000-24000	NON-MV MACH & EQUIP	1,500.00	1,784.55	-284.55	118.97
0001-22-6110-000-25000	FUELS	18,500.00	18,075.30	424.70	97.70
0001-22-6110-000-25100	LUBRICANTS	1,000.00	1,218.33	-218.33	121.83
0001-22-6110-000-25400	MINOR MV PARTS & ACCESSORIES	500.00	137.22	362.78	27.44
0001-22-6110-000-26100	MAGAZINES/PERIODICALS & BOOKS	310.00	222.01	87.99	71.62
0001-22-6110-000-26200	DATA PROCESSING SUPPLIES	880.00	926.94	-46.94	105.33
0001-22-6110-000-29000	MINOR EQUIPMENT & HAND TOOLS	1,000.00	2,009.78	-1,009.78	200.98
0001-22-6110-000-29300	SAFETY & PROTECTIVE SUPPLIES	2,000.00	1,653.91	346.09	82.70
0001-22-6110-000-29302	LAW ENFORCEMENT SUPPLIES	750.00	934.70	-184.70	124.63



<b>Account Number</b>	<b>Adjusted Appropriation</b>	<b>Year-to-date Expenditures</b>	<b>Balance</b>	<b>Prct Used</b>
0001-22-6110-000-29400 WEARING APPARREL & UNIFORMS	1,200.00	1,020.00	180.00	85.00
0001-22-6110-000-41450 STARRS CAVE NATURE CENTER	2,300.00	3,478.44	-1,178.44	151.24
0001-22-6110-000-41480 BHCRA SHOP	3,500.00	4,905.83	-1,405.83	140.17
0001-22-6110-000-42210 SCHOOL OF INSTRUCTION	2,500.00	117.50	2,382.50	4.70
0001-22-6110-000-42212 LAW ENFORCEMENT SCH INST	1,000.00	322.48	677.52	32.25
0001-22-6110-000-43000 NATURAL & LP GAS	2,000.00	3,890.48	-1,890.48	194.52
0001-22-6110-000-43110 PARKS	6,000.00	6,139.05	-139.05	102.32
0001-22-6110-000-43120 BOAT RAMPS	225.00	261.22	-36.22	116.10
0001-22-6110-000-43130 SHOPS	0.00	922.95	-922.95	0.00
0001-22-6110-000-43140 LOWER & UPPER AUGUSTA/WELTER	1,700.00	1,669.99	30.01	98.23
0001-22-6110-000-43150 STARRS CAVE NATURE CENTER	4,000.00	3,742.32	257.68	93.56
0001-22-6110-000-43160 ELECTRIC-ADMIN	5,500.00	5,095.25	404.75	92.64
0001-22-6110-000-43190 OTHER	150.00	130.62	19.38	87.08
0001-22-6110-000-43200 WATER USE	348.00	377.00	-29.00	108.33
0001-22-6110-000-43210 PARKS	1,700.00	1,252.05	447.95	73.65
0001-22-6110-000-43240 LOWER & UPPER AUGUSTA/WELTER	725.00	464.00	261.00	64.00
0001-22-6110-000-43250 STARRS CAVE NATURE CENTER	425.00	372.08	52.92	87.55
0001-22-6110-000-43290 OTHER	312.00	348.00	-36.00	111.54
0001-22-6110-000-44000 MOTOR VEH EQUIP REPAIR/MAINT	6,000.00	4,514.02	1,485.98	75.23
0001-22-6110-000-44130 SHOPS	800.00	911.61	-111.61	113.95
0001-22-6110-000-44140 LOWER & UPPER AUGUSTA/WELTER	150.00	0.00	150.00	0.00
0001-22-6110-000-44150 STARRS CAVE NATURE CENTER	4,000.00	460.29	3,539.71	11.51
0001-22-6110-000-44160 HOUSES/TRAILER	3,000.00	6,029.47	-3,029.47	200.98
0001-22-6110-000-44300 OPER & CONSTR EQUIP REPAIR/MAINT	3,000.00	5,176.35	-2,176.35	172.55
0001-22-6110-000-44711 LAW ENFORCEMENT EQUIPMENT	2,000.00	464.96	1,535.04	23.25
0001-22-6110-000-48320 CONTRACT MOWING	25,000.00	18,394.90	6,605.10	73.58
0001-22-6110-000-49600 REFUND-PERMITS/LICENSES/DEPOSITS	0.00	25.00	-25.00	0.00
0001-22-6110-000-63500 MOTOR VEHICLE	30,000.00	0.00	30,000.00	0.00
0001-22-6120-000-10070 NATURALIST/PARK TECH/RD BIOLOGIS	32,887.00	32,504.91	382.09	98.84
0001-22-6120-000-10090 OTHER/LT	30,000.00	30,482.66	-482.66	101.61
0001-22-6120-000-10100 TEMPORARY & PART TIME	3,000.00	0.00	3,000.00	0.00
0001-22-6120-000-21510 NESTING BOX PROGRAM	400.00	0.00	400.00	0.00
0001-22-6120-000-26100 MAGAZINES/PERIODICALS & BOOKS	225.00	243.00	-18.00	108.00
0001-22-6120-000-29200 RECREATIONAL SUPPLIES	1,500.00	5,667.79	-4,167.79	377.85
0001-22-6120-000-29400 WEARING APPARREL & UNIFORMS	600.00	534.31	65.69	89.05
0001-22-6120-000-29510 PROGRAM RENTAL/PURCHASES	100.00	0.00	100.00	0.00
0001-22-6120-000-29520 DEVELOPMENT/MATERIALS	1,000.00	1,300.00	-300.00	130.00
0001-22-6120-000-29700 EE PROGRAM SUPPLIES	1,000.00	1,326.26	-326.26	132.63
0001-22-6120-000-40220 BROCHURES/PAMPHLETS	4,500.00	3,786.50	713.50	84.14
0001-22-6120-000-40600 NEWSLETTERS	1,000.00	1,312.44	-312.44	131.24
0001-22-6120-000-42210 SCHOOL OF INSTRUCTION	3,000.00	386.18	2,613.82	12.87
0001-22-6120-000-42940 MARKETING SERVICES	4,500.00	2,349.86	2,150.14	52.22
0001-22-6120-000-44400 OFC & DATA P EQUIP REPR/MAINT	500.00	223.75	276.25	44.75
0001-22-6120-000-44730 EE EQUIP REPR/MAINT	250.00	8.02	241.98	3.21
0001-22-6120-000-49930 VOLUNTEER SRVS	200.00	0.00	200.00	0.00
0001-22-6120-000-63830 EE EQUIPMENT	1,300.00	46.48	1,253.52	3.58
<b>Grand Total</b>	<b>554,481.00</b>	<b>488,685.00</b>	<b>65,796.00</b>	<b>88.13</b>

**0002 GENERAL SUPPLEMENTAL**

<i>Account Number</i>	<i>Adjusted Appropriation</i>	<i>Year-to-date Expenditures</i>	<i>Balance</i>	<i>Prct Used</i>
0002-22-6100-000-11000 FICA	7,418.00	7,191.17	226.83	96.94
0002-22-6100-000-11100 IPERS	8,659.00	8,489.44	169.56	98.04
0002-22-6100-000-11300 GROUP INSURANCE	33,575.00	33,763.68	-188.68	100.56
0002-22-6110-000-11000 FICA	11,696.00	11,838.19	-142.19	101.22
0002-22-6110-000-11100 IPERS	14,360.00	13,901.29	458.71	96.81
0002-22-6110-000-11300 GROUP INSURANCE	56,851.00	61,525.71	-4,674.71	108.22
0002-22-6120-000-11000 FICA	4,811.00	4,734.93	76.07	98.42
0002-22-6120-000-11100 IPERS	5,615.00	5,624.99	-9.99	100.18
0002-22-6120-000-11300 GROUP INSURANCE	33,575.00	33,326.34	248.66	99.26
<b>Grand Total</b>	<b>176,560.00</b>	<b>180,395.74</b>	<b>-3,835.74</b>	<b>102.17</b>

**Grants**

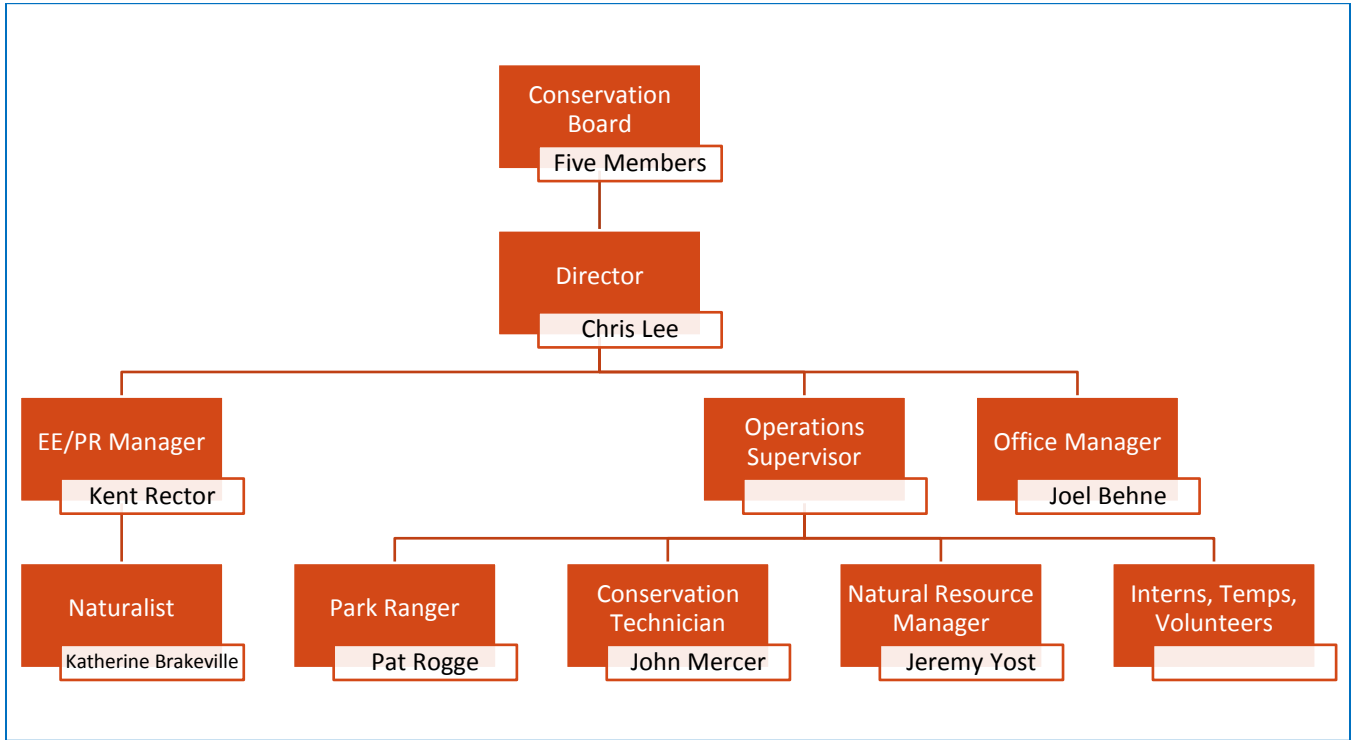
- **Harry & Virginia Murray Foundation:** \$50,000 (\$10,000 this fiscal year) to be used for Starr's Cave Nature Center upgrades. Will be awarded in \$10,000 increments for five years.
- **Land and Water Conservation Fund:** \$150,000 to be used toward purchase of Leopold Recreation Area. Actual grant award and expenditure will take place in FY15.
- **Iowa Pheasants Forever Trust Fund:** \$20,000 to be used toward the purchase of the Leopold Recreation Area. This funding was made possible by a partnership with the Aldo Leopold Chapter of Pheasants Forever and the Partners for Conservation Foundation.
- **Alliant Energy Foundation:** \$1,500 for purchase of canoes for education programs and public rentals.
- **Iowa DNR Wildlife Diversity Program:** \$5,000 to be used to hire a Conservation Corps crew to perform forest management activities at Big Hollow. Expenditure will occur in FY15.

**Financial Summary**

The fiscal year ended with a balance of \$65,796 in General Basic. However, \$30,000 of that was allocated from bond funds for equipment purchases meaning the actual ending fund balance was \$35,796 in General Basic. Ending fund balance in General Supplemental was -\$3,835.74. General Basic revenues came in lower than originally budgeted but this was expected since the budget had already been set when the Supervisors approved redirecting income from Big Hollow Recreation Area to the Conservation Reserve account to fund future capital improvements to the park. With the campground at Big Hollow coming on line this year and shooting range maintaining high membership numbers, the park generated nearly \$54,000 in revenue. Those funds will be used in the future to continue the park's development.

REAP allocations were also above budget thanks to a \$4 million increase in the program's allocation by the legislature in 2013.

## Organizational Chart



## EMPLOYEE DIRECTORY

Position	Employee	Work Address	Phone(s)
<b>Director</b>	Chris Lee	<b>Main Office</b> 13700 Washington Rd. West Burlington, IA 52655 leec@dmcounty.com	(319) 753-8260 (319) 572-1564
<b>Operations Supervisor</b>	Position currently vacant	<b>Maintenance Shops</b> 18836 Ranger Ln. Sperry, IA 52650	(319) 985-2502
<b>Environmental Education/Public Relations Coordinator</b>	Kent Rector	<b>Starr's Cave Nature Center</b> 11627 Starr's Cave Rd. Burlington, IA 52601 rectork@dmcounty.com	(319) 753-5808 (319) 768-8057
<b>Office Manager</b>	Joel Behne	<b>Main Office</b> 13700 Washington Rd. West Burlington, IA 52655 dmconbd@dmcounty.com	(319) 753-8260
<b>Natural Resource Manager</b>	Jeremy Yost	<b>Maintenance Shops</b> 18836 Ranger Ln. Sperry, IA 52650 yostj@dmcounty.com	(319) 985-2502 (319) 572-6865
<b>Park Ranger</b>	Pat Rogge	<b>Maintenance Shops</b> 18836 Ranger Ln. Sperry, IA 52650 roggep@dmcounty.com	(319) 985-2502 (319) 759-4779
<b>Naturalist</b>	Katherine Brakeville	<b>Starr's Cave Nature Center</b> 11627 Starr's Cave Rd. Burlington, IA 52601 brakevillek@dmcounty.com	(319) 753-5808 (319) 572-0474
<b>Conservation Technician</b>	John Mercer	<b>Maintenance Shops</b> 18836 Ranger Ln. Sperry, IA 52650 mercerv@dmcounty.com	(319) 985-2502

## BOARD MEMBER DIRECTORY

Position	Name	Term Expires
<b>Chair</b>	Cathy Ziglar	12/31/2014
<b>Vice-Chair</b>	James E. Steer	12/31/2018
<b>Secretary/Treasurer</b>	James Garnjobst	12/31/2016
<b>Member</b>	LaVon L. Worley	12/31/2017
<b>Member</b>	Angela Vaughan	13/31/2015

## Conservation Board Meetings

- July 10, 2013
- August 7, 2013
- September 11, 2013
- October 2, 2013
- October 14, 2013\*
- November 6, 2013
- November 21, 2013\*
- December 4, 2013
- January 8, 2014
- January 27, 2014\*
- January 30, 2014\*
- February 5, 2014
- February 18, 2014\*
- March 5, 2014
- April 2, 2014
- May 7, 2014
- June 4, 2014
- June 18, 2014\*

\*Indicates special meetings or work sessions outside of normal monthly meetings.