

FY 2014-2015 Annual Report

JULY 1, 2014 TO JUNE 30, 2015



**Des Moines County
Conservation**

*Chris Lee, Executive Director
Des Moines County Conservation
13700 Washington Rd.
West Burlington, IA 52655
(319) 753-8260
www.dmcconservation.com*

Des Moines County Conservation is dedicated to the sustainability of natural resources through land stewardship, conservation education, and by providing quality outdoor recreation opportunities.

Table of Contents

TABLE OF CONTENTS.....	2
EXECUTIVE SUMMARY.....	3
YEAR AT A GLANCE.....	4
OUTDOOR RECREATION.....	5
LEOPOLD RECREATION AREA	5
RECORD CAMPING NUMBERS	6
BIG HOLLOW PARK IMPROVEMENTS.....	7
TRAIL CARE	7
MAINTENANCE	8
CONSERVATION EDUCATION	10
PROGRAMS.....	10
STARR’S CAVE NATURE CENTER UPGRADES.....	11
VOLUNTEERS	12
LAND STEWARDSHIP.....	13
ADMINISTRATION.....	14
FACTS AND FIGURES.....	16
BIG HOLLOW SHOOTING RANGE	16
CAMPING.....	17
CONSERVATION EDUCATION.....	19
FINANCIAL STATEMENT.....	22
ORGANIZATIONAL CHART.....	27
EMPLOYEE DIRECTORY.....	28
BOARD MEMBER DIRECTORY.....	29
CONSERVATION BOARD MEETINGS.....	29

Executive Summary

Conservation departments such as ours do a lot. We provide places to camp and fish and play outside. We offer programs that teach about the wonders of nature and engage young and old alike in exploring the natural world around them. We apply sound land management to make sure there is a natural world for future generations to explore. It's a lot for one small department to do for sure.

This year's numbers are impressive. We had more campers stay in our campgrounds this year than in any year prior. This is the third year in a row camping numbers have increased and trends within the RV industry indicate that's likely to continue. We're managing more acres and helping more landowners than in the past. We acquired 235 acres of public land this year increasing the number of outdoor recreation acres we offer by 15%. Nature center visitation was also the highest we've ever seen and our education program and participant numbers are not far from record setting.

But doing more costs more. Our expenses were up significantly this year, largely due to that three-quarter-million dollar land purchase. However, every penny of that purchase was covered by grants and donations so even though our expenses were up, so were our revenues.

Doing so much raises the question of quantity versus quality. Over the past couple years our focus has been shifting not just toward doing a lot of things, but doing them well. Sure it feels good to drop nearly a million bucks to buy some additional public land, but it's extra satisfying when you can make that purchase without a single penny from the local tax base. It's great offering a ton of educational programs, but it's even better to amend the curriculum or partner with other groups to make sure those events are high quality learning experiences. It's one thing to offer a number of places to play outdoors but those places need to meet the increasing quality expectations of the people that visit them.

So as we go forward, our focus will continue to be on quality. We'll move forward with campground and education program improvements. Knowing that we cannot manage every acre in the county, we'll focus our land management efforts where they'll have the biggest ecological impact. And we'll continue to seek ways to be more efficient with our time and funds.

As the saying goes, it's not worth doing if you're not going to do it right. For us, conservation is something that's definitely worth doing so we'll continue striving to do it better. You'll have to visit our parks and attend our programs to find out if we got it right or not.

See you outside,



Chris Lee, Executive Director
Des Moines County Conservation

YEAR AT A GLANCE

The county's park system grew by 235 acres via the acquisition of the Leopold Recreation Area after roughly seven years of grant writing and fundraising. The \$775,156 expense was completely funded by grants and donations and increased the amount of public land offered by the county by 15%.

Just shy of 4,000 campers stayed in Des Moines County Conservation campgrounds, a new record. The number of campers staying in DMCC parks has now been increasing for three consecutive years.

A new park entrance sign was installed at Big Hollow Recreation Area. Additional park improvements included raising two berms at the shooting range and installing a solar panel and lights at the Off-Grid Cabin.

That cabin at Big Hollow saw a 265% increase in rentals. It was rented out nearly 70% of all available nights, including weeknights.

Des Moines County Conservation offered a total of 327 educational programs throughout the year to 13,971 participants. Though program participant numbers were down some, nature center visitation was up significantly with 13,642 visitors recorded.

Volunteers helped scrape, prime and paint Starr's Cave Nature Center, completing in three days what would have taken staff two weeks to do. Following that project, major interior renovations began on the building's ground floor with the replacement of the flooring, lights, windows and bathrooms and the framing of a new office area.

George Gruenther was recognized as the 2014 Volunteer of the Year and the Youth Jamboree Committee was awarded the 2014 Volunteer Group of the Year.

DMCC applied habitat management practices to nearly 700 acres and provided land management consultation and/or assistance to 150 landowners.

Several staff changes took place this year: John Mercer joined the DMCC crew first as Conservation Technician in August then as Park Ranger after completing the Iowa Law Enforcement Academy in April. Alex Buhmeyer was hired as the new Operations Supervisor in November and Frances Owen became the department's Naturalist in April.

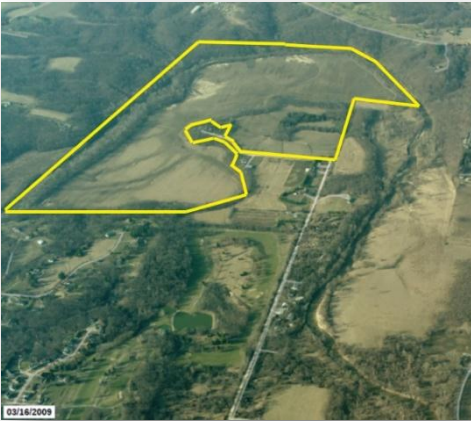
DMCC spent nearly \$800,000 in grant funding, mostly on the acquisition of the Leopold Recreation Area. More than half of the \$1.65 million spent by the department this year came from grants, donations or park-generated revenues.

Outdoor Recreation

Des Moines County Conservation staff and volunteers work tirelessly to keep the county's parks and conservation areas maintained and open to the public. In addition to the regular maintenance required, they often take on additional projects to improve, enhance, or expand outdoor recreation opportunities for the public. Some of those projects are highlighted here.

Leopold Recreation Area

After roughly seven years of grant writing and fundraising, Des Moines County Conservation finally closed on the purchase of the 235 acre



Leopold Recreation Area on the north edge of Burlington at the end of Mill Dam Road. The addition of these acres increased the county's public land by 15%.

The Leopold Recreation Area was purchased entirely with grants and donations for \$775,156. Funding sources included the Iowa DOT Scenic Byways Program, Land and

Water Conservation Fund, REAP,

Partners for Conservation Foundation, Pheasants Forever, the Witte Foundation and other local contributions. Iowa Natural Heritage Foundation executed the initial purchase and held the property until DMCC could raise the funds to finalize the purchase by the county.

The property officially opened to the public in March 2015 with a ribbon cutting ceremony. It is now open to public hunting and other outdoor recreation activities. A number of natural resource management efforts will take place on the property in the coming years. These projects will be combined with education programs in an effort to show the public how proper land management can be applied to lands in Des Moines County.



Mission Statement

"Des Moines County

Conservation is dedicated

to the sustainability of

natural resources through

land stewardship,

conservation education,

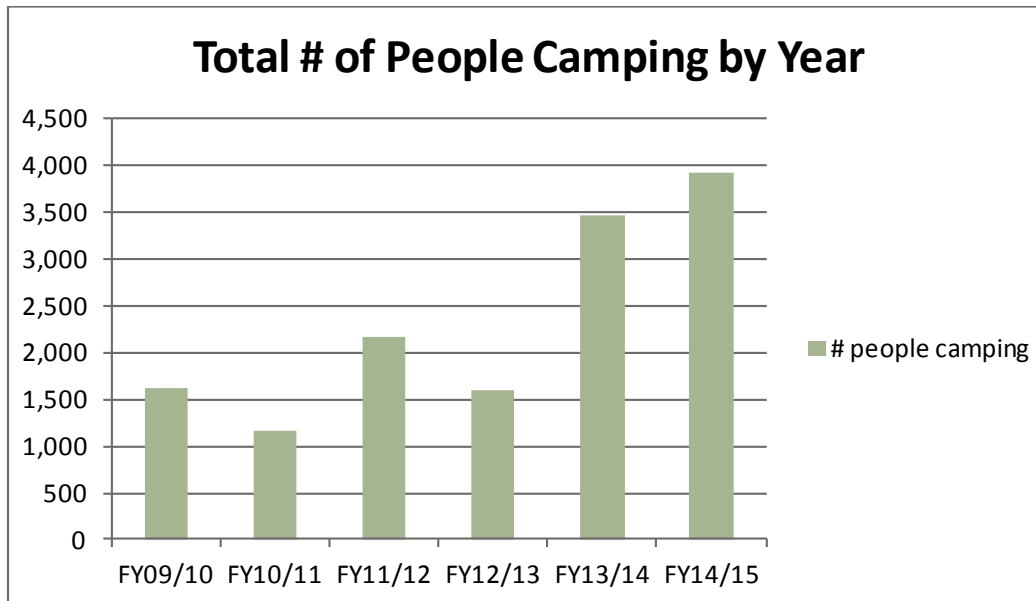
and by providing quality

outdoor recreation

opportunities."

Record Camping Numbers

A record number of campers – just shy of 4,000 – stayed in Des Moines County campgrounds this year, continuing a now three year trend. The 3,930 campers this year represent a 13% increase over last fiscal year. Every campground saw roughly the same percentage increase in the number of campers this year indicating an overall increase in camping in general rather than a large spike in visitors to just one park.



Market research and industry analysis show some trends in RV use and ownership that may explain this trend. Nearly nine million US households own RVs and surveys indicate that a full 21 percent of US households expect to purchase an RV in the future. The year 2014 saw the highest RV ownership of all time and the industry is expected to grow as more members of the Baby Boomer generation – the largest and fastest growing RV owner demographic – take up the activity. Furthermore, research shows that RVing is significantly less expensive than other, more “traditional” vacations. A family of four can realize a 23-59 percent savings by vacationing via RV.

RVing remains popular even despite fluctuating fuel costs. Surveys during times of rising fuel prices revealed that though 58 percent of RVers stated their travel plans would be affected by higher fuel prices, only 7 percent said it would cause them to camp less. Research shows that more than 90 percent of RVers take three or more short “mini” vacations per year. They’re spending less time on the road and more time enjoying campgrounds.

Big Hollow Park Improvements

Park improvements continued at Big Hollow Recreation Area this year with the installation of a new park entrance sign. With the assistance of Meyer's Landscaping, much of it volunteered, the sign and limestone landscaping were installed along with a cedar shake roof and solar powered accent lights.



Improvements were also completed at the shooting range with the 100 yard and 300 meter range berms being raised between five and eight feet in height. The project was completed in spring of 2015 and included the placement of approximately 10,000 cubic yards of fill on the top, sides and back of the berms as well as the installation of new fencing and new gravel walkways. The project cost approximately \$30,000 and was funded entirely from user fees collected from shooting range members over the years.



The cabin at Big Hollow also received an upgrade with the installation of a solar panel and battery system that now powers an LED light in each room. The cabin's front door was also replaced by volunteer Kevin Moore and his family. The "Off-Grid Cabin" continues to be popular with those looking for a quiet weekend away from it all. With the exception of one hot weekend in August, the cabin was rented out every available weekend this entire fiscal year and many of the weekdays. In fact, the 146 nights the

cabin was rented out this year represents 68% of all available nights (the cabin is only available April – October). It's also a 265% increase in the number of rented nights over last year.

Trail Care

Des Moines County Conservation, in partnership with Goodwill of the Heartland received a grant from the Iowa DOT to hire a trail crew through the Urban Youth Corps program. The crew spent most of the summer tending to the department's extensive trail system repairing washouts and cutting away storm damaged trees.



Goodwill
OF THE
Heartland

Currently, Des Moines County Conservation maintains over 23 miles of trails throughout the county.

Park/Area	Miles of off-road trail
Big Hollow Recreation Area	10.3
Flint River Trail	6.2
Hunt Woods	2.3
Luckenbill Woods	2.2
Starr's Cave Park and Preserve	2.2
Total	23.2 miles

Maintenance

In addition to regular park and facility maintenance and improvement projects, the department's four-person field staff at Big Hollow handles virtually all of the maintenance and upkeep of the department's equipment, areas and facilities.

Des Moines County Conservation Asset Summary

- 76 total parks/areas (includes 57 FEMA buyout areas)
- 1,881 total acres
- 16 buildings
- 21 restrooms
- 15 shelter houses
- One cabin
- Six campgrounds
 - 128 total campsites
 - 66 electric campsites
 - 62 primitive campsites
- Six boat ramps
- Six boat docks; two fishing piers
- 18 parking lots (all gravel or natural surface)
- 10 pedestrian bridges
- 23 miles of trail
 - 6.2 miles gravel surface
 - 0.3 miles paved
 - Remainder are natural surface
- One shooting range complex with four ranges
- 23 pond/lake dams
- One beach
- One playground
- 12 park entrance signs
- 100 wood duck boxes
- 8 goose nesting structures
- 36 bluebird boxes

Des Moines County Conservation Properties



DMCC's website was also updated this year to offer improved GIS mapping capabilities. Now, every property's webpage has a link to an interactive GIS map. The system offers useful functions including measurement and location tools and links to park information. Additional features and functionality will be added in the future.

Des Moines County Conservation Properties

		Acres	Camping	Electrical Hook Ups	Water	Restrooms	Picnicking	Shelter House(s)	Fishing	Hunting	Boating Access	Bicycle Trails	Hiking Trails
1	Big Hollow Recreation Area	798	*	*	*	*	*	*	*	*	*		*
2	Starr's Cave Park & Preserve	180			*	*	*	*					*
3	4 th Pumping Plant Recreation Area	6	*	*	*	*	*	*	*		*		
4	Welter Recreation Area	79	*	*	*	*	*	*	*	*	*		
5	Hickory Bend Conservation Area	175								*			
6	Flint River Trail	36										*	*
7	Hawkeye Dolbee Mississippi River Access	10							*		*		
8	Casey Barrow Landing (Mississippi River Access)	2					*	*	*		*		
9	Tama Beach Mississippi River Access	2							*		*		
10	Sullivan Slough (Mississippi River Access)	22							*	*	*		
11	Edgewater Beach Mississippi River Access	1							*				
12	Chautauqua Park	10			*	*	*	*					
13	Waters Roadside Park	2			*	*	*						
14	Kevin J. Gahn Memorial Recreation Area	56					*	*	*				
15	Hunt Woods	58				*	*	*		*			*
16	Luckenbill Woods Refuge	76							*				*
17	Zion Schoolhouse	1				*							
18	Hoover Trail	30											*
19	Leopold Recreation Area	235							*	*			
20	Buyout Properties (57 individual parcels, no public access)	102											
	Total Acres	1881											

Conservation Education

DMCC's Conservation Education division continues to offer many outdoor learning opportunities and services to the public.

Programs

Annual programs include an owl prowl, eagle watch, parent-tot classes, critter catch, nature at night, fishing events, open climbing wall days, cross country ski rentals, youth ice fishing clinics, the Outdoor Youth Jamboree, summer day camps, a concert series and more. Starr's Cave Nature Center is available to the general public for rental; the facilities are also open to local civic groups for monthly meetings and classes.

This year, total of **327 educational programs** were offered throughout the year to **13,971 participants**. That's a record number of programs but 1,272 fewer participants than last year's record setting attendance. However, nature center visitation increased by 28% over last year with a record-setting 13,642 visitors to the facility this year.

Several new programs were offered this year. They included:

- A monthly "Paddle in the Park" event in which DMCC staff lead guided canoe tours of Big Hollow Lake
- "The Archaeology of Iowa" presentation by University of Iowa archaeologist, William E. Whittaker
- "Edible Landscape" program led by Backyard Abundance
- Hosted a new traveling tall grass prairie exhibit and presented a number of pollinator-focused programs
- An improved and expanded "Critter Catch" program in partnership with *Water Rocks* and Iowa State University at which attendance quadrupled from last year
- An improved "Owl Prowl" in partnership with McBride Raptor Center



Mission Statement

"Des Moines County Conservation is dedicated to the sustainability of natural resources through land stewardship, **conservation education**, and by providing quality outdoor recreation opportunities."

Starr's Cave Nature Center Upgrades



Major renovations began on Starr's Cave Nature Center this year spurred by a \$50,000 pledge from the Harry and Virginia Murray Foundation and increasing nature center visitation. The upgrades began in earnest with a "Barn Painting Party" in October where over 20 volunteers donated over 150 hours of labor to

completely scrape, prime and repaint the exterior of the barn that now serves as the nature center. Local businesses including Diamond Vogel Paint, Subway, Standard of Beaverdale and Walmart donated to the effort. A project that took staff two weeks to complete last time took

only three days this time around thanks to the hard working volunteers.



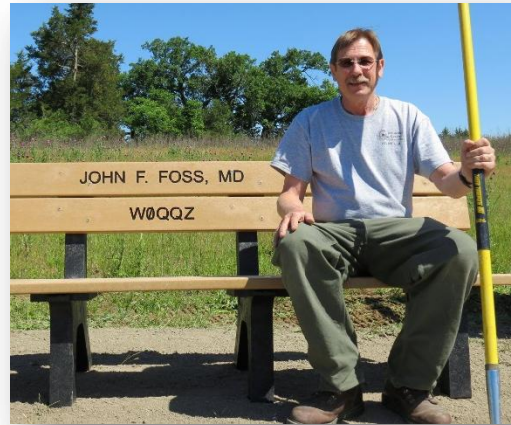
Once the exterior work was complete, focus shifted to the building's interior. The building's ground level received all new flooring and stair treads. The restrooms were completely remodeled with all new plumbing, floors, walls and fixtures. New electric service was installed and high efficiency lighting replaced the aging light fixtures throughout. New energy

efficient windows replaced the old drafty ones, exterior walls were insulated and new walls were put up which will eventually contain the relocated staff office. Work was put on hold then to accommodate the busy field trip and summer camp season. Work will resume later in 2015 with the finishing and relocation of the staff office. Future work will focus on upgrading the second floor to a new, updated exhibit area.

Volunteers

DMCC Volunteers were recognized during the annual volunteer dinner in January.

George Gruenther was recognized as volunteer of the year for his continued support and dedication to the department. George has volunteered with the department's field crew practically every Friday for two years and regularly assists with prescribed burns and other projects, even on weekends.



The Youth Jamboree Committee was recognized as Volunteer Group of the Year for their planning and hosting of the annual Youth Jamboree which attracts approximately 500 youth and 1,000 total participants to Big Hollow every spring. Rick and Renee Baker were later honored with a Mayor's Volunteer Award at the Community Volunteer Alliance's award banquet for their long-time involvement in organizing the Jamboree.

Volunteers continue to make an enormous impact with Des Moines County Conservation assisting with everything from weekly park maintenance to large nature center upgrade projects.

LAND STEWARDSHIP

Des Moines County Conservation applies sound land stewardship efforts on both public and private land throughout the county. From contracted planting services to landowner technical assistance, DMCC's land stewardship efforts are broad and diverse. Below are highlights of DMCC's land stewardship efforts in fiscal year 2014-2015.



Private Landowner Assistance

- Provided consultation and/or habitat management assistance to **150 landowners**
- Planted **240 acres of native grass** on 17 Conservation Reserve Program (CRP) projects
- Planted **15 acres of food plots**; gave out 30 acres of free food plot seed
- Assisted with **10 prescribed burns** totaling **100 acres**
- Planted **200 trees**
- Completed six mowing projects (pre/post-planting maintenance/firebreak installation) totaling **100 acres**

Public Land Habitat Management

- Completed **200 acres of prescribed burns**
- Planted **10 acres of pollinator habitat**; interseeded pollinator seed mixes on another five acres
- Conducted timber stand improvement (TSI) on **25 acres**
- Planted **200 trees and shrubs**
- Hosted a **Pollinator Field Day** with the Mediapolis 6th grade class where approximately eight acres of prairie was interseeded with pollinator seed at Luckenbill Woods.

Mission Statement

“Des Moines County Conservation is dedicated to the sustainability of natural resources through **land stewardship**, conservation education, and by providing quality outdoor recreation opportunities.”

In 2014, Des Moines County Conservation received a grant from the Iowa DNR Wildlife Diversity program to hire a Conservation Corps crew to assist with some intensive forest management at the park. Following a professionally drafted management plan, the five person crew of college students removed invasive species and conducted stand thinning operations on approximately 25 acres of timber near the RV campground. DMCC staff preceded and followed up the effort with prescribed fire application and additional thinning and invasive removal. The project will increase species diversity within the stand, benefit wildlife including the endangered Indiana bat and provide campers with better views of the lake below. DMCC was awarded the grant again in 2015 and will bring the crew back to continue the project in October.



ADMINISTRATION

Some new staff members joined Des Moines County Conservation this year. In August, John Mercer joined the team as Conservation Technician, a position left vacant when Jeremy Yost took over as Natural Resource Manager in June 2014. A Burlington native, John had previously been working water patrol at Lake Okoboji. In January, John left for the Iowa Law Enforcement Academy. After ILEA graduation in April, John re-joined the team as a certified Park Ranger.

Also in August DMCC bid farewell to Operations Supervisor JB Graham. After a long search, Alex Buhmeyer was selected to take over as field crew leader. Also a Burlington native, Alex and his family had been residing in Arizona where he worked in urban forestry. Alex officially joined the DMCC team in November.

Then in the spring, Katherine Brakeville resigned from her naturalist position at Starr's Cave Nature Center. Frances Owen was hired as the department's new naturalist in April. Originally from Dubuque, she had previously held seasonal naturalist positions at both Dickinson and Cerro Gordo County.

Dilan Beaird rejoined the field crew in 2015 as seasonal intern along with Ben Grooms. Kendra Van Pelt also joined the education staff as naturalist intern at Starr's Cave Nature Center this year.

Big Hollow Development

Significant focus this year was put toward Des Moines County Conservation's plans to construct modern shower and restroom facilities at the RV campground at Big Hollow. Currently, Big Hollow offers no modern restroom facilities (only vault toilets) and no dump station for campers

to empty their waste tanks as they exit the park. Constructing these facilities would accommodate the current and projected increase in park visitation and offer park users a higher quality outdoor recreation experience. This year Des Moines County Conservation set the ambitious goal of raising \$400,000 to complete those projects in time for the 2017 camping season. Of that amount, it is estimated that about \$168,000 will have to come from local fundraising efforts.

Potential Funding Sources	
Local fundraising (foundations, individual donations)	\$168,000
Land and Water Conservation Fund Grant (will apply for in 2016)	\$150,000
Park revenue	\$60,000
Des Moines County Conservation REAP Fund	\$22,000
Total	\$400,000

The department is working with the Partners for Conservation Foundation on local fundraising efforts. Long term goals for Big Hollow include the construction of up to four full-amenity lakefront cabins, a concession stand and restroom facility at the beach/boat ramp area and continued natural resource management and trail improvements.



Flint River Trail Development

Planning and project administration also progressed on the next section of the Flint River Trail which will connect Highway 61 to Irish Ridge Road by way of Starr's Cave Park and Preserve. Preliminary studies and permitting were completed and design plans are progressing. Construction on this section of trail may begin as early as 2016. Southeast Iowa Regional Planning Commission is assisting the county with project and grant administration.



FACTS AND FIGURES

Big Hollow Shooting Range

Memberships

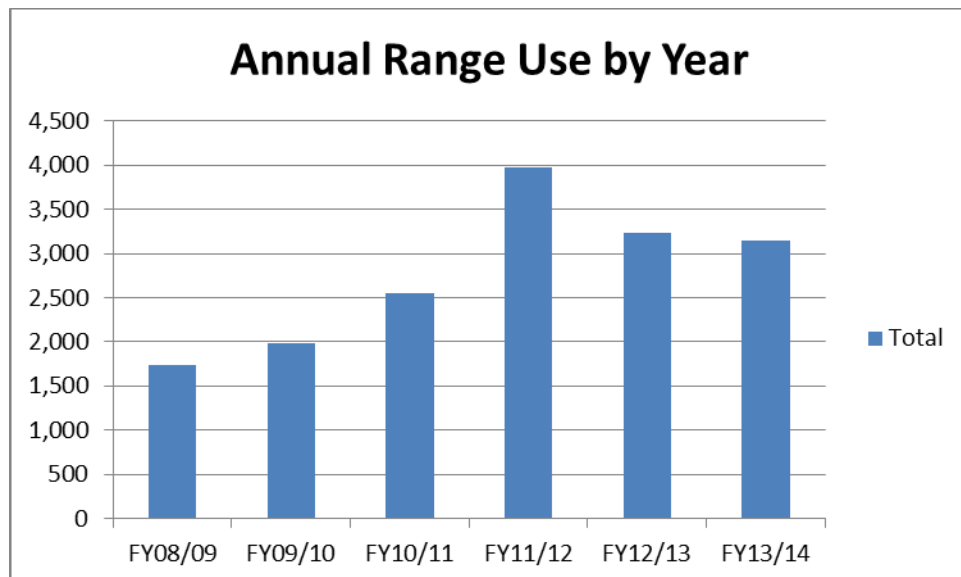
Range Membership

	Life Members	Family	Single	New Family	New Single	Total Paid
FY 11/12	2	208	332	94	89	725
FY 12/13	2	299	410	81	95	885
FY 13/14	2	301	348	74	76	799
FY 14/15	2	328	290	108	88	816

Range Use

Shooting Range Use By Month

	Jul	Aug	Sep	Oct	Nov	Dec	Jan	Feb	Mar	Apr	May	Jun	Total
FY10/11	233	225	206	277	254	112	95	88	255	282	274	247	2,548
FY11/12	212	303	419	371	324	304	195	197	390	480	383	394	3,972
FY12/13	323	361	489	236	282	209	180	148	197	247	209	358	3,239
FY13/14	372	423	367	296	213	216	109	34	253	289	287	286	3,145
FY14/15	349	354	330	261	238	235	148	68	282	249	310	274	3,098
Average	298	333	362	288	262	215	145	107	275	309	293	312	3,200



Camping

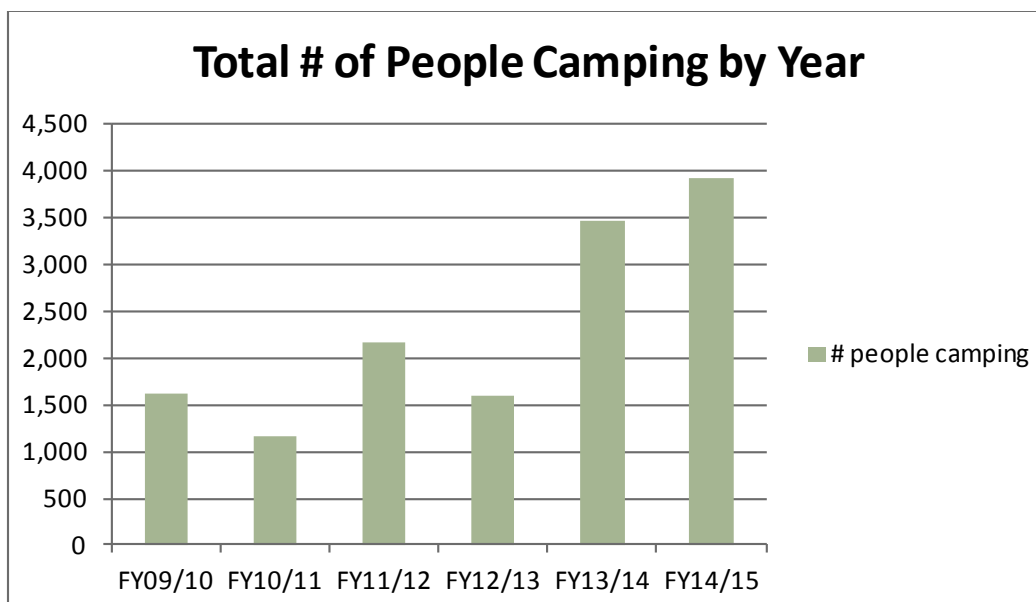
Over nearly 4,000 individuals spent 3,027 camping party nights in DMCC parks in FY2015. A 'camping party night' is defined as one group of people camping in one campsite for one night.

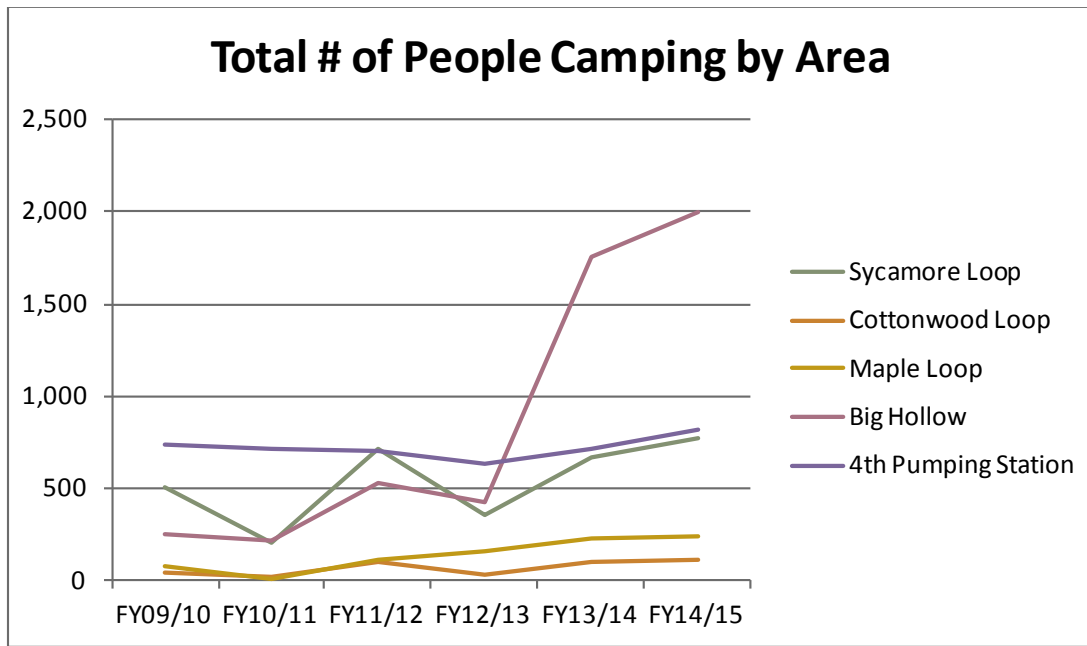
Campground Usage - Total camping nights

Campground	FY13/14	FY14/15
Sycamore Loop	613	722
Cottonwood Loop	57	50
Maple Loop	128	78
Big Hollow	1,131	1,401
4th Pumping Station	767	776
Big Hollow Cabin	41	146
Total	2,737	3,173

Campground Usage by Year - # of People Camping

Campground	FY09/10	FY10/11	FY11/12	FY12/13	FY13/14	FY14/15
Sycamore Loop	508	206	719	358	669	768
Cottonwood Loop	38	14	99	36	103	111
Maple Loop	81	6	115	157	231	238
Big Hollow	251	211	526	419	1,759	2,000
4th Pumping Station	737	717	706	628	714	813
Totals	1,615	1,154	2,165	1,598	3,476	3,930





Conservation Education

Environmental Education Programs and Attendance

FY 2014/15

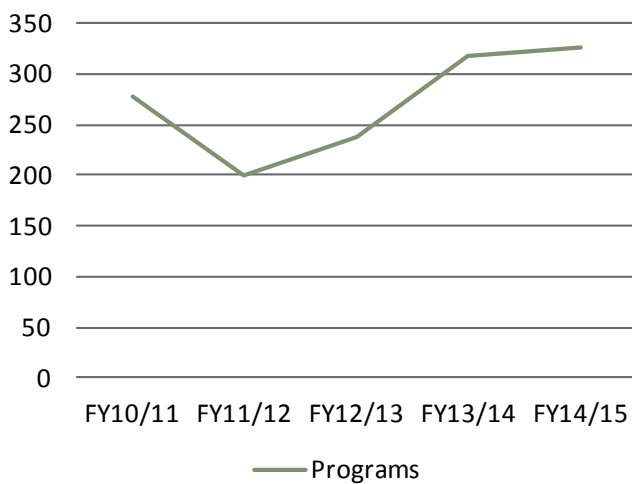
		July	Aug	Sept	Oct	Nov	Dec	Jan	Feb	Mar	Apr	May	Jun	Total
Pre – K	Programs	1		7	6	6	4	7	10	11	8	5	1	66
	Participants	15		146	119	167	128	212	326	318	186	191	15	1823
1 st – 2 nd	Programs			7	5	5	4	6	6	5	6	7		51
	Participants			384	215	265	190	302	297	271	287	405		2616
3 rd – 5 th	Programs			8	9	7	6	5	5	3	3	3		49
	Participants			265	486	284	243	215	199	118	132	89		2031
6 th – 8 th	Programs		1	2	9	3	1		3	3	1	3		26
	Participants		57	212	574	193	142		60	175	147	220		1780
9 th – 12 th	Programs								3	1	2	1		7
	Participants								37	30	211	20		298
Home School	Programs			1	1		1			1	1	1		6
	Participants			25	18		15			30	22	20		130
Care Centers	Programs			2	1		1			1			1	6
	Participants			47	11		9			12			13	92
Youth Groups	Programs	3	3	5	4	5	1	7	5	6	8	3	1	51
	Participants	65	158	122	235	148	23	169	118	114	175	94	12	1433
Civic Groups	Programs			1				1		3	1		1	7
	Participants			25				25		145	20		20	235
Public	Programs	2	4	3	1	1		2	2	2	5	3	5	30
	Participants	64	86	62	35	30		227	139	90	674	1206	219	2832
Professional	Programs		1											1
	Participants		175											175
Hunter/Range	Programs		2		1			1		2		1		7
	Participants		49		20			50		80		25		224
Camps	Programs	9	1										8	18
	Participants	108	12										96	216
Volunteer	Programs				1			1						2
	Participants				21			65						86
TOTAL	Programs	15	12	36	38	27	18	30	34	38	35	27	17	327
	Participants	252	537	1,288	1,734	1,087	750	1,265	1,176	1,383	1,854	2,270	375	13,971

Program & Participant Analysis

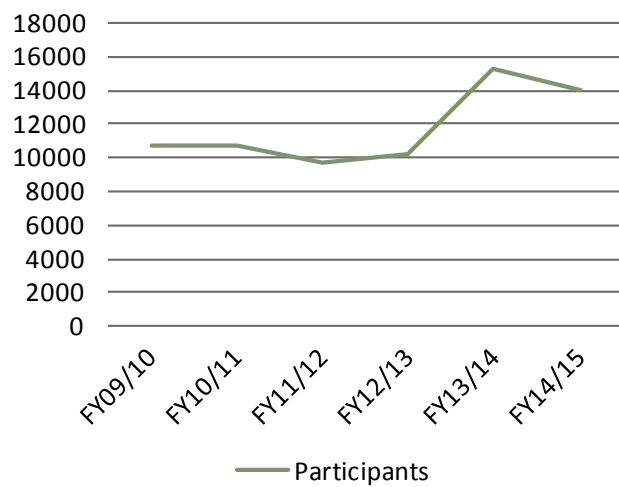
FY2014/15

	Programs		Participants	
	# of Programs	+/- change from previous FY	# of Participants	+/- change from previous FY
Preschool – K	66	-4	1823	-546
1st – 2nd	51	14	2616	522
3rd – 5th	49	-4	2031	-683
6th – 8th	26	5	1780	144
9th – 12th	7	5	298	241
Home Schools	6	2	130	37
Care Centers	6	-10	92	-137
Youth Groups	51	-3	1433	76
Civic Groups	7	3	235	77
Public	30	-2	2832	-684
Professional Training	1	0	175	-175
Hunter/Range Safety	7	-1	224	-129
Camps	18	3	216	-41
Volunteers	2	1	86	26
Totals	327	9	13,971	-1,272

Number of Programs



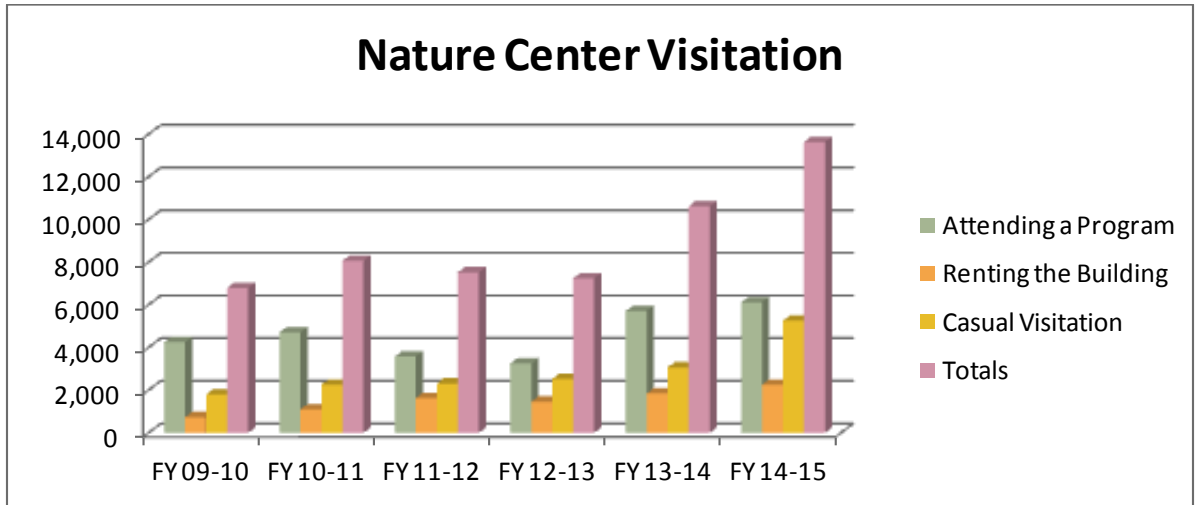
Number of Participants



Starr's Cave Nature Center Visitation

FY2010-2015

Type of visitation	FY 09-10	FY 10-11	FY 11-12	FY 12-13	FY 13-14	FY 14-15
Attending a Program	4,259	4,713	3,580	3,252	5,706	6,116
Renting the Building	737	1,095	1,635	1,465	1,850	2,263
Casual Visitation	1,801	2,262	2,315	2,532	3,067	5,263
Totals	6,797	8,070	7,530	7,249	10,623	13,642



Financial Statement

Revenue

General Basic Fund		
Account		Revenues
0001-1-22-6110-412000	BOAT TITLES	\$1,480.00
0001-1-22-6110-520031	CAMP FEES-AREA 1 LOWER AUGUSTA	\$8,184.00
0001-1-22-6110-520034	CAMP FEES-AREA 4 LOWER AUGUSTA	\$344.00
0001-1-22-6110-520037	CAMP FEE-WELTER REC PARK	\$522.00
0001-1-22-6110-520039	CAMP FEE-4TH PUMPING PLANT REC	\$6,049.00
0001-1-22-6110-523045	REC FACILITY RENT-STARR'S CAVE N	\$700.00
0001-1-22-6110-523047	REC FACILITY RENT-SHELTERS	\$50.00
0001-1-22-6110-612000	RENTALS-EQUIPMENT & MACHINERY	\$421.00
0001-1-22-6120-529000	PROGRAM FEES	\$170.00
0001-1-22-6120-810000	DONATIONS	\$130,000.00
0001-3-22-6110-265000	MISCELLANEOUS OR OTHER GRANTS	\$365,000.00
0001-3-22-6110-265600	LAND AND WATER CONS FUND GRANTS	\$150,000.00
0001-4-22-6110-848065	MISC REIMB-REFUNDS	\$610.59
Grand Total		\$663,530.59

REAP Fund		
Account		Revenue
0023-2-22-6110-846067	REAP GRANTS-CONTR-EQUAL SHARE	\$9,653.00
0023-2-22-6110-846068	REAP GRANTS-CONTR-PER CAPITA	\$12,542.00
0023-4-22-6110-600000	INTEREST ON INVESTMENTS	\$159.54
Grand Total		\$22,354.54

Conservation Reserve Fund		
Account		Revenue
0027-1-22-6110-441021	SHOOTING RANGE CERTIFI-NEW	\$4,685.00
0027-1-22-6110-441022	SHOOTING RANGE CERTIFI-RENEWALS	\$19,585.00
0027-1-22-6110-520000	CABIN RENTALS	\$1,950.00
0027-1-22-6110-520038	CAMP FEE-BIG HOLLOW CREEK	\$18,701.00
0027-1-22-6110-520041	CAMP FEE-MISC RELATED TO CAMP	\$2,293.94
0027-1-22-6110-523046	REC FACILITY RENT-EXCLUSIVE USE	\$485.00
0027-1-22-6110-523047	REC FACILITY RENT-SHELTERS	\$185.00
0027-1-22-6110-847000	MISCELLANEOUS REIMB	\$2,683.77
0027-1-22-6110-847064	MISC REIMB-PLANTING SERVICES	\$6,914.25
Grand Total		\$57,482.96

Expenditures

General Basic					
Account Number		Adjusted Appropriation	Expenditures	Balance	Prct Used
0001-22-0210-000-42360	CONSULTATIONS & SURVEYS	\$10,000.00	\$13,400.00	-\$3,400.00	134.00
0001-22-0210-000-60110	PARK AREA	\$645,000.00	\$645,000.00	\$0.00	100.00
0001-22-6100-000-10010	ADMINISTRATORS/EXEC DIRECTOR	\$51,200.00	\$50,999.26	\$200.74	99.61
0001-22-6100-000-10050	CORR OFF/P RNGR/OFC MGR/CIV ATTY	\$44,160.00	\$43,990.18	\$169.82	99.62
0001-22-6100-000-10200	LONGEVITY	\$1,900.00	\$1,900.00	\$0.00	100.00
0001-22-6100-000-12600	CONSERVATION BOARD	\$600.00	\$8.84	\$591.16	1.47
0001-22-6100-000-26000	OFFICE SUPPLIES	\$2,000.00	\$1,632.06	\$367.94	81.60
0001-22-6100-000-26100	MAGAZINES/PERIODICALS & BOOKS	\$600.00	\$666.00	-\$66.00	111.00
0001-22-6100-000-26200	DATA PROCESSING SUPPLIES	\$2,500.00	\$1,870.23	\$629.77	74.81
0001-22-6100-000-29400	WEARING APPARREL & UNIFORMS	\$600.00	\$374.92	\$225.08	62.49
0001-22-6100-000-40000	OFC PUBLICATIONS & LEGAL NOTCS	\$700.00	\$524.01	\$175.99	74.86
0001-22-6100-000-40200	TYPE PRINT & BIND SERVICES	\$500.00	\$520.29	-\$20.29	104.06
0001-22-6100-000-41200	POSTAGE & MAILING	\$2,500.00	\$1,753.03	\$746.97	70.12
0001-22-6100-000-41400	TELECOMMUNICATIONS SRVS	\$4,000.00	\$2,322.18	\$1,677.82	58.05
0001-22-6100-000-42210	SCHOOL OF INSTRUCTION	\$2,000.00	\$2,221.35	-\$221.35	111.07
0001-22-6100-000-44400	OFC & DATA P EQUIP REPR/MAINT	\$2,000.00	\$809.70	\$1,190.30	40.49
0001-22-6100-000-48000	DUES & MEMBERSHIPS	\$3,700.00	\$2,862.00	\$838.00	77.35
0001-22-6110-000-10020	DEPUTIES/ASSTS/INVESTI/FOREMAN	\$42,640.00	\$33,972.17	\$8,667.83	79.67
0001-22-6110-000-10030	CLERKS	\$35,260.00	\$34,742.74	\$517.26	98.53
0001-22-6110-000-10050	CORR OFF/P RNGR/OFC MGR/CIV ATTY	\$41,400.00	\$41,240.87	\$159.13	99.62
0001-22-6110-000-10070	NATURALIST/PARK TECH/RD BIOLOGIS	\$34,400.00	\$30,081.12	\$4,318.88	87.45
0001-22-6110-000-10100	TEMPORARY & PART TIME	\$17,280.00	\$16,250.63	\$1,029.37	94.04
0001-22-6110-000-10200	LONGEVITY	\$1,600.00	\$1,600.00	\$0.00	100.00
0001-22-6110-000-20200	CHEMICALS & GASES/HERBICIDES	\$1,000.00	\$794.81	\$205.19	79.48
0001-22-6110-000-20300	FERTILIZER & SEED	\$1,000.00	\$1,348.30	-\$348.30	134.83
0001-22-6110-000-20400	TREES & SHRUBS	\$500.00	\$188.99	\$311.01	37.80
0001-22-6110-000-21210	PARKS	\$8,000.00	\$9,281.38	-\$1,281.38	116.02
0001-22-6110-000-21400	TRAFFIC & ST SIGN MATERIALS	\$1,500.00	\$3,859.45	-\$2,359.45	257.30
0001-22-6110-000-21910	PARKS	\$10,000.00	\$5,973.09	\$4,026.91	59.73
0001-22-6110-000-21920	BOAT RAMPS	\$0.00	\$497.16	-\$497.16	0.00
0001-22-6110-000-21930	SHOPS	\$1,500.00	\$2,092.42	-\$592.42	139.49
0001-22-6110-000-21940	LOWER & UPPER AUGUSTA/WELTER	\$1,000.00	\$93.90	\$906.10	9.39
0001-22-6110-000-21950	STARRS CAVE NATURE CENTER	\$3,000.00	\$1,606.60	\$1,393.40	53.55
0001-22-6110-000-21980	RIVER CORRIDOR AREAS	\$2,000.00	\$1,380.00	\$620.00	69.00
0001-22-6110-000-21990	OTHER	\$1,500.00	\$285.70	\$1,214.30	19.05
0001-22-6110-000-23210	PARKS	\$2,000.00	\$1,672.23	\$327.77	83.61
0001-22-6110-000-23230	SHOPS	\$400.00	\$209.49	\$190.51	52.37
0001-22-6110-000-23250	STARRS CAVE NATURE CENTER	\$1,000.00	\$677.48	\$322.52	67.75
0001-22-6110-000-24000	NON-MV MACH & EQUIP HARDWARE/SUP	\$1,500.00	\$1,506.72	-\$6.72	100.45
0001-22-6110-000-25000	FUELS	\$22,000.00	\$18,302.76	\$3,697.24	83.19
0001-22-6110-000-25100	LUBRICANTS	\$1,000.00	\$1,115.75	-\$115.75	111.58
0001-22-6110-000-25400	MINOR MV PARTS & ACCESSORIES	\$500.00	\$175.89	\$324.11	35.18
0001-22-6110-000-26100	MAGAZINES/PERIODICALS & BOOKS	\$310.00	\$351.40	-\$41.40	113.35
0001-22-6110-000-26200	DATA PROCESSING SUPPLIES	\$880.00	\$935.58	-\$55.58	106.32
0001-22-6110-000-29000	MINOR EQUIPMENT & HAND TOOLS	\$1,000.00	\$1,016.50	-\$16.50	101.65
0001-22-6110-000-29300	SAFETY & PROTECTIVE SUPPLIES	\$2,000.00	\$1,335.32	\$664.68	66.77

GENERAL BASIC (Continued)		Adjusted			Prct
Account Number		Appropriation	Expenditures	Balance	Used
0001-22-6110-000-29302	LAW ENFORCEMENT SUPPLIES	\$1,250.00	\$547.60	\$702.40	43.81
0001-22-6110-000-29400	WEARING APPARREL & UNIFORMS	\$1,200.00	\$975.82	\$224.18	81.32
0001-22-6110-000-41450	STARRS CAVE NATURE CENTER	\$2,300.00	\$2,721.40	-\$421.40	118.32
0001-22-6110-000-41480	BHCRA SHOP	\$4,000.00	\$1,810.84	\$2,189.16	45.27
0001-22-6110-000-42210	SCHOOL OF INSTRUCTION	\$1,000.00	\$1,203.54	-\$203.54	120.35
0001-22-6110-000-42212	LAW ENFORCEMENT SCH INST	\$1,000.00	\$8,140.14	-\$7,140.14	814.01
0001-22-6110-000-43000	NATURAL & LP GAS	\$2,000.00	\$4,677.33	-\$2,677.33	233.87
0001-22-6110-000-43110	PARKS	\$6,200.00	\$7,311.20	-\$1,111.20	117.92
0001-22-6110-000-43120	BOAT RAMPS	\$225.00	\$21.92	\$203.08	9.74
0001-22-6110-000-43140	LOWER & UPPER AUGUSTA/WELTER	\$1,700.00	\$1,935.55	-\$235.55	113.86
0001-22-6110-000-43150	STARRS CAVE NATURE CENTER	\$4,000.00	\$3,658.71	\$341.29	91.47
0001-22-6110-000-43160	ELECTRIC-ADMIN	\$5,500.00	\$4,169.13	\$1,330.87	75.80
0001-22-6110-000-43200	WATER USE	\$350.00	\$620.00	-\$270.00	177.14
0001-22-6110-000-43210	PARKS	\$1,700.00	\$1,631.70	\$68.30	95.98
0001-22-6110-000-43240	LOWER & UPPER AUGUSTA/WELTER	\$725.00	\$659.80	\$65.20	91.01
0001-22-6110-000-43250	STARRS CAVE NATURE CENTER	\$425.00	\$383.24	\$41.76	90.17
0001-22-6110-000-43290	OTHER	\$400.00	\$516.00	-\$116.00	129.00
0001-22-6110-000-44000	MOTOR VEH EQUIP REPAIR/MAINT	\$4,000.00	\$4,693.15	-\$693.15	117.33
0001-22-6110-000-44130	SHOPS	\$0.00	\$671.66	-\$671.66	0.00
0001-22-6110-000-44150	STARRS CAVE NATURE CENTER	\$4,000.00	\$3,479.42	\$520.58	86.99
0001-22-6110-000-44160	HOUSES/TRAILER	\$4,500.00	\$6,219.03	-\$1,719.03	138.20
0001-22-6110-000-44300	OPER & CONSTR EQUIP REPAIR/MAINT	\$3,000.00	\$5,508.44	-\$2,508.44	183.61
0001-22-6110-000-44711	LAW ENFORCEMENT EQUIPMENT	\$1,000.00	\$1,581.43	-\$581.43	158.14
0001-22-6110-000-48320	CONTRACT MOWING	\$22,000.00	\$25,630.00	-\$3,630.00	116.50
0001-22-6110-000-49600	REFUND-PERMITS/LICENSES/DEPOSITS	\$0.00	\$75.00	-\$75.00	0.00
0001-22-6120-000-10070	NATURALIST/PARK TECH/RD BIOLOGIS	\$34,400.00	\$34,261.52	\$138.48	99.60
0001-22-6120-000-10090	OTHER/LT	\$32,000.00	\$36,732.92	-\$4,732.92	114.79
0001-22-6120-000-10100	TEMPORARY & PART TIME	\$4,400.00	\$3,312.00	\$1,088.00	75.27
0001-22-6120-000-26100	MAGAZINES/PERIODICALS & BOOKS	\$225.00	\$275.58	-\$50.58	122.48
0001-22-6120-000-29200	RECREATIONAL SUPPLIES	\$1,000.00	\$324.24	\$675.76	32.42
0001-22-6120-000-29400	WEARING APPARREL & UNIFORMS	\$600.00	\$569.82	\$30.18	94.97
0001-22-6120-000-29520	DEVELOPMENT/MATERIALS	\$1,000.00	\$977.59	\$22.41	97.76
0001-22-6120-000-29700	EE PROGRAM SUPPLIES	\$1,000.00	\$1,331.88	-\$331.88	133.19
0001-22-6120-000-40220	BROCHURES/PAMPHLETS	\$2,000.00	\$676.96	\$1,323.04	33.85
0001-22-6120-000-40600	NEWSLETTERS	\$1,000.00	\$1,525.33	-\$525.33	152.53
0001-22-6120-000-42210	SCHOOL OF INSTRUCTION	\$2,000.00	\$710.42	\$1,289.58	35.52
0001-22-6120-000-42940	MARKETING SERVICES	\$4,000.00	\$4,337.71	-\$337.71	108.44
0001-22-6120-000-44400	OFC & DATA P EQUIP REPR/MAINT	\$500.00	\$421.11	\$78.89	84.22
0001-22-6120-000-63830	EE EQUIPMENT	\$1,000.00	\$445.40	\$554.60	44.54
Grand Total		\$1,167,730.00	\$1,158,187.03	\$9,542.97	99.18

General Supplemental					
Account Number	Adjusted Appropriation	Expenditures	Balance	Prct Used	
0002-22-6100-000-11000 FICA	\$7,295.00	\$7,302.21	-\$7.21	100.10	
0002-22-6100-000-11100 IPERS	\$8,516.00	\$8,652.23	-\$136.23	101.60	
0002-22-6100-000-11300 GROUP INSURANCE	\$35,018.00	\$35,071.97	-\$53.97	100.15	
0002-22-6110-000-11000 FICA	\$12,812.00	\$11,967.94	\$844.06	93.41	
0002-22-6110-000-11100 IPERS	\$14,973.00	\$13,080.82	\$1,892.18	87.36	
0002-22-6110-000-11300 GROUP INSURANCE	\$78,791.00	\$50,737.78	\$28,053.22	64.40	
0002-22-6120-000-11000 FICA	\$5,410.00	\$5,440.15	-\$30.15	100.56	
0002-22-6120-000-11100 IPERS	\$5,930.00	\$5,467.90	\$462.10	92.21	
0002-22-6120-000-11300 GROUP INSURANCE	\$35,018.00	\$36,560.75	-\$1,542.75	104.41	
Grand Total	\$203,763.00	\$174,281.75	\$29,481.25	85.53	
REAP					
Account Number	Adjusted Appropriation	Expenditures	Balance	Prct Used	
0023-22-0210-000-60000 LAND	\$221,406.00	\$130,156.00	\$91,250.00	58.79	
Grand Total	\$221,406.00	\$130,156.00	\$91,250.00	58.79	
Conservation Reserve					
Account Number	Adjusted Appropriation	Expenditures	Balance	Prct Used	
0027-22-0210-000-42360 CONSULTATIONS & SURVEYS	\$10,000.00	\$0.00	\$10,000.00	0.00	
0027-22-0210-000-60110 PARK AREA	\$75,000.00	\$70,697.78	\$4,302.22	94.26	
0027-22-0220-000-62810 BHCRA/PERM IMPROVEMENTS	\$25,000.00	\$175.00	\$24,825.00	0.70	
Grand Total	\$110,000.00	\$70,872.78	\$39,127.22	64.43	
GO Bond					
Account Number	Adjusted Appropriation	Expenditures	Balance	Prct Used	
0017-22-0220-000-61020	\$125,616.00	\$125,615.97	\$0.03	100.00	
Grand Total	\$125,616.00	\$125,615.97	\$0.03	100.00	
Total 2015 Expenditures		\$1,659,113.53			

Grants

- **Iowa DOT Scenic Byways Grant:** \$365,000 toward purchase of Leopold Recreation Area
- **Land and Water Conservation Fund:** \$150,000 toward purchase of Leopold Recreation Area
- **REAP Grant:** \$130,156 toward purchase of Leopold Recreation Area. Funds came from REAP equal allocation distributions to DMCC over a number of years
- **Partners for Conservation Foundation:** \$110,000 toward purchase of Leopold Recreation Area. These dollars came from local fundraising efforts

- **Harry & Virginia Murray Foundation:** \$10,000 (of \$50,000 pledge) used for Starr's Cave Nature Center upgrades. Will be awarded in \$10,000 increments for four more years
- **Iowa Pheasants Forever Trust Fund:** \$20,000 used toward the purchase of the Leopold Recreation Area. This funding was made possible by a partnership with the Aldo Leopold Chapter of Pheasants Forever and the Partners for Conservation Foundation
- **Iowa DNR Wildlife Diversity Program:** \$5,000 used to hire a Conservation Corps crew to perform forest management activities at Big Hollow. Grant renewed for FY16
- **Total grant funds expended in FY2015:** \$790,156

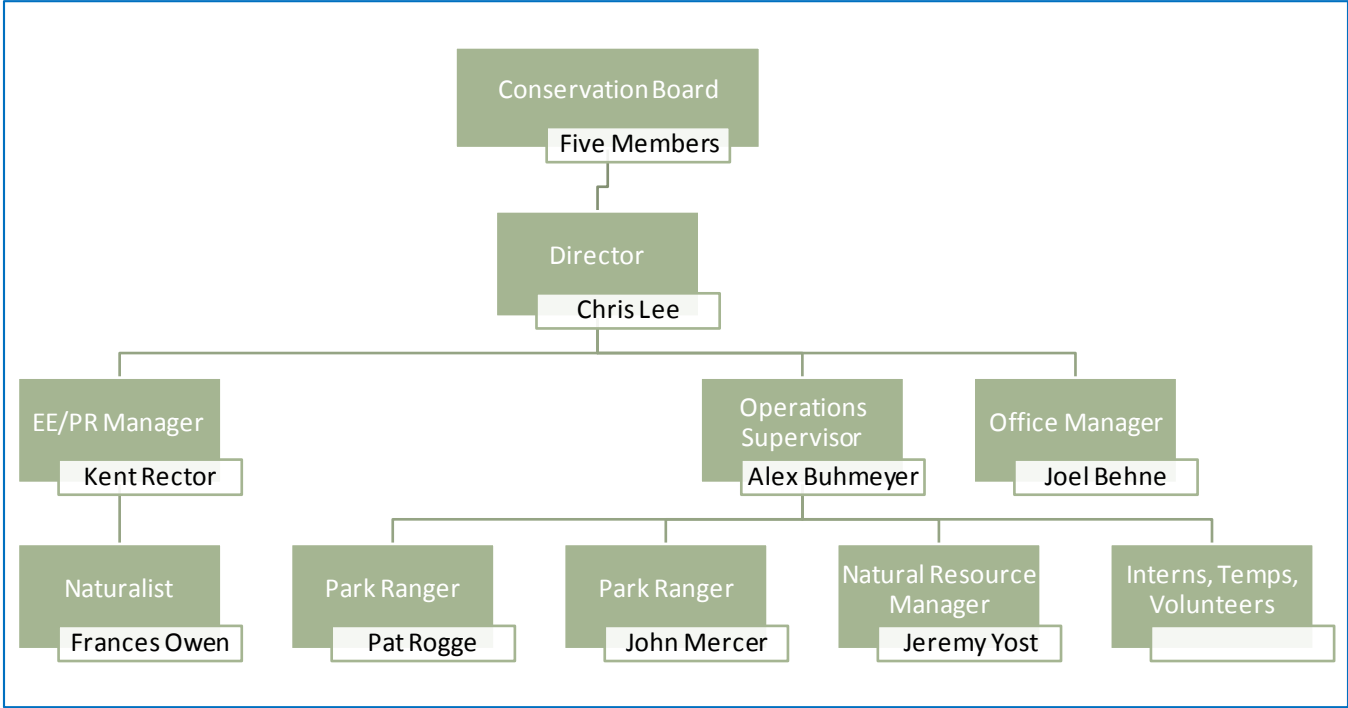
Financial Summary

This year, Des Moines County Conservation spent a total of \$1,659,113.53 from all accounts and brought in \$743,368.09 in revenues from all sources.

Though expenditure numbers looked large this year, so were revenues. In fact, Des Moines County Conservation's net expenditures (expenditures minus revenues) from General Basic only totaled \$494,656.44. In other words, of the nearly \$1.2 million DMCC spent out of the General Basic Fund this year, less than 43% of it actually came from the tax base. The rest came from grants, donations and user fees.

Though Des Moines County Conservation expended over \$1.65 million this year, \$790,156 were grant funds. The \$70,872.78 expended from Conservation Reserve on Big Hollow was generated completely from park revenue. All told, more than half of the department's expenditures this year (52%) were from non-tax sources.

Organizational Chart



Employee Directory

Position	Employee	Work Address	Phone(s)
Director	Chris Lee	Main Office 13700 Washington Rd. West Burlington, IA 52655 leec@dmcounty.com	(319) 753-8260 (319) 572-1564
Office Manager	Joel Behne	Main Office 13700 Washington Rd. West Burlington, IA 52655 dmconbd@dmcounty.com	(319) 753-8260
Operations Supervisor	Alex Buhmeyer	Maintenance Shops 18836 Ranger Ln. Sperry, IA 52650 buhmeyera@dmcounty.com	(319) 985-2502
Park Ranger	Pat Rogge	Maintenance Shops 18836 Ranger Ln. Sperry, IA 52650 roggep@dmcounty.com	(319) 985-2502 (319) 759-4779
Park Ranger	John Mercer	Maintenance Shops 18836 Ranger Ln. Sperry, IA 52650 mercervj@dmcounty.com	(319) 985-2502 (319) 572-5445
Natural Resource Manager	Jeremy Yost	Maintenance Shops 18836 Ranger Ln. Sperry, IA 52650 yostj@dmcounty.com	(319) 985-2502 (319) 572-6865
Environmental Education/Public Relations Coordinator	Kent Rector	Starr's Cave Nature Center 11627 Starr's Cave Rd. Burlington, IA 52601 rectork@dmcounty.com	(319) 753-5808 (319) 768-8057
Naturalist	Frances Owen	Starr's Cave Nature Center 11627 Starr's Cave Rd. Burlington, IA 52601 owenf@dmcounty.com	(319) 753-5808

Board Member Directory

Position	Name	Term Expires
Chair	James E. Steer	12/31/2018
Vice-Chair	James Garnjobst	12/31/2016
Secretary/Treasurer	LaVon L. Worley	12/31/2017
Member	Angela Vaughan	12/31/2015
Member	Cathy Ziglar	12/31/2019

Conservation Board Meetings

- July 2, 2014
- August 6, 2014
- September 3, 2014
- October 1, 2014
- November 6, 2014
- November 25, 2014*
- December 3, 2014
- January 6, 2015
- February 4, 2015
- March 4, 2015
- April 1, 2015
- May 6, 2015
- June 3, 2015

*Indicates special meetings or work sessions outside of normal monthly meetings.