

# FY 2015-2016 Annual Report

*JULY 1, 2015 TO JUNE 30, 2016*



*Chris Lee, Executive Director*  
*Des Moines County Conservation*  
*13700 Washington Rd.*  
*West Burlington, IA 52655*  
*(319) 753-8260*  
*[www.dmcconservation.com](http://www.dmcconservation.com)*

*Des Moines County Conservation is dedicated to the sustainability of natural resources through land stewardship, conservation education, and by providing quality outdoor recreation opportunities.*

## Table of Contents

<b>TABLE OF CONTENTS.....</b>	<b>2</b>
<b>EXECUTIVE SUMMARY .....</b>	<b>3</b>
<b>YEAR AT A GLANCE .....</b>	<b>4</b>
<b>OUTDOOR RECREATION .....</b>	<b>5</b>
CAMPGROUNDS.....	5
TRAILS .....	6
PARKS.....	7
SHOOTING RANGE.....	8
MAINTENANCE .....	9
<b>CONSERVATION EDUCATION .....</b>	<b>11</b>
PROGRAMS.....	11
STARR’S CAVE NATURE CENTER UPGRADES.....	13
VOLUNTEERS.....	17
<b>LAND STEWARDSHIP .....</b>	<b>18</b>
PRIVATE LANDOWNER ASSISTANCE.....	18
PUBLIC LAND HABITAT MANAGEMENT .....	18
<b>ADMINISTRATION .....</b>	<b>19</b>
<b>FINANCIAL STATEMENT .....</b>	<b>21</b>
<b>ORGANIZATIONAL CHART .....</b>	<b>24</b>
<b>EMPLOYEE DIRECTORY.....</b>	<b>25</b>
<b>BOARD MEMBER DIRECTORY .....</b>	<b>26</b>
<b>CONSERVATION BOARD MEETINGS .....</b>	<b>26</b>

## Executive Summary

A couple years back, Des Moines County Conservation embarked on what the staff came to affectionately call our “vision quest” during which we scrutinized our operations against our mission statement and asked ourselves how we can best deliver our mission to the citizens and visitors of this county. Eventually, we developed a document that broke our mission statement down into three component parts – Land Stewardship, Conservation Education, and Outdoor Recreation – and outlined an overall vision for each of those components. We then added in a fourth component, Department Administration, and developed a vision for it as well.

Once we had our overall vision for each component established, we then set specific goals and action plans for each to guide our efforts and keep us focused. The information contained within this report summarizes our efforts in executing those action plans and achieving those goals.

For example, our Vision for Land Stewardship states we will “lead by example in the management of lands, waters and facilities under our control.” This year we set a new department record in the number of acres planted with diverse native prairie seed mixes.

Our Vision for Conservation Education is focused on developing “an environmentally responsible community.” This year we developed a new strategic environmental education plan and focused on updating and modernizing our facilities, programs, materials and curriculum to better deliver conservation education to our students and the public.

Our Vision for Outdoor Recreation is to “create and maintain places to go that provide and encourage public participation in outdoor recreation.” On that front, we saw the opening of the North Gorge Trail and secured funding for the development of modern amenities at the Big Hollow RV campground.

And finally, our Vision for Department Administration focuses on efficiency and fiscal responsibility while providing “the highest level of customer service.” We ended the year within one percent of our total budget allocation while still seeing improvements and expansions to our parks.

So now, a year into our finished plan, we’ve made good progress toward our goals. But we recognize there’s still much to do. We’ll keep at it and we look forward to seeing where the future takes us. We hope you do to.

See you outside,

A handwritten signature in black ink, appearing to read 'Chris Lee', with a long horizontal flourish extending to the right.

Chris Lee, Executive Director  
Des Moines County Conservation

## YEAR AT A GLANCE

For the fourth year in a row, camping numbers in Des Moines County campgrounds increased. This year, 1,439 camping parties totaling 4,574 people stayed 4,079 camping nights in the county's three campgrounds. The number of people staying in the county's campgrounds was up 16% over last year, setting yet another record.

The North Gorge Trail, a single-track trail at the edge of Burlington, was added to the county's trail system. The mile or so of trail that is complete so far was built almost entirely by volunteers and is quite likely the most enjoyable of any public trail routes in the county.

Environmental education staff delivered a total of 271 educational programs to 12,325 participants. They also developed a new five-year strategic plan for its environmental education division and began working on implementing a number of the plan's concepts. The core of the plan focuses on implementing a "Three-Point Approach" which blends all aspects of outreach and programming into one integrated experience.

The summer camp registration process was also modernized to an all web-based registration system called CampDoc. The number of camp spots was also increased by 25 percent to meet the public's high demand.

Continuing the work that began last year, the renovations to the first floor of the nature center were completed resulting in fully remodeled bathrooms and a new staff office right inside the building's main entrance.

DMCC staff set a new planting record with over 500 acres of native grasses and wildflowers planted on private land alone. Additional land management efforts included over 160 acres of prescribed burns, planting 1,600 trees and shrubs, and conducting timber stand improvement and invasive species removal in 24.7 acres of forest.

The federal Land and Water Conservation Fund awarded DMCC a \$150,000 grant which will make possible the construction of a dump station and associated wastewater infrastructure at the Big Hollow RV campground. DMCC plans to start construction on the project in 2017.

## Outdoor Recreation

Des Moines County Conservation staff and volunteers work tirelessly to keep the county's parks and conservation areas maintained and open to the public. In addition to the regular maintenance required, they often take on additional projects to improve, enhance, or expand outdoor recreation opportunities for the public. Some of those projects and the results of those efforts are highlighted here.

### Campgrounds

For the third year in a row, camping numbers in Des Moines County campgrounds increased. This year, 1,439 camping parties totaling 4,574 people stayed 4,079 camping nights in the county's three campgrounds. The number of people staying in the county's campgrounds was up 16% over last year, setting yet another record. This increase occurred despite the fact that the department closed the seven-site Cottonwood Loop at Welter Recreation Area at the beginning of the year.

#### Campground Usage - Total camping nights

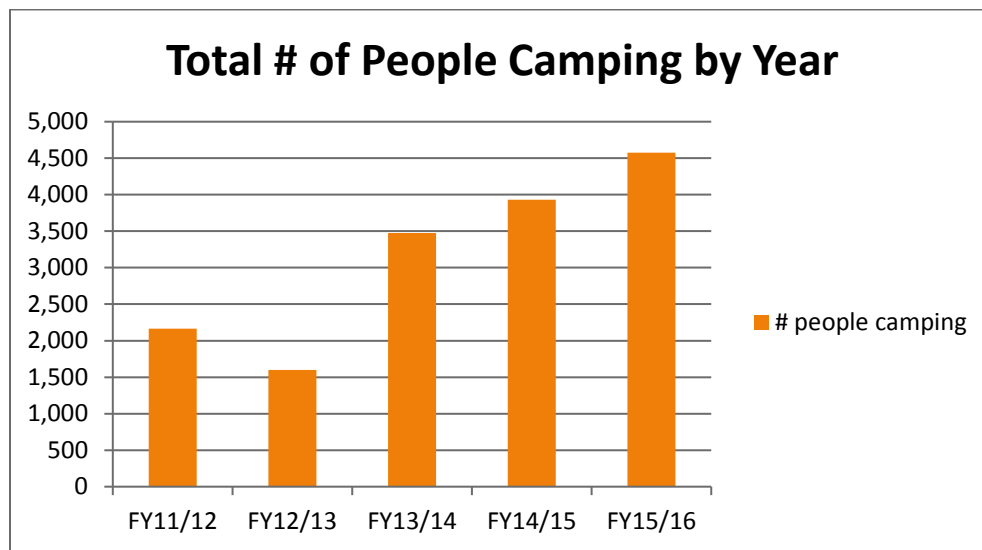
Campground	FY13/14	FY14/15	FY15/16
Sycamore Loop	613	722	1,058
Cottonwood Loop	57	50	10
Maple Loop	128	78	206
Big Hollow	1,131	1,401	1,712
4th Pumping Station	767	776	936
Big Hollow Cabin	41	146	157
<b>Total</b>	<b>2,737</b>	<b>3,173</b>	<b>4,079</b>

### Mission Statement

"Des Moines County Conservation is dedicated to the sustainability of natural resources through land stewardship, conservation education, and by providing quality outdoor recreation opportunities."

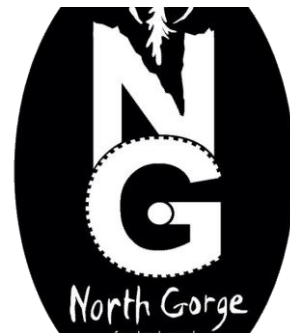
### Campground Usage by Year - # of People Camping

Campground	FY10/11	FY11/12	FY12/13	FY13/14	FY14/15	FY15/16
Sycamore Loop	206	719	358	669	768	866
Cottonwood Loop	14	99	36	103	111	23
Maple Loop	6	115	157	231	238	395
Big Hollow	211	526	419	1,759	2,000	2,263
4th Pumping Station	717	706	628	714	813	1,027
<b>Totals</b>	<b>1,154</b>	<b>2,165</b>	<b>1,598</b>	<b>3,476</b>	<b>3,930</b>	<b>4,574</b>



### Trails

The crowning achievement of this year's trail efforts is undoubtedly the addition of the North Gorge Trail to the county's trail system. A cooperative project between Des Moines County Conservation, the City of Burlington and a number of volunteers, North Gorge is located right across the road from the fifth hole at Flint Hills Golf Course. The brand new trail system zig-zags back and forth across the face of steep bluffs overlooking the Flint Creek valley just above the county's Leopold Recreation Area. The location makes for some stunning views through wooded bluffs overlooking the creek's vast floodplain below. The mile or so of trail that is complete so far was built almost entirely by volunteers and is quite likely the most enjoyable of any public trail routes in the county.



Major improvements to the Flint River Trail were completed this year with the addition of parking areas at the north and south end of the completed trail section. The south parking area, along North Prairie Grove Road just north of Flint Bottom Road was constructed with a geo-web material which allows the parking area to be seeded to grass but prevents rutting from vehicles (see photo to right). The north parking area, on the south side of Big Hollow Recreation Area just off of Dodgeville Road



was designed to accommodate trailers and may be expanded in the future to accommodate equestrian traffic. And finally, the previously unfinished section of trail near Hickory Bend along 155<sup>th</sup> St. was completed. The mud road was regraded, graveled and surfaced the same as the rest of the trail. What resulted was a mostly continuous trail, with only a few share-the-road sections, from Flint Bottom Road to the south end of Big Hollow.

For the second year, Des Moines County Conservation, in partnership with Goodwill of the Heartland received a grant from the Iowa DOT to hire a trail crew through the Urban Youth Corps program. The crew spent most of the summer tending to the Flint River Trail repairing washouts and putting finishing touches on the new parking areas.

Currently, Des Moines County Conservation maintains over 24 miles of trails throughout the county.

Park/Area	Miles of off-road trail
Big Hollow Recreation Area	10.3
Flint River Trail	6.2
Hunt Woods	2.3
Luckenbill Woods	2.2
North Gorge Trail	1.5
Starr's Cave Park and Preserve	2.2
<b>Total</b>	<b>24.7 miles</b>

## Parks

Significant improvements were again made to Big Hollow Recreation Area with upgrades completed to the interior of the Off-Grid Cabin and a new roof on the 100 yard shooting range shelter. Staff also started on the construction of the Big Hollow park information kiosk and donor recognition wall.

## Shooting Range

Membership and usage of the Big Hollow shooting range remains consistent with over 800 members visiting the range nearly 3,500 times this year.

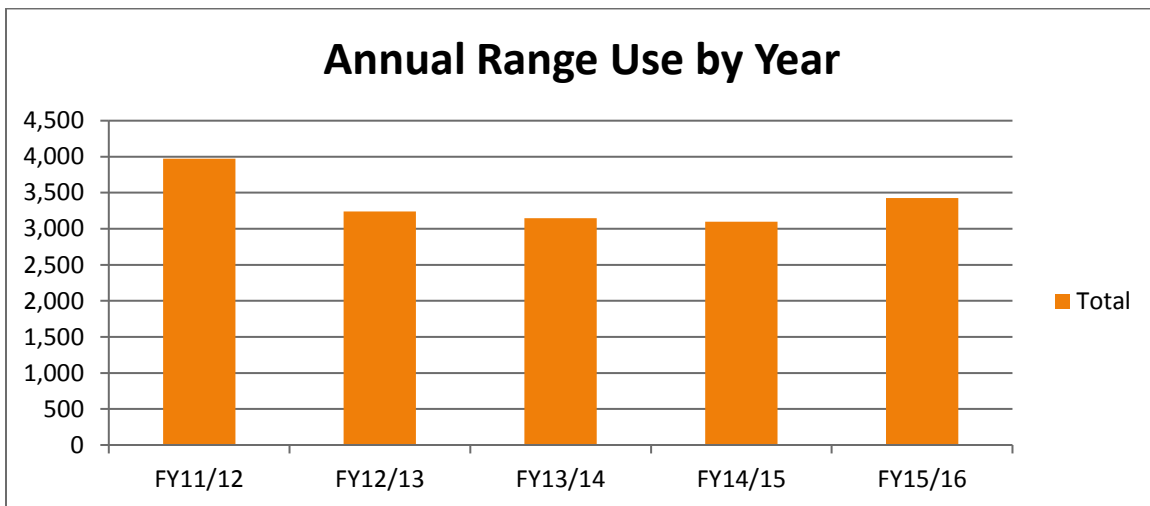
### Memberships

	Life Members	Family	Single	Total Paid
<b>FY11/12</b>	2	208	332	725
<b>FY12/13</b>	2	299	410	885
<b>FY13/14</b>	2	375	424	799
<b>FY14/15</b>	2	436	378	816
<b>FY15/16</b>	3	421	400	824

### Range Use

#### Shooting Range Use By Month

	Jul	Aug	Sep	Oct	Nov	Dec	Jan	Feb	Mar	Apr	May	Jun	Total
<b>FY11/12</b>	212	303	419	371	324	304	195	197	390	480	383	394	<b>3,972</b>
<b>FY12/13</b>	323	361	489	236	282	209	180	148	197	247	209	358	<b>3,239</b>
<b>FY13/14</b>	372	423	367	296	213	216	109	34	253	289	287	286	<b>3,145</b>
<b>FY14/15</b>	349	354	330	261	238	235	148	68	282	249	310	274	<b>3,098</b>
<b>FY15/16</b>	382	354	350	289	204	271	179	181	293	277	287	358	<b>3,425</b>
<b>Average</b>	328	359	391	291	252	247	162	126	283	308	295	334	<b>3,376</b>





## Maintenance

In addition to regular park and facility maintenance and improvement projects, the department's four-person field staff at Big Hollow handles virtually all of the maintenance and upkeep of the department's equipment, areas and facilities.

### Des Moines County Conservation Asset Summary

- 76 total parks/areas (includes 57 FEMA buyout areas)
- 1,917 total acres
- 16 buildings
- 21 restrooms
- 15 shelter houses
- One cabin
- Six campgrounds
  - 123 total campsites
  - 66 electric campsites
  - 57 primitive campsites
- Six boat ramps
- Six boat docks; two fishing piers
- 18 parking lots (all gravel or natural surface)
- 10 pedestrian bridges
- 24.7 miles of trail
  - 6.2 miles gravel surface
  - 0.3 miles paved
  - Remainder are natural surface
- One shooting range complex with four ranges
- 23 pond/lake dams
- One beach
- One playground
- 12 park entrance signs
- 100 wood duck boxes
- 8 goose nesting structures
- 51 bluebird boxes

## Des Moines County Conservation Properties

		Acres	Camping	Electrical Hook Ups	Water	Restrooms	Picnicking	Shelter House(s)	Fishing	Hunting	Boating Access	Bicycle Trails	Hiking Trails
1	Big Hollow Recreation Area	798	*	*	*	*	*	*	*	*	*		*
2	Starr's Cave Park & Preserve	180			*	*	*	*					*
3	4 <sup>th</sup> Pumping Plant Recreation Area	6	*	*	*	*	*	*	*		*		
4	Welter Recreation Area	79	*	*	*	*	*	*	*	*	*		
5	Hickory Bend Conservation Area	175								*			
6	Flint River Trail	36										*	*
7	Hawkeye Dolbee Mississippi River Access	10							*		*		
8	Casey Barrow Landing (Mississippi River Access)	2					*	*	*		*		
9	Tama Beach Mississippi River Access	2							*		*		
10	Sullivan Slough (Mississippi River Access)	22							*	*	*		
11	Edgewater Beach Mississippi River Access	1							*				
12	Chautauqua Park	10			*	*	*	*					
13	Waters Roadside Park	2			*	*	*						
14	Kevin J. Gahn Memorial Recreation Area	56					*	*	*				
15	Hunt Woods	58				*	*	*		*			*
16	Luckenbill Woods Refuge	76							*				*
17	Zion Schoolhouse	1				*							
18	Hoover Trail	30											*
19	Leopold Recreation Area	235							*	*			
20	North Gorge Trail (in partnership with City of Burlington)	36					*					*	*
21	Buyout Properties (57 individual parcels, no public access)	102											
	<b>Total Acres</b>	<b>1917</b>											

## Conservation Education

DMCC's Conservation Education division continues to offer many outdoor learning opportunities and services to the public.

### Programs

Annual programs include an owl prowl, eagle watch, parent-tot classes, critter catch, nature at night, fishing events, open climbing wall days, cross country ski rentals, youth ice fishing clinics, the Outdoor Youth Jamboree, summer day camps, a concert series and more. Starr's Cave Nature Center is available to the general public for rental; the facilities are also open to local civic groups for monthly meetings and classes.

This year, environmental education staff delivered a total of **271 educational programs** to **12,325 participants**. Starr's Cave Nature Center received 11,379 total visitors.

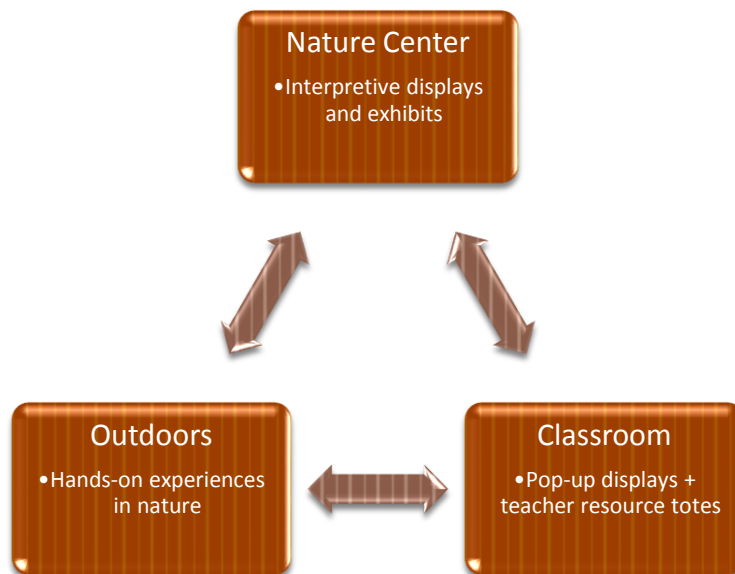


An additional 34 programs were delivered at the Witte Observatory at Big Hollow Recreation Area by volunteers from the Southeast Iowa Astronomy Club to 534 participants. That brings the total number of programs delivered through DMCC and its partners to 304 and the total number of participants to 12,859.

### Mission Statement

"Des Moines County Conservation is dedicated to the sustainability of natural resources through land stewardship, **conservation education**, and by providing quality outdoor recreation opportunities."

This year, Des Moines County Conservation developed a new five-year strategic plan for its environmental education division and began working on implementing a number of the plan's concepts. The core of the plan focuses on implementing a "Three-Point Approach" which blends all aspects of outreach and programming into one integrated experience. This approach delivers a consistent message to students within three environments: the classroom, the nature center, and the outdoors. The environmental education curriculum is delivered at one point in the classroom by DMCC staff or teachers using DMCC-provided guides. At a second point, the message is reinforced and taught more in-depth during a field trip to Starr's Cave or another DMCC park. The final point utilizes the dynamic displays and exhibits in the nature center itself to further reinforce the message during either active (educator-led) or passive (casual visit) study within the facility.



After developing the plan, much progress was made on updating curriculum materials, lesson plans and designs for new displays at the nature center.

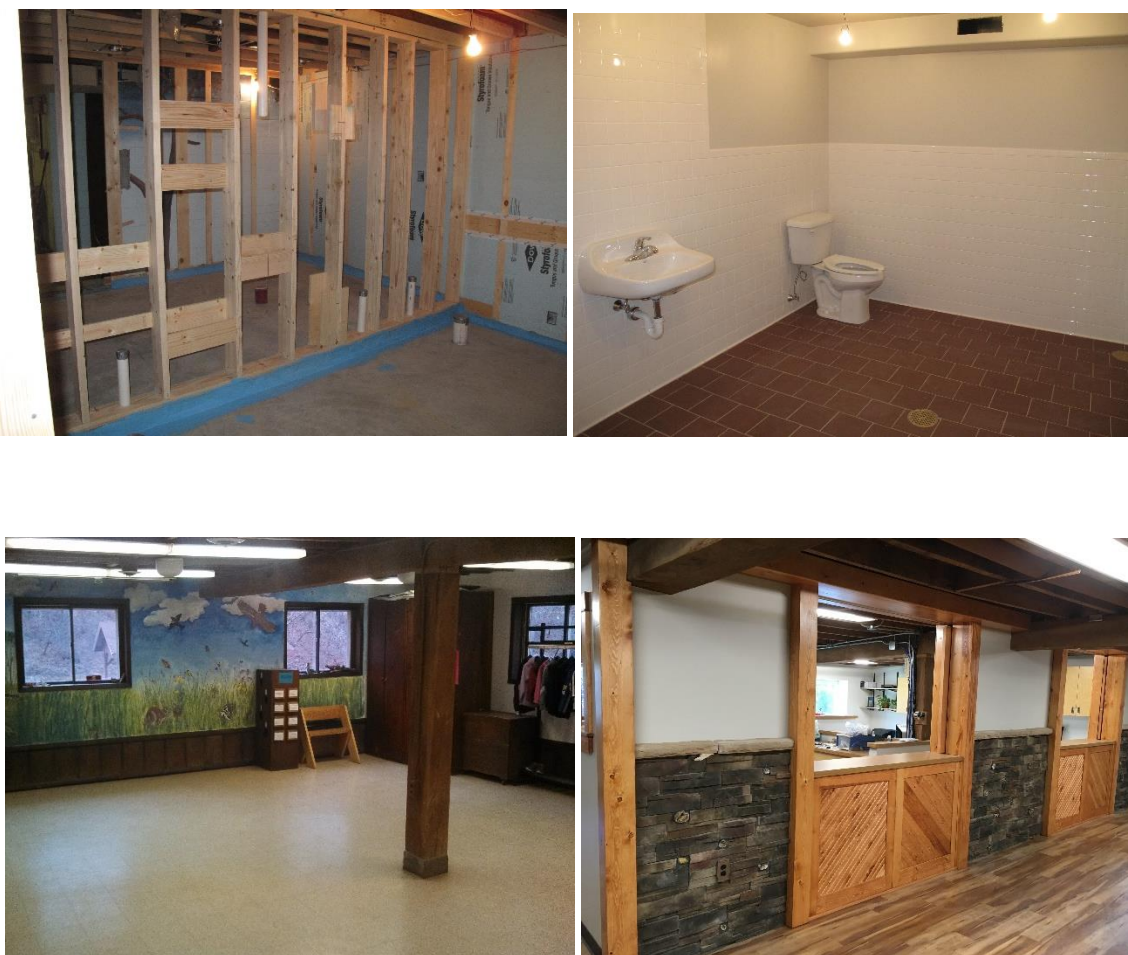


The summer camp registration process was also modernized to an all web-based registration system called CampDoc. The number of camp spots was also increased by 25 percent to meet the public's high demand. The 2015 summer camp sign up night saw people lining up at 9:00 AM for a 5:00 PM event. Registration for 2016 camps was done online and worked much better than the "stand-in-line-forever" method.

## Starr's Cave Nature Center Upgrades

Continuing the work that began last year, the renovations to the first floor of the nature center were completed resulting in fully remodeled bathrooms and a new staff office right inside the building's main entrance. The renovations were made possible by the second and third annual contributions (\$10,000/year) from a \$50,000 grant from the Harry and Virginia Murray Foundation.

The next phase of renovations will focus on updating the displays and exhibits on the second floor. Work on that phase will begin in late 2016 and carry over into 2017 and even 2018 if additional funding sources are secured.



## Environmental Education Programs and Attendance

## Environmental Education Programs and Attendance - FY 2015/16

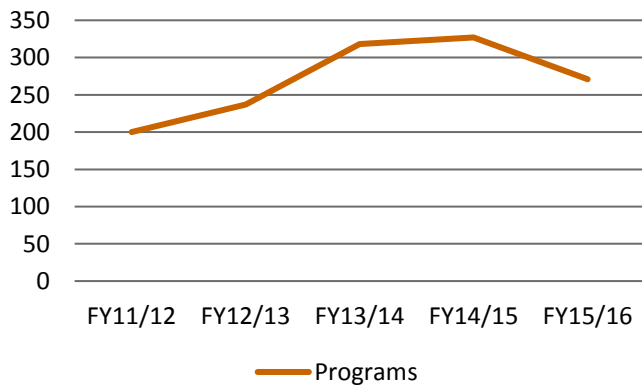
		July	Aug	Sept	Oct	Nov	Dec	Jan	Feb	Mar	Apr	May	Jun	Total
Pre – K	Programs	1	1	7	8	10	8	8	7	3	9	9	5	76
	Participants	16	20	229	304	329	265	280	262	120	405	405	212	2847
1 <sup>st</sup> – 2 <sup>nd</sup>	Programs			2	4	5	5		4	7		5		32
	Participants			115	198	265	250		189	327		258		1602
3 <sup>rd</sup> – 5 <sup>th</sup>	Programs			2	6	3	3		2	6	3	4		29
	Participants			137	301	208	235		90	493	154	242		1860
6 <sup>th</sup> – 8 <sup>th</sup>	Programs			1	2	1	1	2	1	4	2	2		16
	Participants			54	75	125	138	240	25	300	175	245		1377
9 <sup>th</sup> – 12 <sup>th</sup>	Programs				1							2		3
	Participants				20							31		51
Home School	Programs			2	1	1	1	1		1		1		8
	Participants			23	29	15	30	20		12		14		143
Care Centers	Programs	1	2	1	2	1					2			9
	Participants	9	27	10	46	35					40			167
Youth Groups	Programs	3	4	4	6	4	2	1	1	5	2	5	1	38
	Participants	90	309	93	94	76	40	10	11	98	28	87	12	948
Civic Groups	Programs			1						1		1		3
	Participants			25						29		10		64
Public	Programs	3	6	2	2	2		2	2	3	4	2	2	30
	Participants	245	166	85	75	80		115	110	135	418	1025	32	2486
Professional	Programs			1	1						1			3
	Participants			200	20						20			240
Hunter/Range	Programs		2		1				1			1	1	6
	Participants		65		35				65			50	35	250
Camps	Programs	8											9	17
	Participants	96											144	240
Volunteer	Programs							1						1
	Participants							50						50
<b>TOTAL</b>	<b>Programs</b>	<b>16</b>	<b>15</b>	<b>23</b>	<b>34</b>	<b>27</b>	<b>20</b>	<b>15</b>	<b>18</b>	<b>30</b>	<b>23</b>	<b>32</b>	<b>18</b>	<b>271</b>
	<b>Participants</b>	<b>456</b>	<b>587</b>	<b>971</b>	<b>1,197</b>	<b>1,133</b>	<b>958</b>	<b>715</b>	<b>752</b>	<b>1,514</b>	<b>1,240</b>	<b>2,367</b>	<b>435</b>	<b>12,325</b>

## Program & Participant Analysis

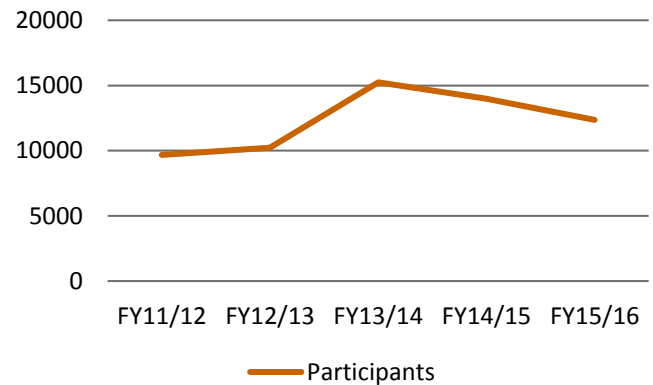
### Program and Participant Analysis 2015/2016

	Programs		Participants	
	# of Programs	+/- change from previous FY	# of Participants	+/- change from previous FY
<b>Preschool – K</b>	76	10	2,847	1034
<b>1<sup>st</sup> – 2<sup>nd</sup></b>	32	-19	1,602	-1014
<b>3<sup>rd</sup> – 5<sup>th</sup></b>	29	-20	1,860	-174
<b>6<sup>th</sup> – 8<sup>th</sup></b>	16	-10	1377	-403
<b>9<sup>th</sup> – 12<sup>th</sup></b>	3	-4	51	-247
<b>Home Schools</b>	8	2	143	13
<b>Care Centers</b>	9	3	167	75
<b>Youth Groups</b>	38	-13	948	-485
<b>Civic Groups</b>	3	-4	64	-171
<b>Public</b>	30	0	2,486	-346
<b>Professional Training</b>	3	2	240	65
<b>Hunter/Range Safety</b>	6	-1	250	26
<b>Camps</b>	17	-1	240	24
<b>Volunteers</b>	1	-1	50	-36
<b>Totals</b>	<b>271</b>	<b>-56</b>	<b>12,325</b>	<b>-1,639</b>

#### Number of Programs



#### Number of Participants



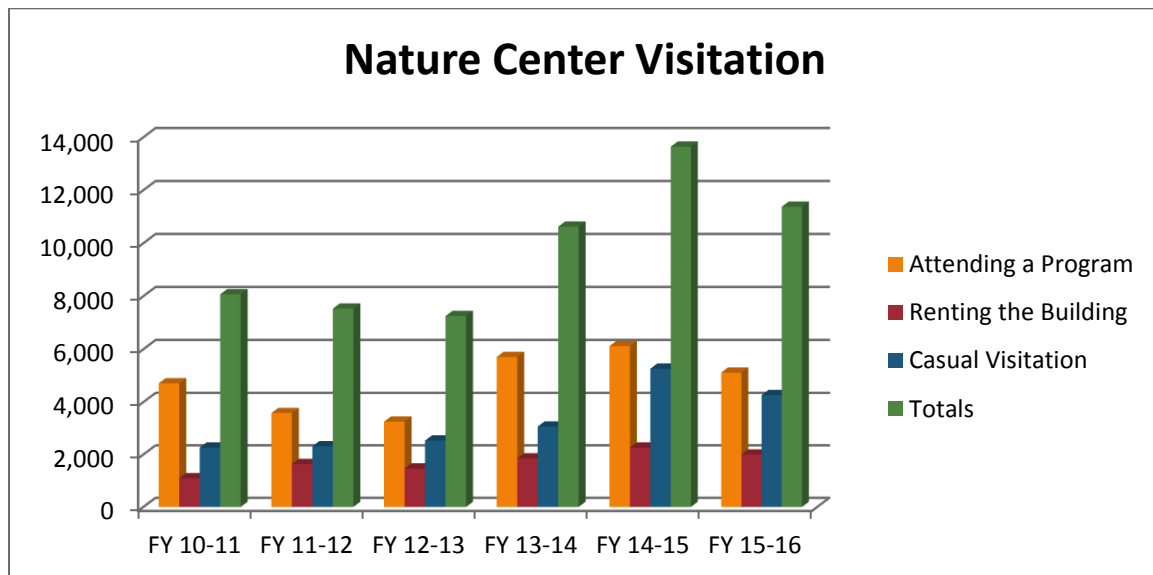


Program numbers were down noticeably this fiscal year for a number of reasons. First, staff cut back some on classroom programs to focus on the development of the strategic plan, nature center renovations, and updating existing programs and materials. Second, staff began focusing more on the quality of programs instead of just the quantity. In so doing, some programs were eliminated and replaced with new or expanded programs that provide participants with better, more in-depth instruction or more hands-on opportunities. Thus, the decline in program and participant numbers this year was expected.

### Starr's Cave Nature Center Visitation

Type of visitation	FY 10-11	FY 11-12	FY 12-13	FY 13-14	FY 14-15	FY 15-16
Attending a Program	4,713	3,580	3,252	5,706	6,116	5,116
Renting the Building	1,095	1,635	1,465	1,850	2,263	2,000
Casual Visitation	2,262	2,315	2,532	3,067	5,263	4,263
<b>Totals</b>	<b>8,070</b>	<b>7,530</b>	<b>7,249</b>	<b>10,623</b>	<b>13,642</b>	<b>11,379</b>

Nature center visitation was also down this year, as expected. The nature center was closed, or only open intermittently for a number of months while the renovations were being done.





## Volunteers

Des Moines County Conservation recognized the many volunteers that donated time and labor to their many outdoor programs at its annual Volunteer Dinner in January. Fifty volunteers were in attendance; each enjoyed a catered meal and a program highlighting the department's achievements over the past year. The event concluded with the presentation of the annual volunteer awards which included two new categories this year.

**Bill & Jan Lippert** were awarded Camper of the Year, a new award for this event. The Lipperts have camped in DMCC campgrounds since the early 1970s and now camp on average about 100-125 days per year. Adding it all up, they have likely spent over \$50,000 on camping in Des Moines County parks over four decades.

**Jessica Johnson** was recognized as Environmental Educator of the Year. After creating an after school nature club at Sunnyside Elementary, she took her efforts to the next level by expanding the program into its own nonprofit organization called Junior Explorer's League (JEL). She coordinated the curriculum with the nature center staff and makes weekly field trips to the nature center.

**Joe Stewart** was recognized as Volunteer of the Year for his continued commitment to the conservation field crew. Joe began volunteering to help with maintenance on the Flint River Trail in 2014 and ended up joining the field staff on a near-weekly basis in 2015. Joe logged over 100 hours of volunteer time with the DMCC field staff in 2015 alone, helping with nearly every aspect of DMCC maintenance and operations.



The Volunteer Group of the Year was awarded to **Meyer's Landscaping** for all of their work in the construction of the Big Hollow entry sign. They donated time and expertise to design and construct the giant limestone block base for the Big Hollow sign near the park's entrance.

The format and date for the Volunteer Dinner will change in 2016. Its date will move to August to better correspond with the

department's fiscal year and avoid any winter weather issues common to a January event. The location will also change to Burlington's Capitol Theater. The 2016 event will feature a pre-event social hour with drinks and appetizers followed by a Keynote speaker and an expanded awards ceremony and program.

## LAND STEWARDSHIP

Des Moines County Conservation applies sound land stewardship efforts on both public and private land throughout the county. From contracted planting services to landowner technical assistance, DMCC's land stewardship efforts are broad and diverse. Below are highlights of DMCC's land stewardship efforts in fiscal year 2015-2016.



### Private Landowner Assistance

- Provided consultation and/or habitat management assistance to **75 landowners**
- Planted a **department record-setting 520.5 acres of native grass and wildflowers** across 46 different projects, many of them focused on pollinators
- Rented out equipment to plant an additional 25 acres
- Planted **200 trees**
- Planted **5 acres of food plots**
- Conducted **prescribed burns** on **120 acres**

### Public Land Habitat Management

- Completed over **163 acres of prescribed burns**
- Planted **10 acres of food plots**
- Conducted forestry management on **24.7 acres**
- Planted **1,400 trees and shrubs**
- Hosted a **Field Day** with a Burlington 6<sup>th</sup> grade class from Edward Stone Middle School where they planted about 130 trees at the Leopold Recreation Area.

### Mission Statement

“Des Moines County Conservation is dedicated to the sustainability of natural resources through **land stewardship**, conservation education, and by providing quality outdoor recreation opportunities.”

For the second year in a row, Des Moines County Conservation received a grant from the Iowa DNR Wildlife Diversity program to hire a Conservation Corps crew to assist with some intensive forest management at the park. Following a professionally drafted management plan, the five person crew of college students removed invasive species and conducted stand thinning operations within the forests of Big Hollow. The project will increase species diversity within the stand, benefit wildlife including the endangered Indiana bat and provide visitors with better views of the lake. DMCC was awarded the grant for a third and final time in 2016 and will bring the crew back to continue the project in October.



## ADMINISTRATION

In the summer of 2016, Dilan Beaird rejoined the field crew for his fourth and probably final season as intern with the department. He was joined by Brayden Crew, a new intern, and Tanner Grimm who returned for his second season as summer intern. At Starr's Cave Nature Center, Brandon Nelson joined the team for his first post as the naturalist intern. Des Moines County Conservation was also awarded an Urban Youth Corps team for the second year in a row and for the first time ever, the department was awarded an AmeriCorps National Civilian Community Corps (NCCC) crew for trail work. The crew would focus on trail work at Big Hollow beginning in July. As such, their work will be included in next year's report.



### Big Hollow Development

Significant progress was made toward the development of modern amenities at the Big Hollow RV campground including a dump station, shower house and associated wastewater infrastructure. DMCC applied for, and was awarded a Land and Water Conservation Fund (LWCF) grant for the project. The \$150,000 that

the LWCF grant provides represents a critical component of the funding plan. Matched with dollars from the department's REAP and Conservation Reserve funds, the grant secures the full amount needed to construct the dump station and wastewater systems.

Significant progress was made also on the design of the planned shower house. Working with Klingner & Associates in Burlington, the design incorporates numerous green building components including passive lighting, geothermal ventilation and solar panels. The building will have a 30 foot roof extension on its west side to serve as a shelter house for group gatherings. While the LWCF funds and park revenue will build the dump station and infrastructure, over \$200,000 will still need to be secured from outside funding sources to construct the shower house. The Partners for Conservation Foundation launched a new fundraising campaign to raise the final amount needed to do the full suite of campground renovations at once.

Des Moines County Conservation expects to start construction on the project in 2017.



Engineer's rendering of proposed shower house. Perspective: South side from southwest corner.



## FINANCIAL STATEMENT

### Revenue

#### General Basic Fund

Account	Revenues
0001-1-22-6110-412000 BOAT TITLES	\$1,505.00
0001-1-22-6110-520031 CAMP FEES-AREA 1 LOWER AUGUSTA	\$10,598.00
0001-1-22-6110-520034 CAMP FEES-AREA 4 LOWER AUGUSTA	\$0.00
0001-1-22-6110-520037 CAMP FEE-WELTER REC PARK	\$1,489.00
0001-1-22-6110-520039 CAMP FEE-4TH PUMPING PLANT REC	\$10,611.00
0001-1-22-6110-523045 REC FACILITY RENT-STARR'S CAVE N	\$435.00
0001-1-22-6110-523047 REC FACILITY RENT-SHELTERS	\$220.00
0001-1-22-6120-529000 PROGRAM FEES	\$50.00
0001-1-22-6110-612000 RENTALS-EQUIPMENT & MACHINERY	\$35.00
0001-1-22-6120-839061 SALE OF NESTING BOXES	\$50.00
0001-4-22-6110-848065 MISC REIMB-REFUNDS	\$43.36
<b>Grand Total</b>	<b>\$25,036.36</b>

#### REAP Fund

Account	Revenue
0023-2-22-6110-846067 REAP GRANTS-CONTR-EQUAL SHARE	\$9,655.00
0023-2-22-6110-846068 REAP GRANTS-CONTR-PER CAPITA	\$12,568.00
0023-4-22-6110-600000 INTEREST ON INVESTMENTS	\$13.63
<b>Grand Total</b>	<b>\$22,236.63</b>

#### Conservation Reserve Fund

Account	Revenue
0027-1-22-6110-441021 SHOOTING RANGE CERTIFI-NEW	\$3,180.00
0027-1-22-6110-441022 SHOOTING RANGE CERTIFI-RENEWALS	\$21,075.00
0027-1-22-6110-520000 CABIN RENTALS	\$6,070.00
0027-1-22-6110-520038 CAMP FEE-BIG HOLLOW CREEK	\$23,099.53
0027-1-22-6110-520041 CAMP FEE-MISC RELATED TO CAMP	\$754.76
0027-1-22-6110-523046 REC FACILITY RENT-EXCLUSIVE USE	\$660.00
0027-1-22-6110-523047 REC FACILITY RENT-SHELTERS	\$705.00
0027-1-22-6110-847000 MISCELLANEOUS REIMB	\$105.60
0027-1-22-6110-847064 MISC REIMB-PLANTING SERVICES	\$38,777.82
<b>Grand Total</b>	<b>\$94,427.71</b>

## Expenditures

## General Basic

Account		Adjusted Appropriation	Expenditures	Balance	Prct Used
0001-22-0210-000-42360	CONSULTATIONS & SURVEYS	7,000.00	7,100.00	-100.00	101.43
0001-22-6100-000-10010	ADMINISTRATORS/EXEC DIRECTOR	52,480.00	52,397.72	82.28	99.84
0001-22-6100-000-10050	CORR OFF/P RNGR/OFC MGR/CIV ATTY	45,080.00	44,730.13	349.87	99.22
0001-22-6100-000-10200	LONGEVITY	1,900.00	1,900.00	0.00	100.00
0001-22-6100-000-12600	CONSERVATION BOARD	500.00	0.00	500.00	0.00
0001-22-6100-000-26000	OFFICE SUPPLIES	2,000.00	3,014.13	-1,014.13	150.71
0001-22-6100-000-26100	MAGAZINES/PERIODICALS & BOOKS	1,300.00	246.00	1,054.00	18.92
0001-22-6100-000-26200	DATA PROCESSING SUPPLIES	2,500.00	3,098.39	-598.39	123.94
0001-22-6100-000-29400	WEARING APPARREL & UNIFORMS	2,400.00	1,703.92	696.08	71.00
0001-22-6100-000-40000	OFC PUBLICATIONS & LEGAL NOTCS	600.00	200.91	399.09	33.49
0001-22-6100-000-40200	TYPE PRINT & BIND SERVICES	500.00	473.00	27.00	94.60
0001-22-6100-000-41200	POSTAGE & MAILING	1,000.00	0.00	1,000.00	0.00
0001-22-6100-000-41400	TELECOMMUNICATIONS SRVS	7,000.00	9,626.51	-2,626.51	137.52
0001-22-6100-000-42210	SCHOOL OF INSTRUCTION	5,000.00	4,497.12	502.88	89.94
0001-22-6100-000-44400	OFC & DATA P EQUIP REPR/MAINT	2,000.00	1,199.00	801.00	59.95
0001-22-6100-000-48000	DUES & MEMBERSHIPS	3,700.00	2,953.00	747.00	79.81
0001-22-6110-000-10020	DEPUTIES/ASSTS/INVESTI/FOREMAN	42,640.00	42,315.72	324.28	99.24
0001-22-6110-000-10030	CLERKS	36,120.00	35,838.84	281.16	99.22
0001-22-6110-000-10050	CORR OFF/P RNGR/OFC MGR/CIV ATTY	80,040.00	79,143.34	896.66	98.88
0001-22-6110-000-10100	TEMPORARY & PART TIME	19,600.00	16,906.00	2,694.00	86.26
0001-22-6110-000-10200	LONGEVITY	1,800.00	1,800.00	0.00	100.00
0001-22-6110-000-20200	CHEMICALS & GASES/HERBICIDES	1,000.00	826.22	173.78	82.62
0001-22-6110-000-20300	FERTILIZER & SEED	1,000.00	550.00	450.00	55.00
0001-22-6110-000-20400	TREES & SHRUBS	500.00	135.00	365.00	27.00
0001-22-6110-000-21210	PARKS	8,000.00	7,099.60	900.40	88.75
0001-22-6110-000-21400	TRAFFIC & ST SIGN MATERIALS	2,000.00	5,675.20	-3,675.20	283.76
0001-22-6110-000-21910	PARKS	16,500.00	17,661.88	-1,161.88	107.04
0001-22-6110-000-23210	PARKS	3,000.00	4,302.92	-1,302.92	143.43
0001-22-6110-000-24000	NON-MV MACH & EQUIP HARDWARE/SUP	1,500.00	1,281.52	218.48	85.43
0001-22-6110-000-25000	FUELS	24,000.00	14,530.25	9,469.75	60.54
0001-22-6110-000-25100	LUBRICANTS	1,500.00	819.36	680.64	54.62
0001-22-6110-000-25400	MINOR MV PARTS & ACCESSORIES	500.00	66.56	433.44	13.31
0001-22-6110-000-29000	MINOR EQUIPMENT & HAND TOOLS	1,000.00	2,091.92	-1,091.92	209.19
0001-22-6110-000-29300	SAFETY & PROTECTIVE SUPPLIES	2,000.00	1,961.04	38.96	98.05
0001-22-6110-000-29302	LAW ENFORCEMENT SUPPLIES	1,500.00	1,008.17	491.83	67.21
0001-22-6110-000-42212	LAW ENFORCEMENT SCH INST	500.00	130.00	370.00	26.00
0001-22-6110-000-43000	NATURAL & LP GAS	2,500.00	1,052.24	1,447.76	42.09
0001-22-6110-000-43110	PARKS	18,000.00	16,331.34	1,668.66	90.73
0001-22-6110-000-43200	WATER USE	3,700.00	3,596.27	103.73	97.20
0001-22-6110-000-44000	MOTOR VEH EQUIP REPAIR/MAINT	2,800.00	6,364.31	-3,564.31	227.30
0001-22-6110-000-44110	PARKS	5,000.00	7,931.33	-2,931.33	158.63
0001-22-6110-000-44300	OPER & CONSTR EQUIP REPAIR/MAINT	4,000.00	5,514.56	-1,514.56	137.86
0001-22-6110-000-44711	LAW ENFORCEMENT EQUIPMENT	1,000.00	937.81	62.19	93.78
0001-22-6110-000-48320	CONTRACT MOWING	22,000.00	25,500.71	-3,500.71	115.91
0001-22-6120-000-10070	NATURALIST/PARK TECH/RD BIOLOGIS	35,260.00	34,991.80	268.20	99.24
0001-22-6120-000-10090	OTHER/LT	32,800.00	32,333.77	466.23	98.58
0001-22-6120-000-10100	TEMPORARY & PART TIME	4,400.00	3,726.00	674.00	84.68
0001-22-6120-000-29200	RECREATIONAL SUPPLIES	1,000.00	1,123.66	-123.66	112.37
0001-22-6120-000-29520	DEVELOPMENT/MATERIALS	1,000.00	817.25	182.75	81.73
0001-22-6120-000-29700	EE PROGRAM SUPPLIES	1,200.00	1,480.10	-280.10	123.34
0001-22-6120-000-40220	BROCHURES/PAMPHLETS	2,000.00	876.00	1,124.00	43.80
0001-22-6120-000-40600	NEWSLETTERS	1,200.00	695.50	504.50	57.96
0001-22-6120-000-42940	MARKETING SERVICES	4,000.00	4,534.59	-534.59	113.36
0001-22-6120-000-63830	EE EQUIPMENT	1,000.00	873.83	126.17	87.38
<b>Grand Total</b>		<b>\$522,520.00</b>	<b>\$515,964.44</b>	<b>\$6,555.56</b>	<b>98.75</b>



### General Supplemental

Account Number	Adjusted Appropriation	Expenditures	Balance	Prct Used
0002-22-6100-000-11000 FICA	7,463.00	7,425.26	37.74	99.49
0002-22-6100-000-11100 IPERS	8,712.00	8,813.94	-101.94	101.17
0002-22-6100-000-11300 GROUP INSURANCE	36,024.00	36,249.79	-225.79	100.63
0002-22-6110-000-11000 FICA	13,648.00	13,364.95	283.05	97.93
0002-22-6110-000-11100 IPERS	14,909.00	14,943.91	-34.91	100.23
0002-22-6110-000-11300 GROUP INSURANCE	61,004.00	59,750.14	1,253.86	97.94
0002-22-6120-000-11000 FICA	5,571.00	5,404.81	166.19	97.02
0002-22-6120-000-11100 IPERS	6,110.00	6,676.58	-566.58	109.27
0002-22-6120-000-11300 GROUP INSURANCE	36,024.00	36,255.58	-231.58	100.64
<b>Grand Total</b>	<b>\$189,465.00</b>	<b>\$188,884.96</b>	<b>\$580.04</b>	<b>99.69</b>

### Conservation Reserve

Account Number	Adjusted Appropriation	Expenditures	Balance	Prct Used
0027-22-0210-000-60110 PARK AREA	\$25,000.00	\$24,911.13	\$88.87	99.64
<b>Grand Total</b>	<b>\$25,000.00</b>	<b>\$24,911.13</b>	<b>\$88.87</b>	<b>99.64</b>

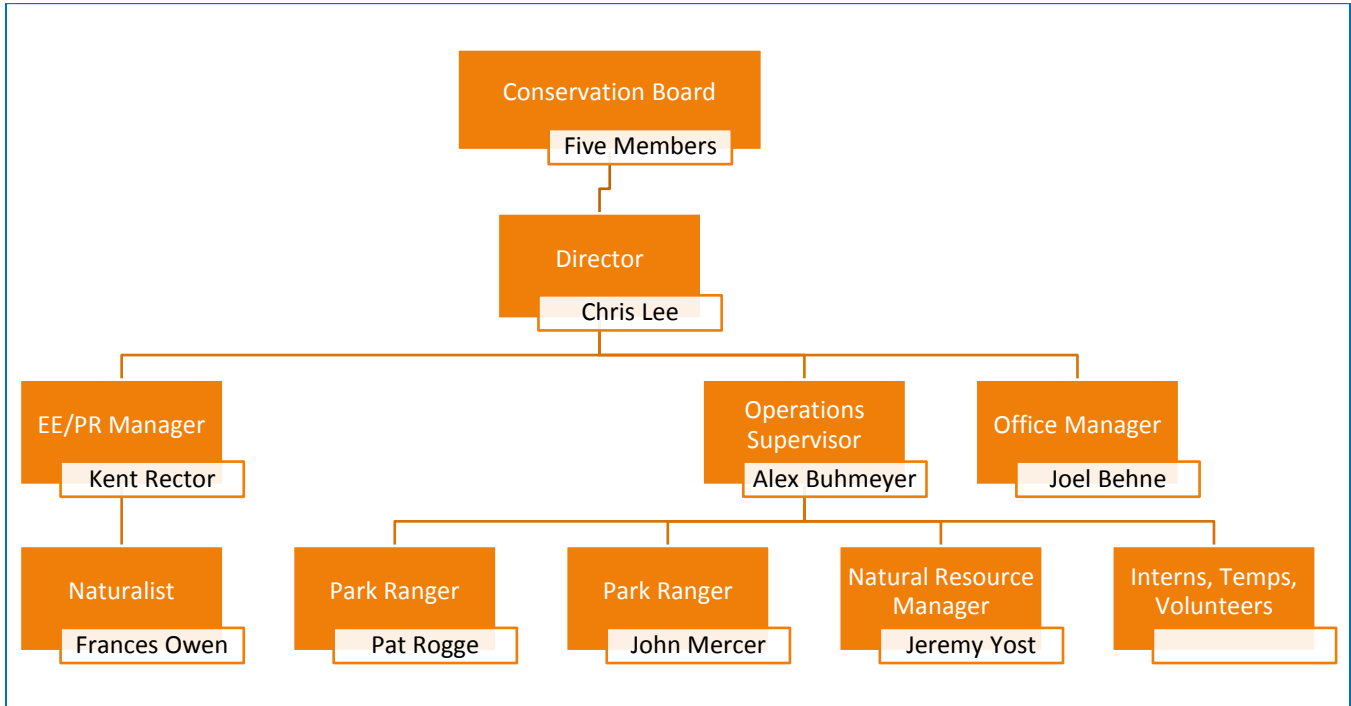
### GO Bond

Account Number	Adjusted Appropriation	Expenditures	Balance	Prct Used
0017-22-0220-000-61020	\$8,692.00	\$8,828.33	-\$136.33	101.57
<b>Grand Total</b>	<b>\$8,692.00</b>	<b>\$8,828.33</b>	<b>-\$136.33</b>	<b>101.57</b>
Total 2016 Expenditures	\$745,677	\$738,588.86	\$7,088.14	99.05

### Financial Summary

This year, Des Moines County Conservation spent a total of \$738,588.86 from all accounts and a total of \$94,427.71 in revenues was received from all sources. Expenditure balances in all accounts ended the year within two percent of the total adjusted appropriation in each fund category.

## Organizational Chart





## Employee Directory

Position	Employee	Work Address	Phone(s)
<b>Director</b>	Chris Lee	<b>Main Office</b> 13700 Washington Rd. West Burlington, IA 52655 leec@dmcounty.com	(319) 753-8260 (319) 572-1564
<b>Office Manager</b>	Joel Behne	<b>Main Office</b> 13700 Washington Rd. West Burlington, IA 52655 dmconbd@dmcounty.com	(319) 753-8260
<b>Operations Supervisor</b>	Alex Buhmeyer	<b>Maintenance Shops</b> 18836 Ranger Ln. Sperry, IA 52650 buhmeyera@dmcounty.com	(319) 985-2502
<b>Park Ranger</b>	Pat Rogge	<b>Maintenance Shops</b> 18836 Ranger Ln. Sperry, IA 52650 roggep@dmcounty.com	(319) 985-2502 (319) 759-4779
<b>Park Ranger</b>	John Mercer	<b>Maintenance Shops</b> 18836 Ranger Ln. Sperry, IA 52650 mercerv@dmcounty.com	(319) 985-2502 (319) 572-5445
<b>Natural Resource Manager</b>	Jeremy Yost	<b>Maintenance Shops</b> 18836 Ranger Ln. Sperry, IA 52650 yostj@dmcounty.com	(319) 985-2502 (319) 572-6865
<b>Environmental Education/Public Relations Coordinator</b>	Kent Rector	<b>Starr's Cave Nature Center</b> 11627 Starr's Cave Rd. Burlington, IA 52601 rectork@dmcounty.com	(319) 753-5808 (319) 768-8057
<b>Naturalist</b>	Frances Owen	<b>Starr's Cave Nature Center</b> 11627 Starr's Cave Rd. Burlington, IA 52601 owenf@dmcounty.com	(319) 753-5808

## Board Member Directory

Position	Name	Term Expires
<b>Chair</b>	James Garnjobst	12/31/2016
<b>Vice-Chair</b>	LaVon L. Worley	12/31/2017
<b>Secretary/Treasurer</b>	Angela Vaughan	12/31/2020
<b>Member</b>	Cathy Ziglar	12/31/2019
<b>Member</b>	James E. Steer	12/31/2018

## Conservation Board Meetings

- July 1, 2015
- August 5, 2015
- August 19, 2015\*
- September 2, 2015
- September 30, 2015\*
- October 7, 2015
- November 4, 2015
- November 16, 2015\*
- December 2, 2015
- December 14, 2015\*
- January 6, 2016
- February 3, 2016
- March 2, 2016
- March 28, 2016\*
- April 4, 2016
- April 5, 2016\*
- April 6, 2016\*
- May 4, 2016
- June 1, 2016

\*Indicates special meetings or work sessions outside of normal monthly meetings.