

# Des Moines County Conservation FY 2017-2018 Annual Report

July 1, 2017 to June 30, 2018



**Chris Lee, Executive Director  
Des Moines County Conservation  
13700 Washington Rd.  
West Burlington, IA 52655  
(319) 753-8260  
[www.dmccconservation.com](http://www.dmccconservation.com)  
Published: August 2018**

*Des Moines County Conservation is dedicated to the sustainability of natural resources through land stewardship, conservation education, and by providing quality outdoor recreation opportunities.*



## New and Noteworthy

Here are a few of the highlights from the past year:

### Harold and Mildred Linder Conservation Area

In November, we cut the ribbon on 105 acres of public land open to hunting, fishing, and nature hiking. The Harold and Mildred Linder Conservation Area is a mile west of Highway 61 on the south side of 170th St. between Burlington and Sperry. The land was partially donated to the county by the Linder family with the remainder of the purchase (\$250,000) made possible by a Resource Enhancement and Protection (REAP) grant.

The property is maintained as a conservation area so its primary purpose is wildlife habitat and natural resources. Activities such as hunting, hiking, and wildlife viewing are allowed on the property as per state laws pertaining to public wildlife areas. Portions of the property are still farmed through a local tenant agreement.

### Starr's Cave and Hickory Bend Expansion

We are currently in the process of completing acquisitions for the expansion of both Starr's Cave Park and Preserve and Hickory Bend Conservation Area. The Starr's Cave expansion consists of about 13 acres on the west side of the Preserve previously owned by Norm Pilgram of R&R Development and Norm's Koestner Electric. Knowing we were interested in acquiring the property both for the Flint River Trail project and to protect more of Flint Creek as well as to square the Preserve property off to the highway, Mr. Pilgram agreed to sell the property to us. The purchase was made possible by funding provided by the Iowa Natural Heritage Foundation. The acquisition was complete in June and Starr's Cave's property boundaries will be officially amended and the property opened to the public once the construction of the Flint River Trail there is complete this coming fall. The same rules governing Starr's Cave Park and Preserve will apply to this new property.

The Hickory Bend Conservation Area expansion is roughly 65 acres on the east side of the existing conservation area. The area was purchased by the Iowa Department of Transportation as a mitigation site and will be handed over to Des Moines County Conservation once the mitigation work is complete. The forests, wetlands, and streams that are being affected by the Highway 61 four lane project north of Burlington are being replaced on this site. What was once farm fields along Flint Creek next to Hickory Bend have now been planted to trees. Additionally, contractors constructed shallow wetland basins and improved some of the tributary creek banks. Once complete, the property will expand the boundaries of Hickory Bend and be open to public hunting like the rest of the conservation area.

### Flint River Trail Construction Has Begun at Starr's Cave

Contractors have started working on the Flint River Trail within Starr's Cave Park and Preserve. Once complete, this over-one-mile segment of trail through the Preserve will connect Flint Bottom Road at Highway 61 to Irish Ridge Road. The portion of trail along the creek nearest the highway will be concrete while the portion through the middle of the Preserve proper will be lime surfaced like most of the rest of the county portion of the trail. Except for the portion that crosses Flint Creek and Highway 61, which will be completed with the new four-lane highway, the rest of the work is expected to be complete before the end of the year.

## Big Hollow Campground Improvements Complete ... Almost

This summer marks the final completion of the major improvements to the campground at Big Hollow Recreation Area. Over the past year or more, we've installed water and sewer infrastructure and added full hookups to every RV campsite along with a dump station and shower house. This summer we've been putting on the finishing touches by adding a new registration station, better landscaping and dust control, among other things. Add to that the new lake access roads and parking areas just below the campground we finished last fall and we're about to call the project complete.

Well, maybe not.

Actually there's one more big thing we hope to add to the park yet in 2018: a playground.

On account of the growing demand and number of donations we've received for a playground structure at the Big Hollow campground, we are moving forward with such a project. The nature-inspired structure we have designed incorporates towers and bridges and slides and climbing features, mostly all made from natural materials. Once we hit our fundraising goals – the whole thing will cost over \$40,000 – we'll have the company, Bears Playgrounds, come install it. We're already almost half the way to our goal thanks to generous donations so far from Optimists of Burlington/West Burlington, USG Foundation, Burlington Kiwanis and others. And if we get the Wellmark Grant we've applied for and/or if we continue getting local donations like we have been, we'll be able to trigger the project immediately.

If all goes as we think it will, we hope to have the structure installed before fall. If you would like to contribute to the project, you can make a donation online, or contact our office for a donation form.



## Starr's Cave Nature Center Gets a Facelift

For the past four years, we've been incrementally improving and updating Starr's Cave Nature Center and this year those major renovations were completed. We started in 2014 by repairing and repainting the old barn's exterior. Then we completely renovated the bottom floor over a couple year period. Once that was complete, we moved up to the second floor. We tore out walls and flooring, installed insulation, new windows and doors, new lights and new floors. We designed and installed new displays to go along with the new curriculum we created that incorporates modern education standards such as STEM (Science, Technology, Engineering, and Mathematics) and NGSS (Next Generation Science Standards).

Today, the second floor would be nearly unrecognizable were it not for the fact that we kept the beaver pond exhibit. The old staff office is gone, replaced by a Kids' Corner, live animal displays, and a wall of books. The lighting is better and the new displays are eye catching and full of interesting information. We even have an "augmented reality" sandbox.

You have to see it to fully appreciate how cool it is!

All of these improvements were made possible by a grant from the Harry and Virginia Murray Foundation, a Resource Enhancement and Protection Conservation Education Program (REAP CEP) grant, and the hard work and dedication of a bunch of volunteers led by longtime volunteer Kevin Moore of Moore's Professional Carpentry.



# Outdoor Recreation

*If you build it, they will come.*

This old adage proved abundantly true at Big Hollow Recreation Area this year. We invested roughly \$600,000 in upgrades to the RV campground by installing sewer and water infrastructure making all 32 sites full hookup. Additionally, we added a dump station, a shower house, better lake access nearby and some other improvements. In response, park visitation soared. The number of nights stayed increased by 11% and revenues roughly doubled.

We built it. They came. No doubt about that.

As part of that momentum, a number of donations came our way for the often-requested playground at Big Hollow. With a grant request pending and other donations expected, we anticipate construction to begin on the nature-inspired playground in late summer of 2018.

But that wasn't all we accomplished on the Outdoor Recreation front this past year. We also added some new public acres with the addition of the 105 acre Harold and Mildred Linder Conservation Area, made possible by a donation by the Linder Family and a REAP grant. We also saw the 65 acre expansion of Hickory Bend, a DOT mitigation project, and a 13 acre addition to Starr's Cave Park and Preserve that brought the property out to Highway 61.

That purchase was made possible by a grant from the Iowa Natural Heritage Foundation.

No tax dollars were used for any of those land purchases.

Improvements to existing areas this year included the rebuilding and restocking of the pond at Leopold Recreation Area, the start of the Flint River Trail corridor through Starr's Cave Park and Preserve, and the planting of thousands of trees and the construction of wetland basins on the Hickory Bend expansion area, a mitigation project by the Department of Transportation in relation to the Highway 61 four-lane construction.

Park Usage By Year - Number of People Camping					
Campground	FY13/14	FY14/15	FY15/16	FY16/17	FY17/18
Sycamore Loop	669	768	866	1099	583
Maple Loop	231	238	395	349	259
4 <sup>th</sup> Pumping Station	714	813	1,027	1,105	956
Big Hollow**	1,759	2,000	2,263	2,963	3,386
Totals	3,373	3,819	4,551	5,516	5,184

\*\*Includes the off-grid cabin

12% INCREASE IN  
NUMBER OF  
BIG HOLLOW CAMPERS

11% INCREASE IN  
NUMBER OF  
CAMPING NIGHTS

BIG HOLLOW  
SHOWER HOUSE COMPLETED

# Outdoor Recreation

Fiscal Year 2017-2018 Des Moines County Conservation Annual Report

Financially, things were tight this year from an operational perspective but the many grants we've received and the ability to capture revenue from the parks we're actively developing has kept things progressing. Some of the notable grants that were expended this year include:

- \$250,000 Resource Enhancement and Protection (REAP) grant for the partial purchase of the Harold and Mildred Linder Conservation Area. The remainder of the land's value was donated by the family.
- \$150,000 Land and Water Conservation Fund grant for the campground development at Big Hollow.
- \$34,993.07 from Partners for Conservation Foundation for the campground development at Big Hollow.

Trails	
Park / Area	Miles of off-road Trails
Big Hollow	10.3
Flint River Trail	6.2
Hunt Woods	2.3
Luckenbill Woods	2.2
North Gorge Trail	1.5
Starr's Cave	2.2
Total: 24.7 miles	

Range Membership				
FY	Life Members	Family	Single	Total Paid
FY11/12	2	208	332	725
FY12/13	2	299	410	885
FY13/14	2	375	242	799
FY14/15	2	436	378	816
FY15/16	3	421	400	824
FY16/17	3	418	513	931
FY17/18	3	486	392	881

Shooting Range Use By Month													
	Jul	Aug	Sept	Oct	Nov	Dec	Jan	Feb	Mar	Apr	May	Jun	Total
FY11/12	212	303	419	371	324	304	195	197	390	480	383	394	3,972
FY12/13	323	361	489	236	282	209	180	148	197	247	209	358	3,239
FY13/14	372	423	367	296	213	216	109	34	253	289	287	286	3,145
FY14/15	349	354	330	261	238	235	148	68	282	249	310	274	3,098
FY15/16	382	354	350	289	204	271	179	181	293	277	287	358	3,425
FY16/17	336	293	365	350	342	226	159	209	317	288	409	380	3,674
FY17/18	372	317	350	331	370	147	138	154	293	269	311	285	3,337
Average	335	344	381	305	282	230	158	142	289	300	314	334	3,413



# Parks & Trails

Fiscal Year 2017-2018 Des Moines County Conservation Annual Report

## Big Hollow Recreation Area

18853 152nd Ave, Sperry  
798 acres



## Leopold Recreation Area

11816 Mill Dam Rd, Burlington  
235 Acres



## Starr's Cave Nature Center & Preserve

11627 Starr's Cave Rd, Burlington  
184 acres



## Hickory Bend Conservation Area

16256 155th Ave, Sperry  
240 acres



## Welter Recreation Area

16839 Skunk River Rd, Burlington  
79 acres



## Luckenbill Woods

8795 Hawkeye Rd, Mediapolis  
76 acres



## Hunt Woods

12412 65th St, Burlington  
58 acres



## Kevin J Gahn Memorial Recreation Area

13724 Washington Rd, Burlington  
56 acres, Public access is limited



## FEMA Buyout Properties

57 Parcels, No public Access  
102 acres

## Sullivan Slough River Access

3175 Sullivan Slough Rd, Burlington  
22 acres



## 4th Pumping Plant Recreation Area

2073 Pumping Station Rd, Oakville  
17 acres



## Chautauqua Roadside Park

10530 Mediapolis Rd, Mediapolis  
10 acres



## Hawkeye Dolbee River Access

4629 Lake Rd, Oakville  
10 acres



## Tama Beach River Access

13518 Tama Rd, Burlington  
3 acres



## Casey Barrow River Access

1867 180th St, Burlington  
2 acres



## Waters Roadside Park

19364 Roosevelt St, Danville  
2 acres



## Edgewater Beach River Access

13290 Tama Rd, Burlington  
1 acre



## Zion School

16495 155th Ave, Sperry  
1 acre



## Hoover Trail

End of Y Camp Rd, Burlington  
30 acres



## North Gorge Trail

9668 Golf Course Rd, Burlington  
36 acres



## Harold and Mildred Linder Conservation Area

3807 170th St, Sperry  
105 acres



## Legend

- Camping
- Hunting
- Mississippi River Access
- Swimming
- Boat Access
- Picnic Area
- Shelter Houses
- Dump Station
- Restrooms
- Fishing
- Hiking
- Bike Trails
- Electrical Hook-Ups
- Water



# Land Stewardship

Fiscal Year 2017-2018 Des Moines County Conservation Annual Report

## LAND STEWARDSHIP

Des Moines County Conservation applies sound land stewardship efforts on both public and private land throughout the county. From contracted planting services to landowner technical assistance, DMCC's land stewardship efforts are broad and diverse. Here are highlights of DMCC's land stewardship efforts in fiscal year 2017-2018.

## Private Land

- 150 Landowner Contacts
- Planted 550.66 acres on 27 private lands projects
- Planted 15 acres of food plots and gave out 100 acres of free food plot seed
- 10 prescribed burns totaling 100 acres on private land
- Spade, ball and burlap and transport 100 oak and evergreen trees

## Public Land

- Conducted 300 acres of prescribed burns
- Planted 75 acres of prairie on public land
- Planted 20 acres of food plots
- Performed 15 acres of Timber Stand Improvement (TSI)

## Projects

Cut 10 acres worth of overgrown cedars and placed them in wildlife friendly piles. We then partnered with a local landowner to utilize "mob" cattle grazing techniques on 12 acres at Hickory Bend Recreation Area. The combination of wildlife friendly brush piles and the rest periods associated with mob grazing have resulted in the area being utilized by bobwhite quail and many other species this spring. Additional plans for the area include TSI, cool season grass conversion to native grass and wildflower mix, prescribed burning, and maintaining food plots.



Prescribed Burn in the prairie at the main office

35% INCREASE  
IN PRIVATE  
LANDOWNER CONTACTS

660.66  
ACRES PLANTED

400 TOTAL ACRES OF  
PRESCRIBED BURNS

## ENVIRONMENTAL/CONSERVATION EDUCATION PROGRAM

### Activities of the EE Program Staff

JULY 2017 – JUNE 2018

#### Programs, Events and Services

Starr's Cave Nature Center has seen dramatic changes in nearly every aspect of its operations and programming this year. With funding from the Burlington Kiwanis group we were able to fund a summer naturalist position and offer new offsite camps for area teens. These camps focused on outdoor skills and targeted an age group that had previously been underserved. We also spent a lot of time developing and teaching new classroom and field trip programs. These programs were developed as part of our REAP CEP grant. We presented the new curriculum in nearly every second and fourth grade classroom in the county.

We also designed and installed new interpretive exhibits in the nature center. Exhibits were designed to complement our classroom programs regarding water quality and pollinators. Each exhibit incorporates interactive components including an augmented reality sandbox. We reorganized and updated our classroom program guide and added Next Generation Science Standards to all of our curriculum. We increased our citizen science programming, and we hosted our first bus tour!

We also continue to offer several annual Environmental Education opportunities and services to the public. Our annual programs include an owl prowl, eagle watch, parent-tot classes, science expo, critter catch, nature at night, open climbing wall days, cross country ski rentals, youth ice fishing clinics, the Youth Jamboree, summer day camps and Paddle in the Park events. The Nature Center is available to the general public for rental; we also open the facilities to local civic groups for monthly meetings and classes.

#### SCNC Renovations

All major construction projects have been completed at Starr's Cave Nature Center including development and installation of new exhibits.

Starr's Cave Nature Center Visitation							
Type of visitation	FY 11-12	FY 12-13	FY 13-14	FY 14-15	FY 15-16	FY16-17	FY17-18
Attending a Program	3,580	3,252	5,706	6,116	5,116	5,000	6,298
Renting the Building	1,635	1,465	1,850	2,263	2,000	2,000	2,500
Casual Visitation	2,315	2,532	3,067	5,263	4,263	9,595	15,388
<b>Totals</b>	<b>7,530</b>	<b>7,249</b>	<b>10,623</b>	<b>13,642</b>	<b>11,379</b>	<b>16,595</b>	<b>24,186</b>



# Conservation Education

Fiscal Year 2017-2018 Des Moines County Conservation Annual Report

## Program Numbers

This year we provided 210 educational programs throughout the Fiscal Year to 8798 participants. Any decrease in program and participation numbers can be attributed to staff time spent developing CEP exhibits, programs, and materials. Classroom time was also reserved for presenting REAP CEP specific programs. The EE highlight this last year is completing 2nd floor renovations and exhibits, and receiving an award for best interpretive print media from the Iowa Association of Naturalists for our water quality critter cards.



Program at Starr's Cave Nature Center

### Environmental Education Programs and Attendance - FY 2017/18

		July	Aug	Sept	Oct	Nov	Dec	Jan	Feb	Mar	Apr	May	Jun	Total
Pre - K	Programs				4	3	7	4	3	2	2	6		33
	Participants				98	138	284	139	119	64	90	36	210	1178
1 <sup>st</sup> - 2 <sup>nd</sup>	Programs				6	4	2	2	5		4	3	7	33
	Participants				407	272	116	117	310		291	173	380	2066
3 <sup>rd</sup> - 5 <sup>th</sup>	Programs				1	1	3	1		2		2	5	15
	Participants				72	72	204	72		100		132	255	907
6 <sup>th</sup> - 8 <sup>th</sup>	Programs					1							1	2
	Participants					60							150	210
9 <sup>th</sup> - 12 <sup>th</sup>	Programs					1						2		3
	Participants					175						16		191
Home School	Programs				2		1			1		1	1	6
	Participants				55		25			30		19	25	154
Care Centers	Programs			2	2	1	1		1			1		8
	Participants			42	53	30	20		30			8		183
Youth Groups	Programs			1	4	6	2	4	1	2	1	9	3	33
	Participants			30	61	124	46	110	20	40	8	200	32	671
Civic Groups	Programs									1				1
	Participants									20				20
Public	Programs		2	4	2	3	1	1	2	3		4	3	26
	Participants		92	165	80	155	70	10	135	420		600	580	2339
Professional	Programs			1								1		2
	Participants			300								30		330
Hunter/Ranger	Programs													0
	Participants													0
Camps	Programs		28	15										43
	Participants		330	159										489
Volunteer	Programs													0
	Participants													0
TOTAL	Programs		30	23	21	20	17	12	12	11	7	25	26	210
	Participants		422	696	826	1,026	765	448	614	674	389	1,214	1,632	8,798





Top Left: Memorial rock at Harold and Mildred Linder Conservation Area  
Top Right: Sunset over 4th Pumping Plant Recreation Area



Top Left: Dragon Boats at Big Hollow  
Top Right: Discovery Camp  
Lower Left: Critter Catch  
Lower Right: Memorial bench at Big Hollow





# Financial Statement

Fiscal Year 2017-2018 Des Moines County Conservation Annual Report

## General Basic Fund Revenues

Account	Revenues
0001-1-22-6110-412000 BOAT TITLES	\$1,410.00
0001-1-22-6110-520031 CAMP FEES-AREA 1 LOWER AUGUSTA	\$7,127.85
0001-1-22-6110-520037 CAMP FEES-WELTER REC PARK	\$1,173.00
0001-1-22-6110-520039 CAMP FEES-4TH PUMPING PLANT REC	\$13,206.00
0001-1-22-6110-523045 REC FACILITY RENT-STARR'S CAVE N	\$620.00
0001-1-22-6110-523047 REC FACILITY RENT-SHELTERS	\$55.00
0001-3-22-6110-265600 LAND & WATER CONS FUND GRANT	\$150,000.00
0023-2-22-6110-265100 REAP GRANTS	\$250,000.00
0001-4-22-6110-848065 MISC REIMB-REFUNDS	\$524.58
<b>Total - General Basic Revenues</b>	<b>\$424,116.43</b>

## REAP Fund

Account	Revenues
0023-2-22-6110-846067 REAP GRANTS-CONTR-EQUAL SHARE	\$7,296.00
0023-2-22-6110-846067 REAP GRANTS-PER CAPITA	\$9,673.00
0023-4-22-6110-600000 INTEREST ON INVESTMENTS	\$13.89
<b>Total - REAP</b>	<b>\$16,982.89</b>

## Conservation Reserve Fund

Account	Revenues
0027-1-22-6110-441021 SHOOTING RANGE CERT-NEW	\$5,295.00
0027-1-22-6110-441022 SHOOTING RANGE CERT-RENEWALS	\$18,620.00
0027-1-22-6110-520000 CABIN RENTALS	\$2,650.00
0027-1-22-6110-520038 CAMP FEES-BIG HOLLOW CREEK	\$53,234.36
0027-1-22-6110-520041 CAMP FEES-MISC RELATED TO CAMP	\$45.00
0027-1-22-6110-523044 REC FACILITY RENT-SHOOTING RANGE	\$120.00
0027-1-22-6110-523047 REC FACILITY RENT-SHELTERS	\$470.00
0027-1-22-6110-839062 SALE OF COMM-TIMBER	\$16,185.50
0027-1-22-6110-847000 MISCELLANEOUS REIMB	\$50.00
0027-1-22-6110-847064 MISC REIMB-PLANTING SERVICES	\$33,535.70
0027-1-22-6120-529000 PROGRAM FEES	\$12,880.93
0027-1-22-6120-810000 DONATION	\$63,665.49
0027-3-22-6110-265500 FISH HABITAT COST SHARE GRANT	\$19,206.00
0027-3-22-6110-265900 WILDLIFE DIVERSITY GRANT	\$4,710.00
<b>Total -</b>	<b>\$230,667.98</b>

## General Basic

Account	Adjusted Appropriation	Expenditures	% Used	Balance
0001-22-0210-000-42360 CONSULTATIONS & SURVEYS	5,000.00	1,885.00	38	3,115.00
0001-22-6100-000-10010 ADMINISTRATORS/EXEC DIRECTOR	58,883.00	58,882.98	100	.02
0001-22-6100-000-10050 CORR OFF/P RNGR/OFC MGR/CIV ATTY	35,965.00	35,965.19	100	-.19
0001-22-6100-000-10200 LONGEVITY	2,240.00	2,240.00	100	0.00
0001-22-6100-000-12600 CONSERVATION BOARD	500.00	307.05	61	192.95
0001-22-6100-000-26000 OFFICE SUPPLIES	2,000.00	1,892.88	95	107.12
0001-22-6100-000-26100 MAGAZINES/PERIODICALS & BOOKS	800.00	237.00	30	563.00
0001-22-6100-000-26200 DATA PROCESSING SUPPLIES	2,500.00	3,212.22	128	-712.22
0001-22-6100-000-29400 WEARING APPAREL & UNIFORMS	2,400.00	2,025.98	84	374.02
0001-22-6100-000-40000 OFC PUBLICATIONS & LEGAL NOTICES	600.00	171.55	29	428.45
0001-22-6100-000-40200 TYPE PRINT & BIND SERVICES	500.00	587.47	117	-87.47
0001-22-6100-000-41200 POSTAGE & MAILING	500.00	447.25	89	52.75
0001-22-6100-000-41400 TELECOMMUNICATIONS SRVS	7,000.00	8,256.57	118	-1,256.57
0001-22-6100-000-42210 SCHOOL OF INSTRUCTION	5,000.00	5,141.96	103	-141.96
0001-22-6100-000-44400 OFC & DATA P EQUIP REPR/MAINT	2,000.00	508.00	25	1,492.00
0001-22-6100-000-48000 DUES & MEMBERSHIPS	3,700.00	2,918.99	79	781.01
0001-22-6110-000-10030 NATURAL RESOURCE MANAGER	40,461.00	40,893.65	101	-432.65
0001-22-6110-000-10050 CORR OFF/P RNGR/CIV ATTY	89,454.00	89,946.60	101	-492.60
0001-22-6110-000-10070 PARK TECHNICIANS	36,865.00	37,298.13	101	-433.13
0001-22-6110-000-10100 TEMPORARY & PART TIME	20,816.00	17,101.75	82	3,714.25
0001-22-6110-000-10200 LONGEVITY	4,680.00	4,680.00	100	0.00
0001-22-6110-000-20200 CHEMICALS & GASES/HERBICIDES	1,000.00	1,130.10	113	-130.10
0001-22-6110-000-20300 FERTILIZER & SEED	1,000.00	587.98	59	412.02
0001-22-6110-000-20400 TREES & SHRUBS	500.00	0.00	0.00	500.00
0001-22-6110-000-21210 PARKS - ROCK & SAND	8,000.00	7,403.64	93	596.36
0001-22-6110-000-21400 TRAFFIC & ST SIGN MATERIALS	2,000.00	3,835.83	192	-1,835.83
0001-22-6110-000-21910 PARKS - ALL OTHER EXPENSES	16,500.00	20,730.46	126	-4,230.46
0001-22-6110-000-23210 PARKS - CUSTODIAL	3,000.00	3,931.74	131	-931.74
0001-22-6110-000-24000 NON-MV MACH & EQUIP HARDWARE	1,500.00	1,117.53	75	382.47
0001-22-6110-000-25000 FUELS	18,000.00	16,080.37	89	1,919.63
0001-22-6110-000-25100 LUBRICANTS	1,500.00	798.28	53	701.72
0001-22-6110-000-25400 MINOR MV PARTS & ACCESSORIES	500.00	179.62	36	320.38
0001-22-6110-000-29000 MINOR EQUIPMENT & HAND TOOLS	1,000.00	1,773.74	177	-773.74
0001-22-6110-000-29300 SAFETY & PROTECTIVE SUPPLIES	2,000.00	1,617.18	81	382.82
0001-22-6110-000-29302 LAW ENFORCEMENT SUPPLIES	1,500.00	383.72	26	1,116.28
0001-22-6110-000-42212 LAW ENFORCEMENT SCHOOL OF INST	500.00	130.00	26	370.00
0001-22-6110-000-43000 NATURAL & LP GAS	3,000.00	5,386.36	180	-2,386.36
0001-22-6110-000-43110 PARKS - ELECTRICITY	18,000.00	19,105.42	106	-1,105.42
0001-22-6110-000-43200 WATER USE	3,700.00	3,955.01	107	-255.01
0001-22-6110-000-44000 MOTOR VEH EQUIP REPAIR/MAINT	6,000.00	10,447.28	174	-4,447.28



# Financial Statement

Fiscal Year 2017-2018 Des Moines County Conservation Annual Report

## General Basic - Continued

Account	Adjusted Appropriation	Expenditures	% Used	Balance
0001-22-6110-000-44110 PARKS - BUILDING REPAIRS	3,000.00	2,125.33	71	874.67
0001-22-6110-000-44300 OPER & CONSTR EQUIP REPAIR/MAINT	6,000.00	5,213.94	87	786.06
0001-22-6110-000-44711 LAW ENFORCEMENT EQUIPMENT	1,000.00	1,143.41	114	-143.41
0001-22-6110-000-48320 CONTRACT MOWING	26,350.00	19,655.01	75	6,684.99
0001-22-6110-000-63700 SHOP EQUIPMENT	0.00	579.00	-	-579.00
0001-22-6120-000-10070 NATURALIST/PARK TECH/RD BIOLGIS	40,461.00	40,689.18	101	-228.18
0001-22-6120-000-10090 OTHER/LT	36,802.00	34,604.64	94	2,197.36
0001-22-6120-000-10100 TEMPORARY & PART TIME	5,000.00	7,832.00	157	-2,832.00
0001-22-6120-000-10200 LONGEVITY	1,440.00	1,740.00	121	-300.00
0001-22-6120-000-29200 RECREATIONAL SUPPLIES	1,000.00	150.00	15	850.00
0001-22-6120-000-29520 DEVELOPMENT/MATERIALS	1,000.00	1,523.31	152	-523.31
0001-22-6120-000-29700 EE PROGRAM SUPPLIES	1,200.00	2,744.30	229	-1,544.30
0001-22-6120-000-40220 BROCHURES/PAMPHLETS	2,000.00	941.91	47	1,058.09
0001-22-6120-000-42940 MARKETING SERVICES	4,000.00	6,690.38	167	-2,690.38
0001-22-6120-000-63830 EE EQUIPMENT	1,000.00	1,290.57	129	-290.57
<b>Total - General Basic</b>	<b>541,317.00</b>	<b>540,127.46</b>	<b>99.78</b>	<b>1,189.54</b>

## General Supplemental

Account	Adjusted Appropriation	Expenditures	% Used	Balance
0002-22-6100-000-11000 FICA	7,256.00	7,366.64	101	-110.64
0002-22-6100-000-11100 IPERS	8,470.00	8,671.94	102	-201.94
0002-22-6100-000-11300 GROUP INSURANCE	39,127.00	39,317.61	101	-190.61
0002-22-6110-000-11000 FICA	14,564.00	14,357.45	99	206.55
0002-22-6110-000-11100 IPERS	15,707.00	16,434.01	103	-727.01
0002-22-6110-000-11300 GROUP INSURANCE	80,484.00	77,131.55	96	3,352.45
0002-22-6120-000-11000 FICA	6,400.00	6,629.78	101	-229.78
0002-22-6120-000-11100 IPERS	6,900.00	7,069.99	101	-169.99
0002-22-6120-000-11300 GROUP INSURANCE	39,127.00	35,861.74	92	3,265.26
<b>Total - General Supplemental</b>	<b>218,035.00</b>	<b>212,840.71</b>	<b>98</b>	<b>5,194.29</b>

## Conservation Reserve

Account	Adjusted Appropriation	Expenditures	% Used	Balance
0027-22-0220-000-61050 STARR'S CAVE NATURE CENTER	30,000.00	28,877.84	96	1,122.16
0027-22-0220-000-62810 BHCRA/PERM IMPROVEMENTS	550,000.00	548,238.36	99	1,761.64
0027-22-6110-000-21910 PARKS	3,000.00	1,002.75	33	1,997.25
0027-22-6110-000-21970 LEOPOLD REC AREA	25,000.00	24,710.10	98	289.90
0027-22-6110-000-63700 SHOP EQUIPMENT	3,000.00	2,680.18	89	319.82
0027-22-6120-000-10100 TEMPORARY & PART TIME	6,500.00	6,278.05	97	221.95
0027-22-6120-000-29700 EE PROGRAM SUPPLIES	17,200.00	15,435.05	90	1,764.95
<b>Total - Conservation Reserve</b>	<b>634,700.00</b>	<b>627,222.33</b>	<b>99</b>	<b>7,477.67</b>

# Employee Directory

Fiscal Year 2017-2018 Des Moines County Conservation Annual Report

## Employee Directory

Position	Employee	Work Address	Phone(s)
Director	Chris Lee	<b>Main Office</b> 13700 Washington Rd. West Burlington, IA 52655 leec@dmcounty.com	(319) 753-8260 (319) 572-1564
Administrative Assistant	Jeff Breuer	<b>Main Office</b> 13700 Washington Rd. West Burlington, IA 52655 breuerj@dmcounty.com	(319) 753-8260
Park Ranger	Pat Rogge	<b>Maintenance Shops</b> 18836 Ranger Ln. Sperry, IA 52650 roggep@dmcounty.com	(319) 985-2502 (319) 759-4779
Park Ranger	John Mercer	<b>Maintenance Shops</b> 18836 Ranger Ln. Sperry, IA 52650 mercerv@dmcounty.com	(319) 985-2502 (319) 572-5445
Natural Resource Manager	Open Position	<b>Maintenance Shops</b> 18836 Ranger Ln. Sperry, IA 52650	(319) 985-2502
Conservation Technician	Tanner Grimm	<b>Maintenance Shops</b> 18836 Ranger Ln. Sperry, IA 52650 grimmmt@dmcounty.com	(319) 985-2502 (319) 572-8057
Environmental Education/Public Relations Coordinator	Kent Rector	<b>Starr's Cave Nature Center</b> 11627 Starr's Cave Rd. Burlington, IA 52601 rectork@dmcounty.com	(319) 753-5808 (319) 768-8057
Naturalist	Kelly Rundell	<b>Starr's Cave Nature Center</b> 11627 Starr's Cave Rd. Burlington, IA 52601 rundellk@dmcounty.com	(319) 753-5808 (319) 572-0474



# Board Member Directory

Fiscal Year 2017-2018 Des Moines County Conservation Annual Report

## Board Member Directory

Position	Name	Term Expires
<b>Chair</b>	James E Steer	12/31/2018
<b>Vice-Chair</b>	Cathy Ziglar	12/30/2019
<b>Secretary/Treasurer</b>	James Garnjobst	12/31/2021
<b>Member</b>	Bob Hansen*	12/31/2022
<b>Member</b>	Julie Solinski**	12/31/2020

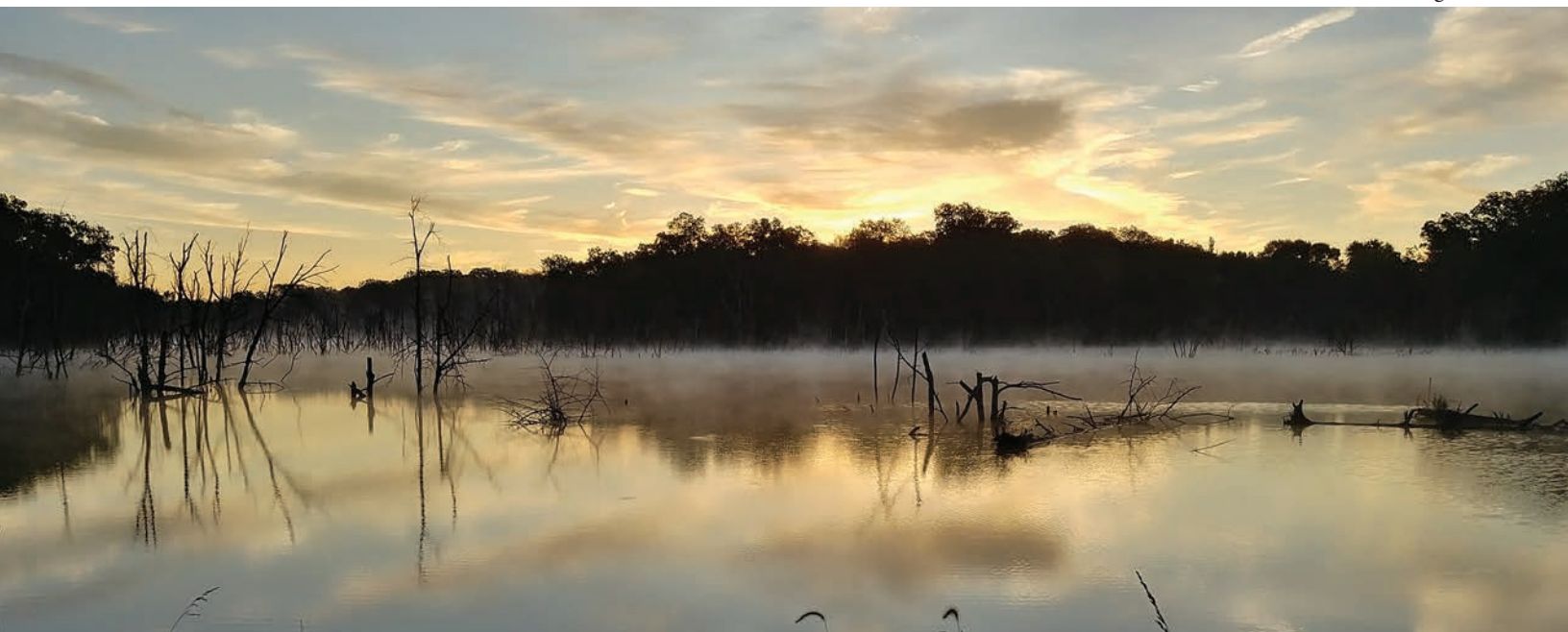
\*Replaced LaVon Worley in January (term expiration)

\*\*Replaced Angela Vaughn in April (resignation)

## Conservation Board Meetings

- July 5, 2017
- August 2, 2017
- September 6, 2017
- October 4, 2017
- November 1, 2017
- December 6, 2017
- January 3, 2018
- February 7, 2018
- March 7, 2018
- April 4, 2018
- May 2, 2018
- June 13, 2018

Big Hollow







## **Des Moines County Conservation**

### ***Mission Statement***

“Des Moines County Conservation is dedicated to the sustainability of natural resources through land stewardship, conservation education, and by providing quality outdoor recreation opportunities.”